


Product datasheet

Anti-Glucose Transporter GLUT4 antibody [mAbcam48547] ab48547

★★★★★ 3 Abreviews 7 References 1 Image

Overview

Product name	Anti-Glucose Transporter GLUT4 antibody [mAbcam48547]
Description	Mouse monoclonal [mAbcam48547] to Glucose Transporter GLUT4
Host species	Mouse
Tested applications	Suitable for: WB Unsuitable for: Flow Cyt (Intra)
Species reactivity	Reacts with: Mouse, Recombinant fragment Predicted to work with: Rat, Sheep, Rabbit, Goat, Horse, Cow 
Immunogen	Synthetic peptide corresponding to Human Glucose Transporter GLUT4 aa 450 to the C-terminus (C terminal) conjugated to keyhole limpet haemocyanin. (Peptide available as ab34088 , ab34089)
Positive control	WB: ab48547 gave a positive signal against the partial recombinant GLUT4 protein which has an expected molecular weight of 30 kDa.
General notes	<p>This antibody clone is manufactured by Abcam. If you require a custom buffer formulation or conjugation for your experiments, please contact orders@abcam.com.</p> <p>The Life Science industry has been in the grips of a reproducibility crisis for a number of years. Abcam is leading the way in addressing this with our range of recombinant monoclonal antibodies and knockout edited cell lines for gold-standard validation. Please check that this product meets your needs before purchasing.</p> <p>If you have any questions, special requirements or concerns, please send us an inquiry and/or contact our Support team ahead of purchase. Recommended alternatives for this product can be found below, along with publications, customer reviews and Q&As</p>

Properties

Form	Liquid
Storage instructions	Shipped at 4°C. Store at +4°C short term (1-2 weeks). Upon delivery aliquot. Store at -20°C or -80°C. Avoid freeze / thaw cycle.
Storage buffer	pH: 7.40 Preservative: 0.02% Sodium azide

	Constituent: PBS
Purity	Protein G purified
Clonality	Monoclonal
Clone number	mAbcam48547
Myeloma	Sp2/0
Isotype	IgG2b
Light chain type	kappa

Applications

The Abpromise guarantee Our **Abpromise guarantee** covers the use of ab48547 in the following tested applications. The application notes include recommended starting dilutions; optimal dilutions/concentrations should be determined by the end user.

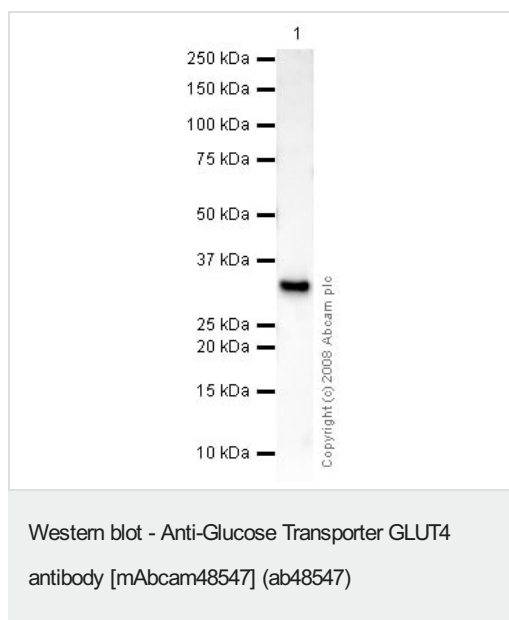
Application	Abreviews	Notes
WB		Use a concentration of 1 - 5 µg/ml. Detects a band of approximately 30 kDa (predicted molecular weight: 54 kDa).

Application notes Is unsuitable for Flow Cyt (Intra).

Target

Function	Insulin-regulated facilitative glucose transporter.
Tissue specificity	Skeletal and cardiac muscles; brown and white fat.
Involvement in disease	Diabetes mellitus, non-insulin-dependent
Sequence similarities	Belongs to the major facilitator superfamily. Sugar transporter (TC 2.A.1.1) family. Glucose transporter subfamily.
Post-translational modifications	Sumoylated.
Cellular localization	Cell membrane. Endomembrane system. Cytoplasm, perinuclear region. Localizes primarily to the perinuclear region, undergoing continued recycling to the plasma membrane where it is rapidly reinternalized. The dileucine internalization motif is critical for intracellular sequestration.

Images



Anti-Glucose Transporter GLUT4 antibody [mAbcam48547] (ab48547) at 5 µg/ml + Partial tagged recombinant protein to GLUT4 at 0.1 µg

Secondary

Rabbit polyclonal to Mouse IgG - H&L (HRP) at 1/3000 dilution

Performed under reducing conditions.

Predicted band size: 54 kDa

Observed band size: 30 kDa

ab48547 gave a positive signal against the partial recombinant GLUT4 protein which has an expected molecular weight of 30 kDa.

Please note: All products are "FOR RESEARCH USE ONLY. NOT FOR USE IN DIAGNOSTIC PROCEDURES"

Our Abpromise to you: Quality guaranteed and expert technical support

- Replacement or refund for products not performing as stated on the datasheet
- Valid for 12 months from date of delivery
- Response to your inquiry within 24 hours
- We provide support in Chinese, English, French, German, Japanese and Spanish
- Extensive multi-media technical resources to help you
- We investigate all quality concerns to ensure our products perform to the highest standards

If the product does not perform as described on this datasheet, we will offer a refund or replacement. For full details of the Abpromise, please visit <https://www.abcam.com/abpromise> or contact our technical team.

Terms and conditions

- Guarantee only valid for products bought direct from Abcam or one of our authorized distributors