

## Product datasheet

# Anti-GluK1 antibody ab67316

[1 References](#) [3 Images](#)

### Overview

<b>Product name</b>	Anti-GluK1 antibody
<b>Description</b>	Rabbit polyclonal to GluK1
<b>Host species</b>	Rabbit
<b>Tested applications</b>	<b>Suitable for:</b> ICC/IF, IHC-P, WB
<b>Species reactivity</b>	<b>Reacts with:</b> Mouse
<b>Immunogen</b>	Synthetic peptide corresponding to Human GluK1 (C terminal).
<b>Positive control</b>	P815 cells. Brain tissue.
<b>General notes</b>	<p>The Life Science industry has been in the grips of a reproducibility crisis for a number of years. Abcam is leading the way in addressing this with our range of recombinant monoclonal antibodies and knockout edited cell lines for gold-standard validation. Please check that this product meets your needs before purchasing.</p> <p>If you have any questions, special requirements or concerns, please send us an inquiry and/or contact our Support team ahead of purchase. Recommended alternatives for this product can be found below, along with publications, customer reviews and Q&amp;As</p>

### Properties

<b>Form</b>	Liquid
<b>Storage instructions</b>	Shipped at 4°C. Store at +4°C.
<b>Storage buffer</b>	pH: 7.2 Preservative: 0.02% Sodium azide Constituent: PBS
<b>Purity</b>	Immunogen affinity purified
<b>Clonality</b>	Polyclonal
<b>Isotype</b>	IgG

### Applications

**The Abpromise guarantee** Our **Abpromise guarantee** covers the use of ab67316 in the following tested applications. The application notes include recommended starting dilutions; optimal dilutions/concentrations should be determined by the end user.

Application	Abreviews	Notes
ICC/IF		Use a concentration of 20 µg/ml.
IHC-P		Use at an assay dependent concentration.
WB		Use a concentration of 0.5 - 2 µg/ml. Detects a band of approximately 104 kDa (predicted molecular weight: 104 kDa).

## Target

### Function

Ionotropic glutamate receptor. L-glutamate acts as an excitatory neurotransmitter at many synapses in the central nervous system. Binding of the excitatory neurotransmitter L-glutamate induces a conformation change, leading to the opening of the cation channel, and thereby converts the chemical signal to an electrical impulse. The receptor then desensitizes rapidly and enters a transient inactive state, characterized by the presence of bound agonist. May be involved in the transmission of light information from the retina to the hypothalamus.

### Tissue specificity

Most abundant in the cerebellum and the suprachiasmatic nuclei (SCN) of the hypothalamus.

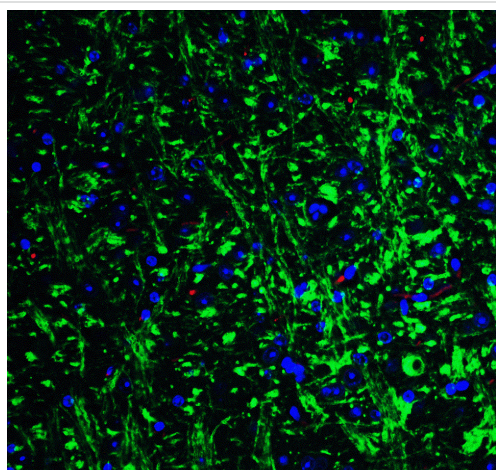
### Sequence similarities

Belongs to the glutamate-gated ion channel (TC 1.A.10.1) family. GRIK1 subfamily.

### Cellular localization

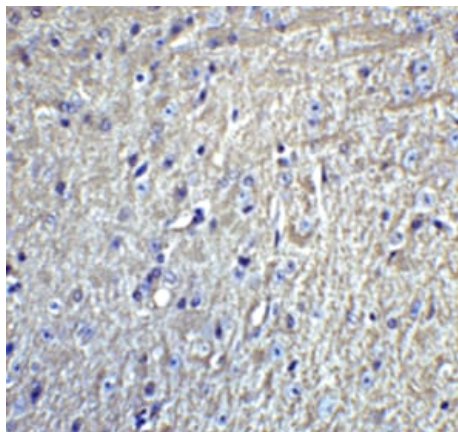
Cell membrane. Cell junction > synapse > postsynaptic cell membrane.

## Images



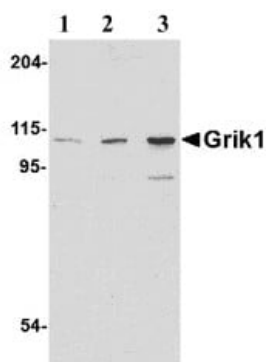
Immunofluorescence of GluK1 in Mouse Brain cells using ab67316 at 20 ug/ml.

Immunocytochemistry/ Immunofluorescence - Anti-GluK1 antibody (ab67316)



Immunohistochemistry (Formalin/PFA-fixed paraffin-embedded sections) - Anti-GluK1 antibody (ab67316)

Paraffin-embedded mouse brain tissue stained for GluK1 using ab67316 at 5 µg/ml in immunohistochemical analysis.



Western blot - Anti-GluK1 antibody (ab67316)

**Lane 1 :** Anti-GluK1 antibody (ab67316) at 0.5 µg/ml

**Lane 2 :** Anti-GluK1 antibody (ab67316) at 1 µg/ml

**Lane 3 :** Anti-GluK1 antibody (ab67316) at 2 µg/ml

**All lanes :** P815 cell lysate

Lysates/proteins at 15 µg per lane.

**Predicted band size:** 104 kDa

**Observed band size:** 104 kDa

**Additional bands at:** 95 kDa. We are unsure as to the identity of these extra bands.

**Please note:** All products are "FOR RESEARCH USE ONLY. NOT FOR USE IN DIAGNOSTIC PROCEDURES"

### Our Promise to you: Quality guaranteed and expert technical support

- Replacement or refund for products not performing as stated on the datasheet
- Valid for 12 months from date of delivery
- Response to your inquiry within 24 hours
- We provide support in Chinese, English, French, German, Japanese and Spanish

- Extensive multi-media technical resources to help you
- We investigate all quality concerns to ensure our products perform to the highest standards

If the product does not perform as described on this datasheet, we will offer a refund or replacement. For full details of the Abpromise, please visit <https://www.abcam.com/abpromise> or contact our technical team.

#### **Terms and conditions**

---

- Guarantee only valid for products bought direct from Abcam or one of our authorized distributors