


Product datasheet

Anti-GluN2D antibody ab92743

1 Image

Overview

| | |
|----------------------------|---|
| Product name | Anti-GluN2D antibody |
| Description | Rabbit polyclonal to GluN2D |
| Host species | Rabbit |
| Tested applications | Suitable for: WB |
| Species reactivity | Reacts with: African green monkey Predicted to work with: Mouse, Rat  |
| Immunogen | Synthetic peptide corresponding to Human GluN2D (internal sequence). Immunogen range = 671-720 Database link: O15399 |
| Positive control | COS7 cell lysate |
| General notes | <p>The Life Science industry has been in the grips of a reproducibility crisis for a number of years. Abcam is leading the way in addressing this with our range of recombinant monoclonal antibodies and knockout edited cell lines for gold-standard validation. Please check that this product meets your needs before purchasing.</p> <p>If you have any questions, special requirements or concerns, please send us an inquiry and/or contact our Support team ahead of purchase. Recommended alternatives for this product can be found below, along with publications, customer reviews and Q&As</p> |

Properties

| | |
|-----------------------------|---|
| Form | Liquid |
| Storage instructions | Shipped at 4°C. Upon delivery aliquot and store at -20°C. Avoid repeated freeze / thaw cycles. |
| Storage buffer | pH: 7.40 Preservative: 0.02% Sodium azide Constituents: PBS, 50% Glycerol (glycerin, glycerine), 0.87% Sodium chloride Without Mg ²⁺ and Ca ²⁺ |
| Purity | Immunogen affinity purified |
| Clonality | Polyclonal |
| Isotype | IgG |

Applications

The Abpromise guarantee Our **Abpromise guarantee** covers the use of ab92743 in the following tested applications. The application notes include recommended starting dilutions; optimal dilutions/concentrations should be determined by the end user.

| Application | Abreviews | Notes |
|-------------|-----------|--|
| WB | | 1/500 - 1/1000. Predicted molecular weight: 144 kDa. |

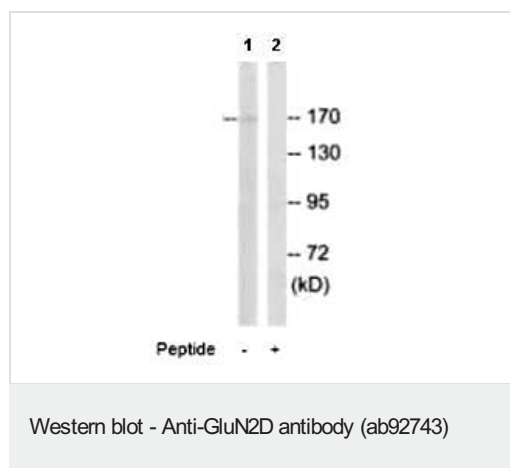
Target

Function NMDA receptor subtype of glutamate-gated ion channels with high calcium permeability and voltage-dependent sensitivity to magnesium. Mediated by glycine.

Sequence similarities Belongs to the glutamate-gated ion channel (TC 1.A.10.1) family. NR2D/GRIN2D subfamily.

Cellular localization Cell membrane. Cell junction > synapse > postsynaptic cell membrane.

Images



All lanes : Anti-GluN2D antibody (ab92743) at 1/500 dilution

Lane 1 : COS7 cell extract

Lane 2 : COS7 cell extract with immunizing peptide at 5 µg

Lysates/proteins at 10 µg per lane.

Predicted band size: 144 kDa

Please note: All products are "FOR RESEARCH USE ONLY. NOT FOR USE IN DIAGNOSTIC PROCEDURES"

Our Abpromise to you: Quality guaranteed and expert technical support

- Replacement or refund for products not performing as stated on the datasheet
- Valid for 12 months from date of delivery
- Response to your inquiry within 24 hours
- We provide support in Chinese, English, French, German, Japanese and Spanish
- Extensive multi-media technical resources to help you
- We investigate all quality concerns to ensure our products perform to the highest standards

If the product does not perform as described on this datasheet, we will offer a refund or replacement. For full details of the Abpromise, please visit <https://www.abcam.com/abpromise> or contact our technical team.

Terms and conditions

- Guarantee only valid for products bought direct from Abcam or one of our authorized distributors