




## Product datasheet

### Anti-GLUT5 antibody - N-terminal ab190555

1 Image

#### Overview

<b>Product name</b>	Anti-GLUT5 antibody - N-terminal
<b>Description</b>	Rabbit polyclonal to GLUT5 - N-terminal
<b>Host species</b>	Rabbit
<b>Tested applications</b>	<b>Suitable for:</b> WB
<b>Species reactivity</b>	<b>Reacts with:</b> Human <b>Predicted to work with:</b> Orangutan 
<b>Immunogen</b>	<p>Synthetic peptide within Human GLUT5 aa 1-100 (N terminal). The exact immunogen sequence used to generate this antibody is proprietary information. If additional detail on the immunogen is needed to determine the suitability of the antibody for your needs, please <b><u>contact</u></b> our Scientific Support team to discuss your requirements.</p> <p>Database link: <b><u>P22732</u></b></p> <p style="text-align: right;">  <b><u>Run BLAST with</u></b>  <b><u>Run BLAST with</u></b> </p>
<b>Positive control</b>	K562 cell extract.
<b>General notes</b>	<p>The Life Science industry has been in the grips of a reproducibility crisis for a number of years. Abcam is leading the way in addressing this with our range of recombinant monoclonal antibodies and knockout edited cell lines for gold-standard validation. Please check that this product meets your needs before purchasing.</p> <p>If you have any questions, special requirements or concerns, please send us an inquiry and/or contact our Support team ahead of purchase. Recommended alternatives for this product can be found below, along with publications, customer reviews and Q&amp;As</p>

#### Properties

<b>Form</b>	Liquid
<b>Storage instructions</b>	Shipped at 4°C. Store at +4°C short term (1-2 weeks). Upon delivery aliquot. Store at -20°C long term. Avoid freeze / thaw cycle.
<b>Storage buffer</b>	<p>pH: 7.40</p> <p>Preservative: 0.02% Sodium azide</p> <p>Constituents: 49% PBS, 50% Glycerol (glycerin, glycerine), 0.87% Sodium chloride</p> <p>PBS without Mg<sup>2+</sup> and Ca<sup>2+</sup>.</p>

<b>Purity</b>	Immunogen affinity purified
<b>Purification notes</b>	ab190555 was affinity-purified from rabbit antiserum by affinity-chromatography using epitope-specific peptide.
<b>Clonality</b>	Polyclonal
<b>Isotype</b>	IgG

## Applications

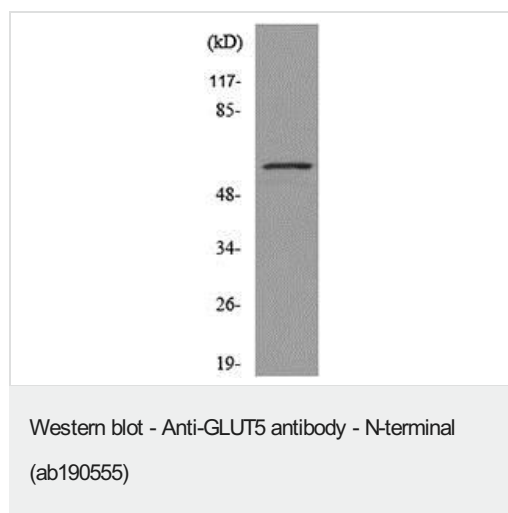
**The Abpromise guarantee** Our **Abpromise guarantee** covers the use of ab190555 in the following tested applications. The application notes include recommended starting dilutions; optimal dilutions/concentrations should be determined by the end user.

Application	Abreviews	Notes
<b>WB</b>		1/500 - 1/1000. Predicted molecular weight: 55 kDa.

## Target

<b>Function</b>	Cytochalasin B-sensitive carrier. Seems to function primarily as a fructose transporter.
<b>Tissue specificity</b>	Expressed in small intestine, and at much lower levels in kidney, skeletal muscle, and adipose tissue.
<b>Sequence similarities</b>	Belongs to the major facilitator superfamily. Sugar transporter (TC 2.A.1.1) family. Glucose transporter subfamily.
<b>Cellular localization</b>	Membrane.

## Images



Anti-GLUT5 antibody - N-terminal (ab190555) at 1/500 dilution + K562 cell extract at 30 µg

**Predicted band size:** 55 kDa

**Please note:** All products are "FOR RESEARCH USE ONLY. NOT FOR USE IN DIAGNOSTIC PROCEDURES"

**Our Abpromise to you: Quality guaranteed and expert technical support**

- Replacement or refund for products not performing as stated on the datasheet
- Valid for 12 months from date of delivery
- Response to your inquiry within 24 hours
- We provide support in Chinese, English, French, German, Japanese and Spanish
- Extensive multi-media technical resources to help you
- We investigate all quality concerns to ensure our products perform to the highest standards

If the product does not perform as described on this datasheet, we will offer a refund or replacement. For full details of the Abpromise, please visit <https://www.abcam.com/abpromise> or contact our technical team.

#### **Terms and conditions**

---

- Guarantee only valid for products bought direct from Abcam or one of our authorized distributors