

# Anti-Glutathione Reductase antibody [EPR7237] ab128933

**KO** **VALIDATED** **Recombinant** **RabMAb**

[4 References](#) [5 Images](#)

## Overview

<b>Product name</b>	Anti-Glutathione Reductase antibody [EPR7237]
<b>Description</b>	Rabbit monoclonal [EPR7237] to Glutathione Reductase
<b>Host species</b>	Rabbit
<b>Tested applications</b>	<b>Suitable for:</b> Flow Cyt (Intra), WB, ICC/IF <b>Unsuitable for:</b> IHC-P
<b>Species reactivity</b>	<b>Reacts with:</b> Human
<b>Immunogen</b>	Synthetic peptide. This information is proprietary to Abcam and/or its suppliers.
<b>Positive control</b>	Caco-2, A549 or HeLa lysate, Caco-2 and HeLa cells.
<b>General notes</b>	<p>This product is a recombinant monoclonal antibody, which offers several advantages including:</p> <ul style="list-style-type: none"> <li>- High batch-to-batch consistency and reproducibility</li> <li>- Improved sensitivity and specificity</li> <li>- Long-term security of supply</li> <li>- Animal-free production</li> </ul> <p>For more information <a href="#">see here</a>.</p> <p>Our RabMAb<sup>®</sup> technology is a patented hybridoma-based technology for making rabbit monoclonal antibodies. For details on our patents, please refer to <a href="#">RabMAb<sup>®</sup> patents</a>.</p> <p>Mouse, Rat: We have preliminary internal testing data to indicate this antibody may not react with these species. Please contact us for more information.</p>

## Properties

<b>Form</b>	Liquid
<b>Storage instructions</b>	Shipped at 4°C. Store at -20°C. Stable for 12 months at -20°C.
<b>Storage buffer</b>	<p>pH: 7.20</p> <p>Preservative: 0.01% Sodium azide</p> <p>Constituents: 9% PBS, 40% Glycerol (glycerin, glycerine), 0.05% BSA, 50% Tissue culture supernatant</p>
<b>Purity</b>	Tissue culture supernatant

Clonality	Monoclonal
Clone number	EPR7237
Isotype	IgG

### Applications

**The Abpromise guarantee** Our **Abpromise guarantee** covers the use of ab128933 in the following tested applications. The application notes include recommended starting dilutions; optimal dilutions/concentrations should be determined by the end user.

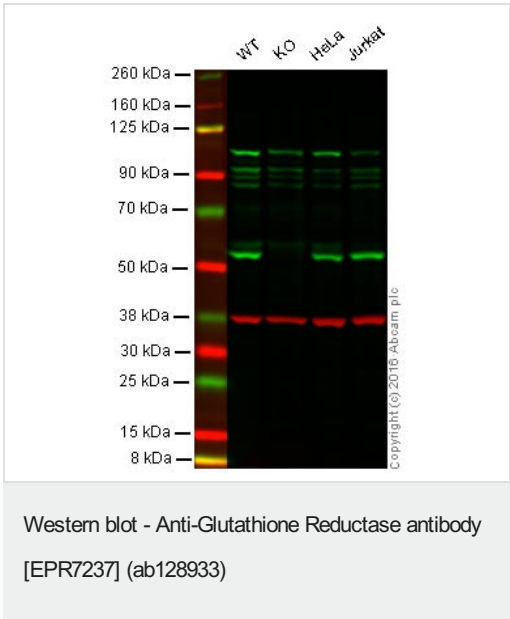
Application	Abreviews	Notes
Flow Cyt (Intra)		1/100.
WB		1/10000 - 1/50000. Detects a band of approximately 50 kDa (predicted molecular weight: 56 kDa).
ICC/IF		1/250 - 1/500.

**Application notes** Is unsuitable for IHC-P.

### Target

Function	Maintains high levels of reduced glutathione in the cytosol.
Sequence similarities	Belongs to the class-I pyridine nucleotide-disulfide oxidoreductase family.
Domain	Each subunit can be divided into 4 domains that are consecutive along the polypeptide chain. Domains 1 and 2 bind FAD and NADPH, respectively. Domain 4 forms the interface.
Cellular localization	Cytoplasm and Mitochondrion.

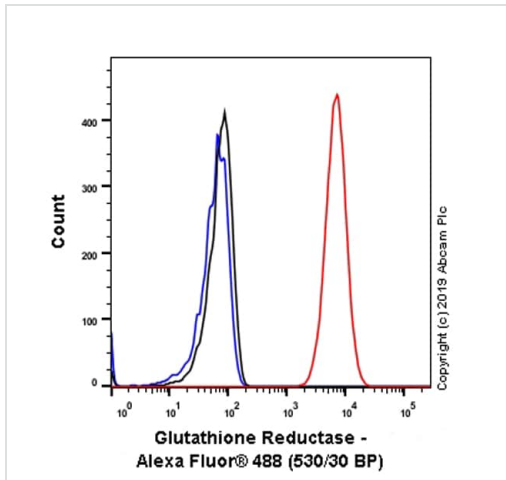
### Images



**Lane 1:** Wild-type HAP1 cell lysate (20 µg)  
**Lane 2:** Glutathione Reductase knockout HAP1 cell lysate (20 µg)  
**Lane 3:** HeLa cell lysate (20 µg)  
**Lane 4:** Jurkat cell lysate (20 µg)  
**Lanes 1 - 4:** Merged signal (red and green). Green - ab128933 observed at 55 kDa. Red - loading control, [ab8245](#), observed at 37 kDa.

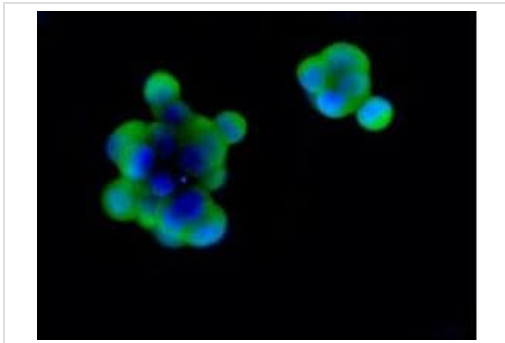
ab128933 was shown to specifically react with Glutathione Reductase when Glutathione Reductase knockout samples were used, along with additional cross-reactive bands. Wild-type and Glutathione Reductase knockout samples were subjected to SDS-PAGE. Ab128933 and [ab8245](#) (loading control to GAPDH) were diluted at 1/10000 and 1/10,000 dilution respectively and incubated overnight at 4C. Blots were developed with Goat anti-Rabbit IgG

H&L (IRDye® 800CW) preadsorbed (**ab216773**) and Goat anti-Mouse IgG H&L (IRDye® 680RD) preadsorbed (**ab216776**) secondary antibodies at 1/10,000 dilution for 1 hour at room temperature before imaging.



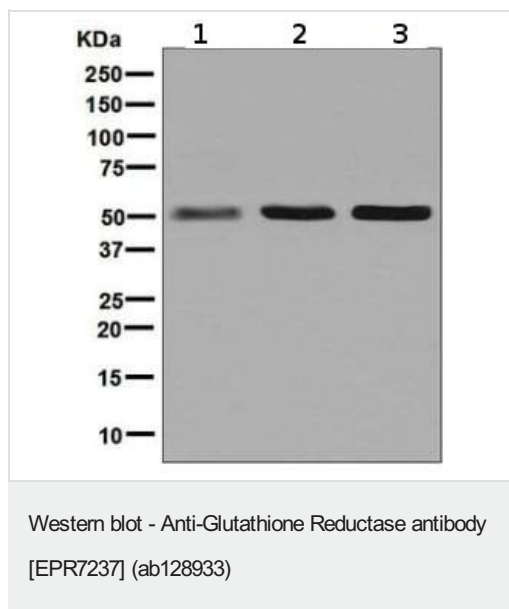
Flow Cytometry (Intracellular) - Anti-Glutathione Reductase antibody [EPR7237] (ab128933)

Flow Cytometry analysis of HeLa (Human cervix adenocarcinoma epithelial cell) cells labeling Glutathione Reductase with purified ab128933 at 1/100 dilution (10 µg/mL) (Red). Cells were fixed with 4% Paraformaldehyde and permeabilised with 90% Methanol. A Goat anti rabbit IgG (Alexa Fluor® 488, **ab150077**) secondary antibody was used at 1/2000. Isotype control - Rabbit monoclonal IgG (Black). Unlabeled control - Cells without incubation with primary antibody and secondary antibody (Blue).



Immunocytochemistry/ Immunofluorescence - Anti-Glutathione Reductase antibody [EPR7237] (ab128933)

ab128933, at a 1/100 dilution, staining Human Glutathione Reductase in HeLa cells, by Immunofluorescence.



**All lanes :** Anti-Glutathione Reductase antibody [EPR7237] (ab128933) at 1/10000 dilution

**Lane 1 :** Caco-2 cell lysate

**Lane 2 :** A549 cell lysate

**Lane 3 :** HeLa cell lysate

Lysates/proteins at 10 µg per lane.

#### Secondary

**All lanes :** HRP labelled goat anti-rabbit at 1/2000 dilution

**Predicted band size:** 56 kDa

**Observed band size:** 50 kDa

Why choose a recombinant antibody?

**Research with confidence**  
Consistent and reproducible results

**Long-term and scalable supply**  
Recombinant technology

**Success from the first experiment**  
Confirmed specificity

**Ethical standards compliant**  
Animal-free production

Anti-Glutathione Reductase antibody [EPR7237] (ab128933)

**Please note:** All products are "FOR RESEARCH USE ONLY. NOT FOR USE IN DIAGNOSTIC PROCEDURES"

#### Our Abpromise to you: Quality guaranteed and expert technical support

- Replacement or refund for products not performing as stated on the datasheet
- Valid for 12 months from date of delivery
- Response to your inquiry within 24 hours
- We provide support in Chinese, English, French, German, Japanese and Spanish
- Extensive multi-media technical resources to help you
- We investigate all quality concerns to ensure our products perform to the highest standards

If the product does not perform as described on this datasheet, we will offer a refund or replacement. For full details of the Abpromise, please visit <https://www.abcam.com/abpromise> or contact our technical team.

## Terms and conditions

---

- Guarantee only valid for products bought direct from Abcam or one of our authorized distributors