


Product datasheet

Anti-Glycogen synthase 1/GYS1 antibody [EP817Y] ab40810

KO VALIDATED Recombinant RabMAB

★★★★☆ [6 Abreviews](#) [19 References](#) [3 Images](#)

Overview

Product name	Anti-Glycogen synthase 1/GYS1 antibody [EP817Y]
Description	Rabbit monoclonal [EP817Y] to Glycogen synthase 1/GYS1
Host species	Rabbit
Tested applications	Suitable for: WB Unsuitable for: Flow Cyt (Intra) or ICC/IF
Species reactivity	Reacts with: Human Predicted to work with: Mouse, Rat 
Immunogen	Synthetic peptide within Human Glycogen synthase 1/GYS1 aa 700-800 (C terminal). The exact sequence is proprietary.
Positive control	WB: HeLa whole cell lysate (ab150035), HEK293 cell lysate.
General notes	This product is a recombinant monoclonal antibody, which offers several advantages including: <ul style="list-style-type: none">- High batch-to-batch consistency and reproducibility- Improved sensitivity and specificity- Long-term security of supply- Animal-free production For more information see here . Our RabMAB [®] technology is a patented hybridoma-based technology for making rabbit monoclonal antibodies. For details on our patents, please refer to RabMAB[®] patents .

Properties

Form	Liquid
Storage instructions	Shipped at 4°C. Store at +4°C short term (1-2 weeks). Upon delivery aliquot. Store at -20°C. Avoid freeze / thaw cycle.
Storage buffer	pH: 7.20 Preservative: 0.01% Sodium azide Constituents: 50% Glycerol (glycerin, glycerine), 0.05% BSA, 49% PBS
Purity	Protein A purified

Clonality	Monoclonal
Clone number	EP817Y
Isotype	IgG

Applications

The Abpromise guarantee Our **Abpromise guarantee** covers the use of ab40810 in the following tested applications. The application notes include recommended starting dilutions; optimal dilutions/concentrations should be determined by the end user.

Application	Abreviews	Notes
WB	★★★★★ (3)	1/10000 - 1/50000. Detects a band of approximately 85 kDa (predicted molecular weight: 81 kDa).

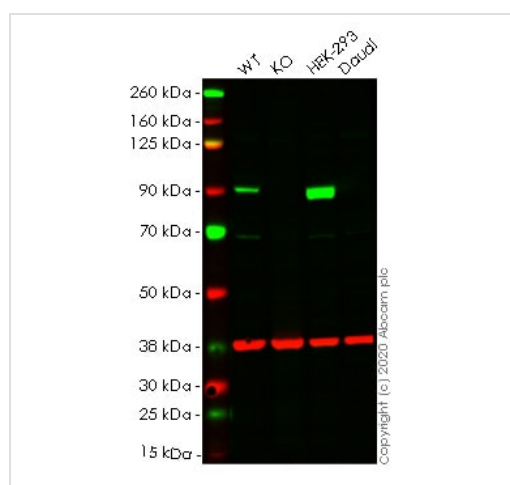
Application notes Is unsuitable for Flow Cyt (Intra) or ICC/IF.

Target

Function Transfers the glycosyl residue from UDP-Glc to the non-reducing end of alpha-1,4-glucan.
Pathway Glycan biosynthesis; glycogen biosynthesis.
Involvement in disease Defects in GYS1 are the cause of muscle glycogen storage disease type 0 (GSD0b) [MIM:611556]; also known as muscle glycogen synthase deficiency. GSD0b is a metabolic disorder characterized by fasting hypoglycemia presenting in infancy or early childhood. The role of muscle glycogen is to provide critical energy during bursts of activity and sustained muscle work.

Sequence similarities Belongs to the glycosyltransferase 3 family.

Images



Western blot - Anti-Glycogen synthase 1/GYS1 antibody [EP817Y] (ab40810)

All lanes : Anti-Glycogen synthase 1/GYS1 antibody [EP817Y] (ab40810) at 1/10000 dilution

Lane 1 : Wild-type HeLa lysate

Lane 2 : Glycogen synthase 1/GYS1 knockout HeLa lysate

Lane 3 : HEK-293 lysate

Lane 4 : Daudi lysate

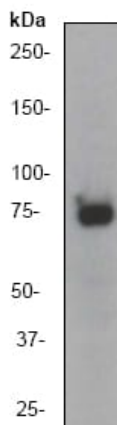
Lysates/proteins at 20 µg per lane.

Performed under reducing conditions.

Predicted band size: 81 kDa

Lanes 1-4: Merged signal (red and green). Green - ab40810 observed at 80 kDa. Red - loading control **ab8245** observed at 37 kDa.

ab40810 Recombinant Anti-Glycogen synthase 1/GYS1 antibody [EP817Y] was shown to specifically react with Glycogen synthase 1/GYS1 in wild-type HeLa cells. Loss of signal was observed when knockout cell line **ab265388** (knockout cell lysate **ab257462**) was used. Wild-type and Glycogen synthase 1/GYS1 knockout samples were subjected to SDS-PAGE. ab40810 and Anti-GAPDH antibody [6C5] - Loading Control (**ab8245**) were incubated overnight at 4°C at 1 in 10000 dilution and 1 in 20000 dilution respectively. Blots were developed with Goat anti-Rabbit IgG H&L (IRDye® 800CW) preadsorbed (**ab216773**) and Goat anti-Mouse IgG H&L (IRDye® 680RD) preadsorbed (**ab216776**) secondary antibodies at 1 in 20000 dilution for 1 hour at room temperature before imaging.







Anti-Glycogen synthase 1/GYS1 antibody [EP817Y] (ab40810) at 1/50000 dilution + HeLa cell lysate at 10 µg

Predicted band size: 81 kDa

Observed band size: 85 kDa

Western blot - Anti-Glycogen synthase 1/GYS1 antibody [EP817Y] (ab40810)

Why choose a recombinant antibody?

 <p>Research with confidence Consistent and reproducible results</p>	 <p>Long-term and scalable supply Recombinant technology</p>
 <p>Success from the first experiment Confirmed specificity</p>	 <p>Ethical standards compliant Animal-free production</p>

Anti-Glycogen synthase 1/GYS1 antibody [EP817Y]
(ab40810)

Please note: All products are "FOR RESEARCH USE ONLY. NOT FOR USE IN DIAGNOSTIC PROCEDURES"

Our Abpromise to you: Quality guaranteed and expert technical support

- Replacement or refund for products not performing as stated on the datasheet
- Valid for 12 months from date of delivery
- Response to your inquiry within 24 hours
- We provide support in Chinese, English, French, German, Japanese and Spanish
- Extensive multi-media technical resources to help you
- We investigate all quality concerns to ensure our products perform to the highest standards

If the product does not perform as described on this datasheet, we will offer a refund or replacement. For full details of the Abpromise, please visit <https://www.abcam.com/abpromise> or contact our technical team.

Terms and conditions

- Guarantee only valid for products bought direct from Abcam or one of our authorized distributors