




Product datasheet

Goat polyclonal to GAD67/GAD1 ab80589

★★★★☆ [2 Abreviews](#) [5 References](#) [3 Images](#)

Overview

Product name	Goat polyclonal to GAD67/GAD1
Host species	Goat
Specificity	ab80589 is expected to recognize isoform GAD67. There is no cross-reactivity expected with GAD2 (isoform GAD65).
Tested applications	Suitable for: Flow Cyt, ICC/IF, IHC-P, WB
Species reactivity	Reacts with: Human Predicted to work with: Cow, Cat, Dog, Pig, Chimpanzee, Orangutan 
Immunogen	Synthetic peptide corresponding to Human GAD1/GAD67 aa 500 to the C-terminus (internal sequence) (Cysteine residue). NP_000808.2. Database link: Q99259-1  Run BLAST with  Run BLAST with
Positive control	WB: Human brain (cerebral cortex) lysate in RIPA buffer. Flow Cyt: A431 cells; ICC/IF: A431 cells
General notes	The Life Science industry has been in the grips of a reproducibility crisis for a number of years. Abcam is leading the way in addressing this with our range of recombinant monoclonal antibodies and knockout edited cell lines for gold-standard validation. Please check that this product meets your needs before purchasing. If you have any questions, special requirements or concerns, please send us an inquiry and/or contact our Support team ahead of purchase. Recommended alternatives for this product can be found below, along with publications, customer reviews and Q&As

Properties

Form	Liquid
Storage instructions	Shipped at 4°C. Upon delivery aliquot and store at -20°C. Avoid repeated freeze / thaw cycles.
Storage buffer	pH: 7.30 Preservative: 0.02% Sodium azide Constituents: 0.5% BSA, Tris buffered saline
Purity	Immunogen affinity purified
Purification notes	ab80589 is purified from goat serum by ammonium sulphate precipitation followed by antigen affinity chromatography using the immunizing peptide
Clonality	Polyclonal

Isotype

IgG

Applications

The Abpromise guarantee

Our **Abpromise guarantee** covers the use of ab80589 in the following tested applications.

The application notes include recommended starting dilutions; optimal dilutions/concentrations should be determined by the end user.

Application	Abreviews	Notes
Flow Cyt		Use a concentration of 10 µg/ml.
ICC/IF		Use a concentration of 10 µg/ml.
IHC-P		Use at an assay dependent concentration.
WB		Use a concentration of 0.5 - 1.5 µg/ml. Predicted molecular weight: 67 kDa. 1 hour primary incubation is recommended for this product.

Target

Function

Catalyzes the production of GABA.

Tissue specificity

Isoform 3 is expressed in pancreatic islets, testis, adrenal cortex, and perhaps other endocrine tissues, but not in brain.

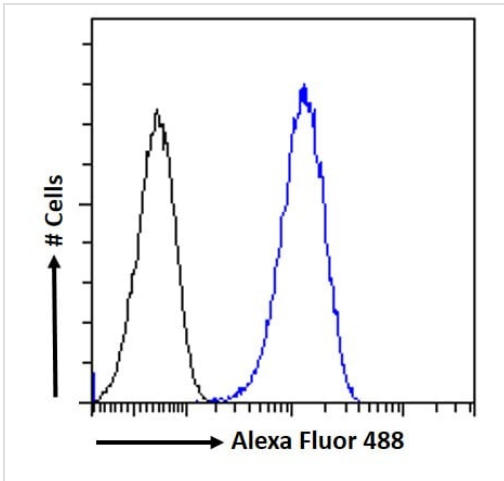
Involvement in disease

Defects in GAD1 are the cause of cerebral palsy spastic quadriplegic type 1 (CPSQ1) [MIM:603513]. A non-progressive disorder of movement and/or posture resulting from defects in the developing central nervous system. Affected individuals manifest symmetrical, non-progressive spasticity and no adverse perinatal history or obvious underlying alternative diagnosis. Developmental delay, mental retardation and sometimes epilepsy can be part of the clinical picture.

Sequence similarities

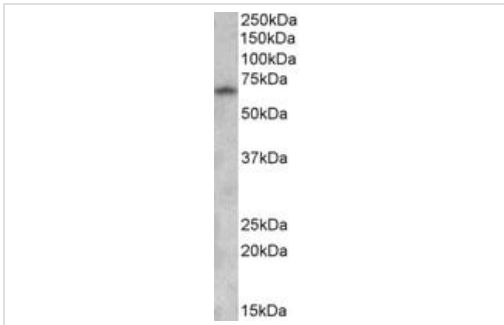
Belongs to the group II decarboxylase family.

Images



Flow Cytometry - Goat polyclonal to GAD67/GAD1 (ab80589)

Flow cytometric analysis of paraformaldehyde fixed A431 cells (blue line), permeabilized with 0.5% Triton. Primary incubation 1hr (10µg/mL) followed by Alexa Fluor 488 secondary antibody (1µg/mL). IgG control: Unimmunized goat IgG (black line) followed by Alexa Fluor 488 secondary antibody.



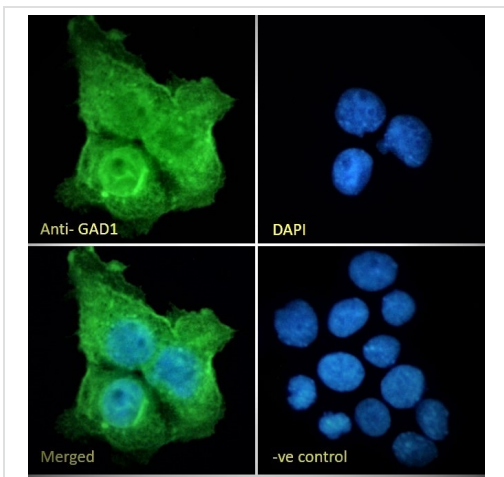
Western blot - Goat polyclonal to GAD67/GAD1 (ab80589)

Goat polyclonal to GAD67/GAD1 (ab80589) at 0.5 µg/ml + Human brain (cerebral cortex) lysate in RIPA buffer at 35 µg

Developed using the ECL technique.

Predicted band size: 67 kDa

Observed band size: 67 kDa



Immunocytochemistry/ Immunofluorescence - Goat polyclonal to GAD67/GAD1 (ab80589)

Immunocytochemistry/Immunofluorescence analysis of paraformaldehyde fixed A431 cells, permeabilized with 0.15% Triton. Primary incubation 1hr (10µg/mL) followed by Alexa Fluor 488 secondary antibody (2µg/mL), showing plasma membrane, cytoplasmic and nuclear staining. The nuclear stain is DAPI (blue). Negative control: Unimmunized goat IgG (10µg/mL) followed by Alexa Fluor 488 secondary antibody (2µg/mL).

Please note: All products are "FOR RESEARCH USE ONLY. NOT FOR USE IN DIAGNOSTIC PROCEDURES"

Our Abpromise to you: Quality guaranteed and expert technical support

- Replacement or refund for products not performing as stated on the datasheet
- Valid for 12 months from date of delivery
- Response to your inquiry within 24 hours

- We provide support in Chinese, English, French, German, Japanese and Spanish
- Extensive multi-media technical resources to help you
- We investigate all quality concerns to ensure our products perform to the highest standards

If the product does not perform as described on this datasheet, we will offer a refund or replacement. For full details of the Abpromise, please visit <https://www.abcam.com/abpromise> or contact our technical team.

Terms and conditions

- Guarantee only valid for products bought direct from Abcam or one of our authorized distributors