

## Product datasheet

### Anti-Golgin-245 antibody ab122250

★★★★★ [5 Abreviews](#) [2 Images](#)

#### Overview

<b>Product name</b>	Anti-Golgin-245 antibody
<b>Description</b>	Rabbit polyclonal to Golgin-245
<b>Host species</b>	Rabbit
<b>Tested applications</b>	<b>Suitable for:</b> ICC/IF, IHC-P
<b>Species reactivity</b>	<b>Reacts with:</b> Human
<b>Immunogen</b>	Recombinant fragment corresponding to Human Golgin-245 aa 1482-1584. Database link: <a href="#">Q13439</a>
<b>Positive control</b>	Human stomach tissue
<b>General notes</b>	<p>The Life Science industry has been in the grips of a reproducibility crisis for a number of years. Abcam is leading the way in addressing this with our range of recombinant monoclonal antibodies and knockout edited cell lines for gold-standard validation. Please check that this product meets your needs before purchasing.</p> <p>If you have any questions, special requirements or concerns, please send us an inquiry and/or contact our Support team ahead of purchase. Recommended alternatives for this product can be found below, along with publications, customer reviews and Q&amp;As</p>

#### Properties

<b>Form</b>	Liquid
<b>Storage instructions</b>	Shipped at 4°C. Upon delivery aliquot and store at -20°C. Avoid freeze / thaw cycles.
<b>Storage buffer</b>	pH: 7.20 Preservative: 0.02% Sodium azide Constituents: 59% PBS, 40% Glycerol (glycerin, glycerine)
<b>Purity</b>	Immunogen affinity purified
<b>Clonality</b>	Polyclonal
<b>Isotype</b>	IgG

#### Applications

**The Abpromise guarantee** Our [Abpromise guarantee](#) covers the use of ab122250 in the following tested applications.

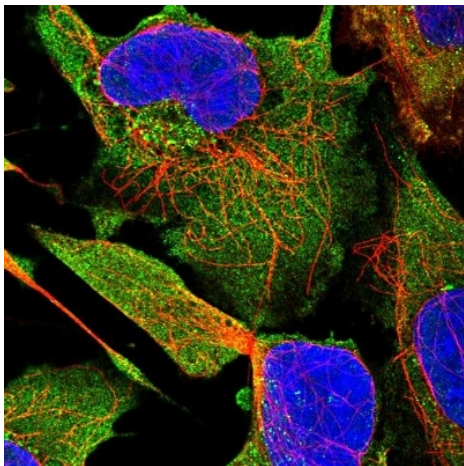
The application notes include recommended starting dilutions; optimal dilutions/concentrations should be determined by the end user.

Application	Abreviews	Notes
ICC/IF	★★★★★ (3)	Use a concentration of 0.25 - 2 µg/ml.
IHC-P		1/1000 - 1/2500. Perform heat mediated antigen retrieval with citrate buffer pH 6 before commencing with IHC staining protocol.

## Target

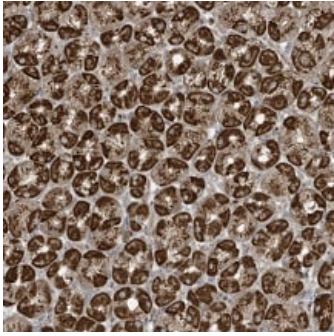
Function	May play role in delivery of transport vesicles containing GPIlinked proteins from the trans-Golgi network through its interaction with MACF1.
Sequence similarities	Contains 1 GRIP domain.
Domain	Extended rod-like protein with coiled-coil domains.
Cellular localization	Cytoplasm. Golgi apparatus membrane. Golgi apparatus.

## Images



Immunofluorescent staining of human cell line U-2 OS shows positivity in cytoplasm & vesicles.

Immunocytochemistry/ Immunofluorescence - Anti-Golgin-245 antibody (ab122250)



ab122250, at 1/1200, staining Golgin-245 in paraffin embedded Human stomach tissue by Immunohistochemistry.

Immunohistochemistry (Formalin/PFA-fixed paraffin-embedded sections) - Anti-Golgin-245 antibody (ab122250)

**Please note:** All products are "FOR RESEARCH USE ONLY. NOT FOR USE IN DIAGNOSTIC PROCEDURES"

### Our Abpromise to you: Quality guaranteed and expert technical support

---

- Replacement or refund for products not performing as stated on the datasheet
- Valid for 12 months from date of delivery
- Response to your inquiry within 24 hours
- We provide support in Chinese, English, French, German, Japanese and Spanish
- Extensive multi-media technical resources to help you
- We investigate all quality concerns to ensure our products perform to the highest standards

If the product does not perform as described on this datasheet, we will offer a refund or replacement. For full details of the Abpromise, please visit <https://www.abcam.com/abpromise> or contact our technical team.

### Terms and conditions

---

- Guarantee only valid for products bought direct from Abcam or one of our authorized distributors