


### Anti-GOLPH3/MIDAS antibody ab98023

★★★★★ [2 Abreviews](#) [16 References](#) [2 Images](#)

#### Overview

<b>Product name</b>	Anti-GOLPH3/MIDAS antibody
<b>Description</b>	Rabbit polyclonal to GOLPH3/MIDAS
<b>Host species</b>	Rabbit
<b>Tested applications</b>	<b>Suitable for:</b> WB, ICC/IF
<b>Species reactivity</b>	<b>Reacts with:</b> Mouse, Rat, Human <b>Predicted to work with:</b> Cow, Zebrafish 
<b>Immunogen</b>	Synthetic peptide. This information is proprietary to Abcam and/or its suppliers.
<b>General notes</b>	<p>The Life Science industry has been in the grips of a reproducibility crisis for a number of years. Abcam is leading the way in addressing this with our range of recombinant monoclonal antibodies and knockout edited cell lines for gold-standard validation. Please check that this product meets your needs before purchasing.</p> <p>If you have any questions, special requirements or concerns, please send us an inquiry and/or contact our Support team ahead of purchase. Recommended alternatives for this product can be found below, along with publications, customer reviews and Q&amp;As</p>

#### Properties

<b>Form</b>	Liquid
<b>Storage instructions</b>	Shipped at 4°C. Store at +4°C short term (1-2 weeks). Upon delivery aliquot. Store at -20°C or -80°C. Avoid freeze / thaw cycle.
<b>Storage buffer</b>	<p>pH: 7.40</p> <p>Preservative: 0.02% Sodium azide</p> <p>Constituents: PBS, 1% BSA</p> <p>Batches of this product that have a concentration &lt; 1mg/ml may have BSA added as a stabilising agent. If you would like information about the formulation of a specific lot, please contact our scientific support team who will be happy to help.</p>
<b>Purity</b>	Immunogen affinity purified
<b>Clonality</b>	Polyclonal
<b>Isotype</b>	IgG

## Applications

### The Abpromise guarantee

Our **Abpromise guarantee** covers the use of ab98023 in the following tested applications.

The application notes include recommended starting dilutions; optimal dilutions/concentrations should be determined by the end user.

Application	Abreviews	Notes
WB	★★★★★ (1)	Use a concentration of 1 µg/ml. Detects a band of approximately 34 kDa (predicted molecular weight: 34 kDa).
ICC/IF	★★★★★ (1)	Use a concentration of 5 µg/ml.

## Target

### Function

Involved in modulation of mTOR signaling. Involved in the regulation of mitochondrial lipids, leading to increase of mitochondrial mass. Potential oncogene.

### Tissue specificity

Detected in muscle fibers of patients with mitochondrial diseases; not detected in normal muscle fibers.

### Sequence similarities

Belongs to the GOLPH3/VPS74 family.

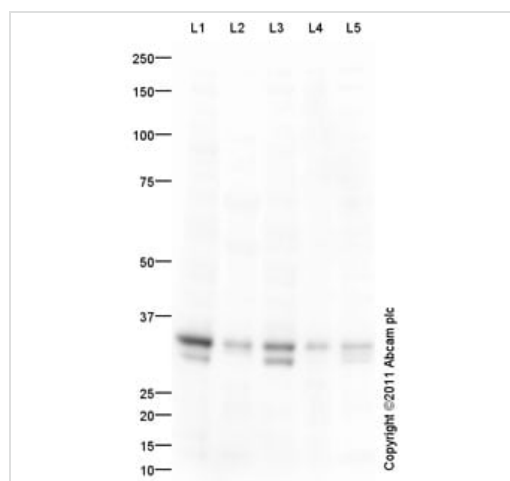
### Post-translational modifications

Phosphorylated.

### Cellular localization

Cell membrane. Endosome. Cytoplasm. Golgi apparatus > Golgi stack membrane. Mitochondrion intermembrane space.

## Images



Western blot - Anti-GOLPH3/MIDAS antibody (ab98023)

**All lanes :** Anti-GOLPH3/MIDAS antibody (ab98023) at 1 µg/ml

**Lane 1 :** HeLa (Human epithelial carcinoma cell line) Whole Cell Lysate

**Lane 2 :** Lung (Human) Tissue Lysate

**Lane 3 :** A549 (Human lung adenocarcinoma epithelial cell line) Whole Cell Lysate

**Lane 4 :** Mouse lung normal tissue lysate - total protein ([ab29297](#))

**Lane 5 :** Lung (Rat) Tissue Lysate

Lysates/proteins at 10 µg per lane.

### Secondary

**All lanes :** Goat Anti-Rabbit IgG H&L (HRP) preadsorbed ([ab97080](#)) at 1/5000 dilution

Developed using the ECL technique.

Performed under reducing conditions.

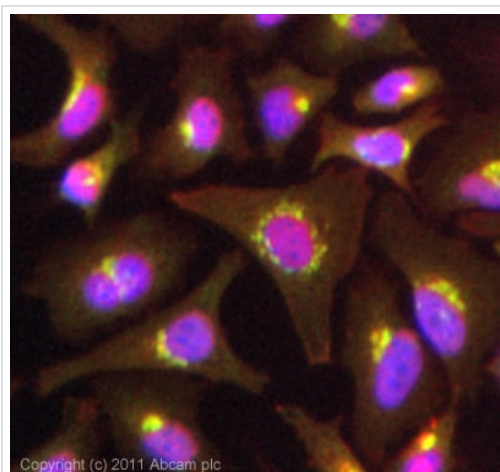
**Predicted band size:** 34 kDa

**Observed band size:** 34 kDa

**Additional bands at:** 32 kDa. We are unsure as to the identity of these extra bands.

**Exposure time:** 30 seconds

The predicted molecular weight of GOLPH3/MIDAS is 34-kDa. We are unsure why we are seeing an additional band in HeLa and A549 whole cell lysates. Abcam welcomes customer feedback and would appreciate any comments regarding this product and the data presented above.



Copyright (c) 2011 Abcam plc

Immunocytochemistry/ Immunofluorescence - Anti-GOLPH3/MIDAS antibody (ab98023)

ICC/IF image of ab98023 stained HeLa cells. The cells were 4% PFA fixed (10 min) and then incubated in 1%BSA / 10% normal goat serum / 0.3M glycine in 0.1% PBS-Tween for 1h to permeabilise the cells and block non-specific protein-protein interactions. The cells were then incubated with the antibody (ab98023, 5µg/ml) overnight at +4°C. The secondary antibody (green) was **ab96899**, DyLight® 488 goat anti-rabbit IgG (H+L) used at a 1/250 dilution for 1h. Alexa Fluor® 594 WGA was used to label plasma membranes (red) at a 1/200 dilution for 1h. DAPI was used to stain the cell nuclei (blue) at a concentration of 1.43µM. This antibody also gave a positive result in 4% PFA fixed (10 min) Hek293, HepG2 and MCF7 cells at 5µg/ml.

**Please note:** All products are "FOR RESEARCH USE ONLY. NOT FOR USE IN DIAGNOSTIC PROCEDURES"

#### Our Abpromise to you: Quality guaranteed and expert technical support

- Replacement or refund for products not performing as stated on the datasheet
- Valid for 12 months from date of delivery
- Response to your inquiry within 24 hours
- We provide support in Chinese, English, French, German, Japanese and Spanish
- Extensive multi-media technical resources to help you
- We investigate all quality concerns to ensure our products perform to the highest standards

If the product does not perform as described on this datasheet, we will offer a refund or replacement. For full details of the Abpromise,

please visit <https://www.abcam.com/abpromise> or contact our technical team.

#### **Terms and conditions**

---

- Guarantee only valid for products bought direct from Abcam or one of our authorized distributors