

## Product datasheet

# Anti-GPCR G2A antibody ab116586

[2 References](#) [1 Image](#)

### Overview

---

<b>Product name</b>	Anti-GPCR G2A antibody
<b>Description</b>	Rabbit polyclonal to GPCR G2A
<b>Host species</b>	Rabbit
<b>Tested applications</b>	<b>Suitable for:</b> IHC-P
<b>Species reactivity</b>	<b>Reacts with:</b> Human
<b>Immunogen</b>	Synthetic peptide against the C-terminal domain of Human GPCRG2A protein (Q9UNW8) conjugated to KLH.
<b>Positive control</b>	Human Spleen tissue.
<b>General notes</b>	<p>The Life Science industry has been in the grips of a reproducibility crisis for a number of years. Abcam is leading the way in addressing this with our range of recombinant monoclonal antibodies and knockout edited cell lines for gold-standard validation. Please check that this product meets your needs before purchasing.</p> <p>If you have any questions, special requirements or concerns, please send us an inquiry and/or contact our Support team ahead of purchase. Recommended alternatives for this product can be found below, along with publications, customer reviews and Q&amp;As</p>

### Properties

---

<b>Form</b>	Liquid
<b>Storage instructions</b>	Shipped at 4°C. Store at +4°C short term (1-2 weeks). Upon delivery aliquot. Store at -20°C or -80°C. Avoid freeze / thaw cycle.
<b>Storage buffer</b>	pH: 7.4 Preservative: 0.1% Sodium azide Constituent: 99% PBS
<b>Purity</b>	Immunogen affinity purified
<b>Clonality</b>	Polyclonal
<b>Isotype</b>	IgG

### Applications

---

## The Abpromise guarantee

Our **Abpromise guarantee** covers the use of ab116586 in the following tested applications.

The application notes include recommended starting dilutions; optimal dilutions/concentrations should be determined by the end user.

Application	Abreviews	Notes
IHC-P		Use a concentration of 12 µg/ml. Perform heat mediated antigen retrieval with citrate buffer pH 6 before commencing with IHC staining protocol.

## Target

### Function

Receptor for an unknown ligand. Activates a G alpha protein, most likely G alpha(q). May be involved in apoptosis. Functions at the G2/M checkpoint to delay mitosis. May serve as a mechanism for T- and B-cells, and other cell types, to slow their proliferation and repair damaged DNA to ensure proper replication.

### Tissue specificity

Highly expressed in macrophages and hematopoietic tissues rich in lymphocytes, like spleen and thymus. Weakly expressed in heart and lung. In atherosclerotic plaques, expression is observed around the lipid core and at the shoulder region.

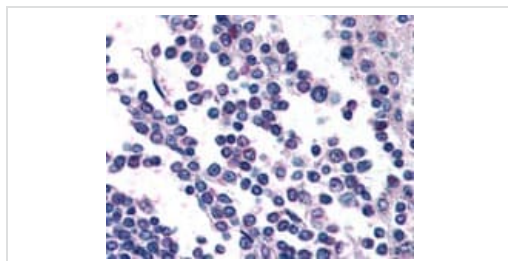
### Sequence similarities

Belongs to the G-protein coupled receptor 1 family.

### Cellular localization

Cell membrane. Internalized and accumulated in endosomal compartments. LPC triggers the relocalization from the endosomal compartment to the cell surface.

## Images



Immunohistochemistry Image of Human Spleen (formalin-fixed, paraffin-embedded) stained with GPCR2A antibody (ab116586) at 11 µg/ml followed by biotinylated goat anti-rabbit IgG secondary antibody, alkaline phosphatase-streptavidin and chromogen.

Immunohistochemistry (Formalin/PFA-fixed paraffin-embedded sections) - Anti-GPCR G2A antibody (ab116586)

**Please note:** All products are "FOR RESEARCH USE ONLY. NOT FOR USE IN DIAGNOSTIC PROCEDURES"

## Our Abpromise to you: Quality guaranteed and expert technical support

- Replacement or refund for products not performing as stated on the datasheet
- Valid for 12 months from date of delivery
- Response to your inquiry within 24 hours
- We provide support in Chinese, English, French, German, Japanese and Spanish

- Extensive multi-media technical resources to help you
- We investigate all quality concerns to ensure our products perform to the highest standards

If the product does not perform as described on this datasheet, we will offer a refund or replacement. For full details of the Abpromise, please visit <https://www.abcam.com/abpromise> or contact our technical team.

### **Terms and conditions**

---

- Guarantee only valid for products bought direct from Abcam or one of our authorized distributors