


Product datasheet

Anti-GPCR GPR35 antibody ab150635

★★★★★ [1 Abreviews](#) [1 References](#) [2 Images](#)

Overview

Product name	Anti-GPCR GPR35 antibody
Description	Rabbit polyclonal to GPCR GPR35
Host species	Rabbit
Specificity	BLAST analysis of the peptide immunogen showed no homology with other Human proteins.
Tested applications	Suitable for: IHC-P, ICC
Species reactivity	Reacts with: Human Predicted to work with: Monkey, Gorilla 
Immunogen	Synthetic peptide containing 19 amino acids from the C terminus of Human GPCR GPR35 (UniProt ID: Q9HC97).
Positive control	Human pancreas tissue; HEK293 Human embryonic kidney cells transfected with GPCR GPR35
General notes	<p>The Life Science industry has been in the grips of a reproducibility crisis for a number of years. Abcam is leading the way in addressing this with our range of recombinant monoclonal antibodies and knockout edited cell lines for gold-standard validation. Please check that this product meets your needs before purchasing.</p> <p>If you have any questions, special requirements or concerns, please send us an inquiry and/or contact our Support team ahead of purchase. Recommended alternatives for this product can be found below, along with publications, customer reviews and Q&As</p>

Properties

Form	Liquid
Storage instructions	Shipped at 4°C.
Storage buffer	pH: 7.4 Preservative: 0.1% Sodium azide Constituent: 99% PBS
Purity	Immunogen affinity purified
Clonality	Polyclonal
Isotype	IgG

Applications

Applications

The Abpromise guarantee

Our **Abpromise guarantee** covers the use of ab150635 in the following tested applications.

The application notes include recommended starting dilutions; optimal dilutions/concentrations should be determined by the end user.

Application	Abreviews	Notes
IHC-P		Use a concentration of 12 - 23 µg/ml. Perform heat mediated antigen retrieval before commencing with IHC staining protocol.
ICC		Use at an assay dependent concentration.

Target

Function

Acts as a receptor for kynurenic acid, an intermediate in the tryptophan metabolic pathway. The activity of this receptor is mediated by G-proteins that elicit calcium mobilization and inositol phosphate production through G(qi/o) proteins.

Tissue specificity

Predominantly expressed in immune and gastrointestinal tissues.

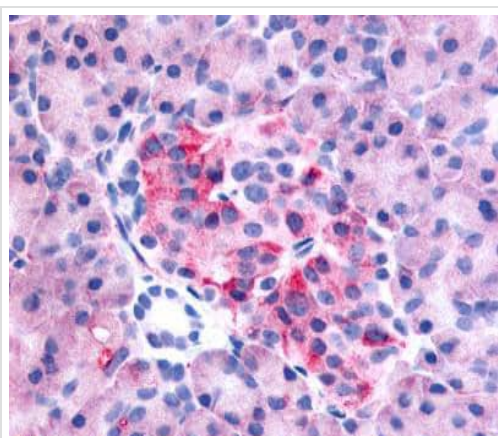
Sequence similarities

Belongs to the G-protein coupled receptor 1 family.

Cellular localization

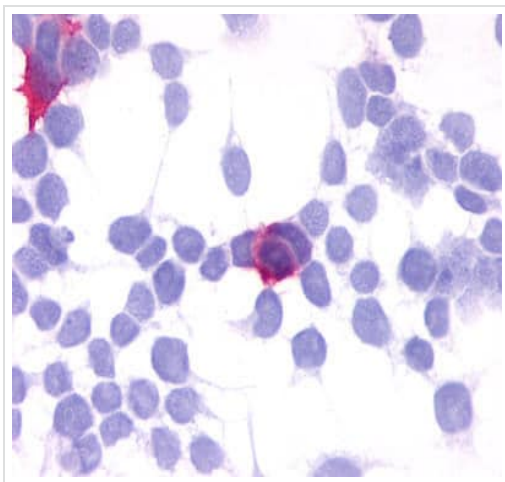
Cell membrane. Internalized to the cytoplasm after exposure to kynurenic acid.

Images



Immunohistochemical analysis of formalin fixed, paraffin embedded Human pancreas tissue labeling GPCR GPR35 with ab150635 at 23 µg/ml after heat induced antigen retrieval.

Immunohistochemistry (Formalin/PFA-fixed paraffin-embedded sections) - Anti-GPCR GPR35 antibody (ab150635)



Immunocytochemistry - Anti-GPCR GPR35 antibody
(ab150635)

Immunocytochemical analysis of GPCR GPR35 transfected
HEK293 Human embryonic kidney cells labeling GPCR GPR35
with ab150635.

Please note: All products are "FOR RESEARCH USE ONLY. NOT FOR USE IN DIAGNOSTIC PROCEDURES"

Our Abpromise to you: Quality guaranteed and expert technical support

- Replacement or refund for products not performing as stated on the datasheet
- Valid for 12 months from date of delivery
- Response to your inquiry within 24 hours
- We provide support in Chinese, English, French, German, Japanese and Spanish
- Extensive multi-media technical resources to help you
- We investigate all quality concerns to ensure our products perform to the highest standards

If the product does not perform as described on this datasheet, we will offer a refund or replacement. For full details of the Abpromise, please visit <https://www.abcam.com/abpromise> or contact our technical team.

Terms and conditions

- Guarantee only valid for products bought direct from Abcam or one of our authorized distributors