

## Product datasheet

# Anti-GPCR GPR48/LGR4 antibody ab75501

★★★★★ [1 Abreviews](#) [1 References](#) [1 Image](#)

### Overview

<b>Product name</b>	Anti-GPCR GPR48/LGR4 antibody
<b>Description</b>	Rabbit polyclonal to GPCR GPR48/LGR4
<b>Host species</b>	Rabbit
<b>Tested applications</b>	<b>Suitable for:</b> WB
<b>Species reactivity</b>	<b>Reacts with:</b> Human
<b>Immunogen</b>	Synthetic peptide. This information is proprietary to Abcam and/or its suppliers.
<b>Positive control</b>	Jurkat cell extract
<b>General notes</b>	<p>The Life Science industry has been in the grips of a reproducibility crisis for a number of years. Abcam is leading the way in addressing this with our range of recombinant monoclonal antibodies and knockout edited cell lines for gold-standard validation. Please check that this product meets your needs before purchasing.</p> <p>If you have any questions, special requirements or concerns, please send us an inquiry and/or contact our Support team ahead of purchase. Recommended alternatives for this product can be found below, along with publications, customer reviews and Q&amp;As</p>

### Properties

<b>Form</b>	Liquid
<b>Storage instructions</b>	Shipped at 4°C. Upon delivery aliquot and store at -20°C. Avoid freeze / thaw cycles.
<b>Storage buffer</b>	<p>pH: 7.40</p> <p>Preservative: 0.02% Sodium azide</p> <p>Constituents: 50% Glycerol (glycerin, glycerine), 0.87% Sodium chloride, PBS</p> <p>Without Mg2+ and Ca2+</p>
<b>Purity</b>	Immunogen affinity purified
<b>Purification notes</b>	Affinity-purified from rabbit antiserum by affinity-chromatography using epitope-specific immunogen.
<b>Clonality</b>	Polyclonal
<b>Isotype</b>	IgG

## Applications

### The Abpromise guarantee

Our **Abpromise guarantee** covers the use of ab75501 in the following tested applications.

The application notes include recommended starting dilutions; optimal dilutions/concentrations should be determined by the end user.

Application	Abreviews	Notes
WB		1/500 - 1/1000. Detects a band of approximately 104 kDa (predicted molecular weight: 104 kDa).

## Target

### Function

Orphan receptor.

### Tissue specificity

Expressed in multiple steroidogenic tissues: placenta, ovary, testis and adrenal. Expressed also in spinal cord, thyroid, stomach, trachea, heart, pancreas, kidney, prostate and spleen.

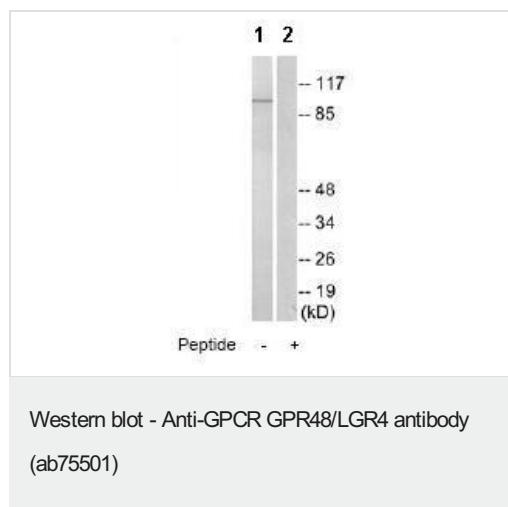
### Sequence similarities

Belongs to the G-protein coupled receptor 1 family.  
Contains 15 LRR (leucine-rich) repeats.  
Contains 1 LRRNT domain.

### Cellular localization

Cell membrane.

## Images



**All lanes :** Anti-GPCR GPR48/LGR4 antibody (ab75501) at 1/500 dilution

**Lane 1 :** Jurkat cell extract

**Lane 2 :** Jurkat cell extract with immunising peptide at 10 µg

Lysates/proteins at 30 µg per lane.

**Predicted band size:** 104 kDa

**Observed band size:** 104 kDa

**Please note:** All products are "FOR RESEARCH USE ONLY. NOT FOR USE IN DIAGNOSTIC PROCEDURES"

## Our Abpromise to you: Quality guaranteed and expert technical support

- Replacement or refund for products not performing as stated on the datasheet
- Valid for 12 months from date of delivery
- Response to your inquiry within 24 hours
- We provide support in Chinese, English, French, German, Japanese and Spanish
- Extensive multi-media technical resources to help you

- We investigate all quality concerns to ensure our products perform to the highest standards

If the product does not perform as described on this datasheet, we will offer a refund or replacement. For full details of the Abpromise, please visit <https://www.abcam.com/abpromise> or contact our technical team.

#### **Terms and conditions**

---

- Guarantee only valid for products bought direct from Abcam or one of our authorized distributors