


Product datasheet

Anti-GRAMD1C antibody ab121365

3 Images

Overview

| | |
|----------------------------|---|
| Product name | Anti-GRAMD1C antibody |
| Description | Rabbit polyclonal to GRAMD1C |
| Host species | Rabbit |
| Tested applications | Suitable for: ICC/IF, IHC-P, WB |
| Species reactivity | Reacts with: Human Predicted to work with: Orangutan  |
| Immunogen | Recombinant fragment, corresponding to amino acids 452-541 of Human GRAMD1C (Q8IYS0). |
| Positive control | Human smooth muscle tissue; RT4, U251 MG, Human liver and tonsil lysates. |
| General notes | <p>The Life Science industry has been in the grips of a reproducibility crisis for a number of years. Abcam is leading the way in addressing this with our range of recombinant monoclonal antibodies and knockout edited cell lines for gold-standard validation. Please check that this product meets your needs before purchasing.</p> <p>If you have any questions, special requirements or concerns, please send us an inquiry and/or contact our Support team ahead of purchase. Recommended alternatives for this product can be found below, along with publications, customer reviews and Q&As</p> |

Properties

| | |
|-----------------------------|---|
| Form | Liquid |
| Storage instructions | Shipped at 4°C. Upon delivery aliquot and store at -20°C. Avoid repeated freeze / thaw cycles. |
| Storage buffer | pH: 7.20 Preservative: 0.02% Sodium azide Constituents: 40% Glycerol (glycerin, glycerine), 59% PBS |
| Purity | Immunogen affinity purified |
| Clonality | Polyclonal |
| Isotype | IgG |

Applications

The **Abpromise guarantee** Our **Abpromise guarantee** covers the use of ab121365 in the following tested applications.

The application notes include recommended starting dilutions; optimal dilutions/concentrations should be determined by the end user.

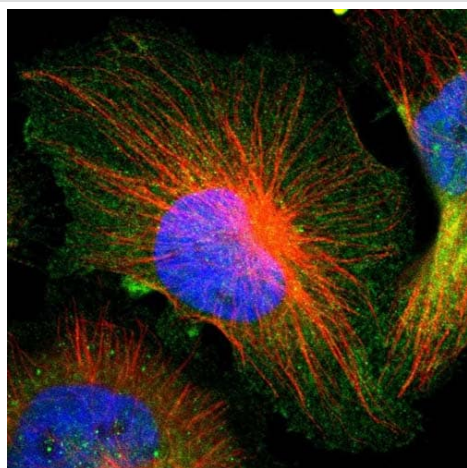
| Application | Abreviews | Notes |
|-------------|-----------|---|
| ICC/IF | | Use a concentration of 1 - 4 µg/ml. Recommend PFA Fixation and Triton X-100 treatment |
| IHC-P | | 1/200 - 1/500. Perform heat mediated antigen retrieval with citrate buffer pH 6 before commencing with IHC staining protocol. |
| WB | | Use a concentration of 0.04 - 0.4 µg/ml. |

Target

Sequence similarities Contains 1 GRAM domain.

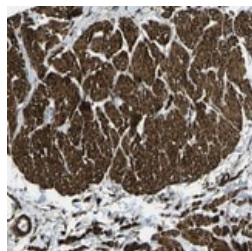
Cellular localization Membrane.

Images



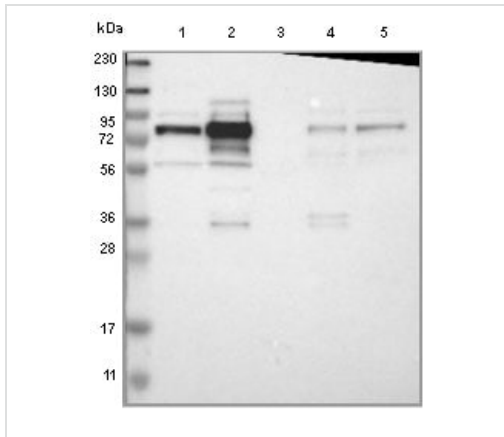
Immunocytochemistry/ Immunofluorescence - Anti-GRAMD1C antibody (ab121365)

Immunofluorescent staining of Human cell line U-251MG shows positivity in plasma membrane and cytoplasm. Recommended concentration of ab121365 1-4 µg/ml. Cells treated with PFA/Triton X-100.



Immunohistochemistry (Formalin/PFA-fixed paraffin-embedded sections) - Anti-GRAMD1C antibody (ab121365)

ab121365 at 1/500 dilution staining GRAMD1C in Paraffin-embedded Human Smooth muscle tissue by Immunohistochemistry.



Western blot - Anti-GRAMD1C antibody (ab121365)

All lanes : Anti-GRAMD1C antibody (ab121365) at 1/250 dilution

Lane 1 : RT4 lysate

Lane 2 : U251 MG lysate

Lane 3 : Human plasma

Lane 4 : Human liver lysate

Lane 5 : Human tonsil lysate

Developed using the ECL technique.

Please note: All products are "FOR RESEARCH USE ONLY. NOT FOR USE IN DIAGNOSTIC PROCEDURES"

Our Abpromise to you: Quality guaranteed and expert technical support

- Replacement or refund for products not performing as stated on the datasheet
- Valid for 12 months from date of delivery
- Response to your inquiry within 24 hours
- We provide support in Chinese, English, French, German, Japanese and Spanish
- Extensive multi-media technical resources to help you
- We investigate all quality concerns to ensure our products perform to the highest standards

If the product does not perform as described on this datasheet, we will offer a refund or replacement. For full details of the Abpromise, please visit <https://www.abcam.com/abpromise> or contact our technical team.

Terms and conditions

- Guarantee only valid for products bought direct from Abcam or one of our authorized distributors