


## Product datasheet

### Anti-GRK1 antibody [EPR2039(2)] ab108502

Recombinant **RabMAb**

[2 References](#) [2 Images](#)

#### Overview

<b>Product name</b>	Anti-GRK1 antibody [EPR2039(2)]
<b>Description</b>	Rabbit monoclonal [EPR2039(2)] to GRK1
<b>Host species</b>	Rabbit
<b>Tested applications</b>	<b>Suitable for:</b> WB <b>Unsuitable for:</b> Flow Cyt, ICC/IF, IHC-P or IP
<b>Species reactivity</b>	<b>Reacts with:</b> Human <b>Predicted to work with:</b> Mouse, Rat 
<b>Immunogen</b>	Synthetic peptide. This information is proprietary to Abcam and/or its suppliers.
<b>Positive control</b>	Y79 and JAR cell lysates.
<b>General notes</b>	<p>This product is a recombinant monoclonal antibody, which offers several advantages including:</p> <ul style="list-style-type: none"> <li>- High batch-to-batch consistency and reproducibility</li> <li>- Improved sensitivity and specificity</li> <li>- Long-term security of supply</li> <li>- Animal-free production</li> </ul> <p>For more information <a href="#">see here</a>.</p> <p>Our RabMAb<sup>®</sup> technology is a patented hybridoma-based technology for making rabbit monoclonal antibodies. For details on our patents, please refer to <a href="#">RabMAb<sup>®</sup> patents</a>.</p>

#### Properties

<b>Form</b>	Liquid
<b>Storage instructions</b>	Shipped at 4°C. Store at -20°C. Stable for 12 months at -20°C.
<b>Storage buffer</b>	pH: 7.20 Preservative: 0.05% Sodium azide Constituents: 0.1% BSA, 40% Glycerol (glycerin, glycerine), 9.85% Tris glycine, 50% Tissue culture supernatant
<b>Purity</b>	Protein A purified
<b>Clonality</b>	Monoclonal
<b>Clone number</b>	EPR2039(2)

Isotype

IgG

## Applications

### The Abpromise guarantee

Our **Abpromise guarantee** covers the use of ab108502 in the following tested applications.

The application notes include recommended starting dilutions; optimal dilutions/concentrations should be determined by the end user.

Application	Abreviews	Notes
WB		1/1000 - 1/10000. Detects a band of approximately 60 kDa (predicted molecular weight: 60 kDa).

### Application notes

Is unsuitable for Flow Cyt, ICC/IF, IHC-P or IP.

## Target

### Function

Retina-specific kinase involved in the signal turnoff via phosphorylation of rhodopsin (RHO), the G protein- coupled receptor that initiates the phototransduction cascade. This rapid desensitization is essential for scotopic vision and permits rapid adaptation to changes in illumination.

### Tissue specificity

Retinal-specific. Expressed in rods and cones cells.

### Involvement in disease

Night blindness, congenital stationary, Oguchi type 2

### Sequence similarities

Belongs to the protein kinase superfamily. AGC Ser/Thr protein kinase family. GPRK subfamily. Contains 1 AGC-kinase C-terminal domain. Contains 1 protein kinase domain. Contains 1 RGS domain.

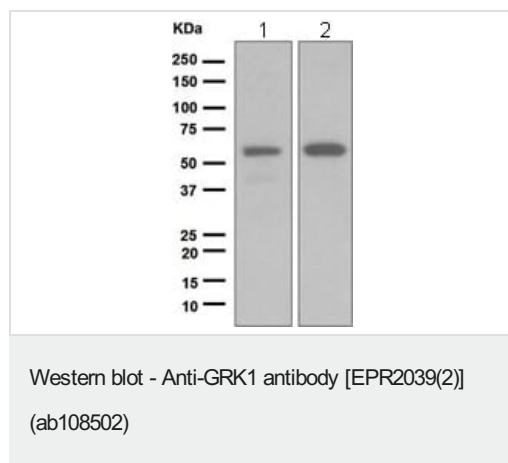
### Post-translational modifications

Autophosphorylated, Ser-21 is a minor site of autophosphorylation compared to Ser-491 and Thr-492 (By similarity). Phosphorylation at Ser-21 is regulated by light and activated by cAMP. Farnesylation is required for full activity.

### Cellular localization

Membrane.

## Images



**All lanes :** Anti-GRK1 antibody [EPR2039(2)] (ab108502) at 1/1000 dilution

**Lane 1 :** Y79 cell lysate

**Lane 2 :** JAR cell lysate

Lysates/proteins at 10 µg per lane.

**Predicted band size:** 60 kDa

**Observed band size:** 60 kDa

### Why choose a recombinant antibody?



**Research with confidence**  
Consistent and reproducible results



**Long-term and scalable supply**  
Recombinant technology



**Success from the first experiment**  
Confirmed specificity



**Ethical standards compliant**  
Animal-free production

Anti-GRK1 antibody [EPR2039(2)] (ab108502)

**Please note:** All products are "FOR RESEARCH USE ONLY. NOT FOR USE IN DIAGNOSTIC PROCEDURES"

### Our Abpromise to you: Quality guaranteed and expert technical support

---

- Replacement or refund for products not performing as stated on the datasheet
- Valid for 12 months from date of delivery
- Response to your inquiry within 24 hours
- We provide support in Chinese, English, French, German, Japanese and Spanish
- Extensive multi-media technical resources to help you
- We investigate all quality concerns to ensure our products perform to the highest standards

If the product does not perform as described on this datasheet, we will offer a refund or replacement. For full details of the Abpromise, please visit <https://www.abcam.com/abpromise> or contact our technical team.

### Terms and conditions

---

- Guarantee only valid for products bought direct from Abcam or one of our authorized distributors