


Product datasheet

Anti-GRK6 antibody [EPR2046(2)] ab109302

Recombinant RabMAb

[2 References](#) [2 Images](#)

Overview

Product name	Anti-GRK6 antibody [EPR2046(2)]
Description	Rabbit monoclonal [EPR2046(2)] to GRK6
Host species	Rabbit
Tested applications	Suitable for: WB Unsuitable for: Flow Cyt, IHC-P or IP
Species reactivity	Reacts with: Human Predicted to work with: Mouse 
Immunogen	Synthetic peptide. This information is proprietary to Abcam and/or its suppliers.
Positive control	U937 cell lysate, Ramos cell lysate, Jurkat cell lysate, K562 cell lysate.
General notes	<p>This product is a recombinant monoclonal antibody, which offers several advantages including:</p> <ul style="list-style-type: none"> - High batch-to-batch consistency and reproducibility - Improved sensitivity and specificity - Long-term security of supply - Animal-free production <p>For more information see here.</p> <p>Our RabMAb[®] technology is a patented hybridoma-based technology for making rabbit monoclonal antibodies. For details on our patents, please refer to RabMAb[®] patents.</p> <p>Rat: We have preliminary internal testing data to indicate this antibody may not react with this species. Please contact us for more information.</p>

Properties

Form	Liquid
Storage instructions	Shipped at 4°C. Store at -20°C. Stable for 12 months at -20°C.
Storage buffer	pH: 7.20 Preservative: 0.05% Sodium azide Constituents: 0.1% BSA, 40% Glycerol (glycerin, glycerine), 9.85% Tris glycine, 50% Tissue culture supernatant
Purity	Protein A purified

Clonality	Monoclonal
Clone number	EPR2046(2)
Isotype	IgG

Applications

The Abpromise guarantee Our **Abpromise guarantee** covers the use of ab109302 in the following tested applications. The application notes include recommended starting dilutions; optimal dilutions/concentrations should be determined by the end user.

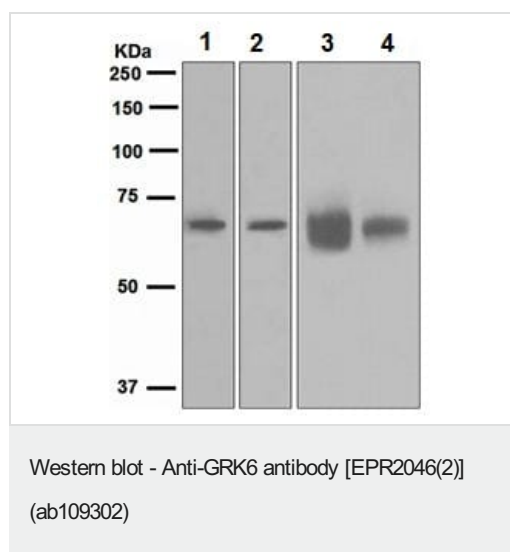
Application	Abreviews	Notes
WB		1/1000 - 1/10000. Predicted molecular weight: 66 kDa.

Application notes Is unsuitable for Flow Cyt, IHC-P or IP.

Target

Function	Specifically phosphorylates the activated forms of G protein-coupled receptors.
Tissue specificity	Widely expressed.
Sequence similarities	Belongs to the protein kinase superfamily. AGC Ser/Thr protein kinase family. GPRK subfamily. Contains 1 AGC-kinase C-terminal domain. Contains 1 protein kinase domain. Contains 1 RGS domain.
Post-translational modifications	It is uncertain whether palmitoylation is on Cys-561 and/or Cys-562 and/or Cys-565.
Cellular localization	Membrane.
Form	There are 2 isoforms produced by alternative splicing.

Images



All lanes : Anti-GRK6 antibody [EPR2046(2)] (ab109302) at 1/1000 dilution

Lane 1 : U937 cell lysate
Lane 2 : Ramos cell lysate
Lane 3 : Jurkat cell lysate
Lane 4 : K562 cell lysate

Lysates/proteins at 10 µg per lane.

Predicted band size: 66 kDa

Why choose a recombinant antibody?



Research with confidence
Consistent and reproducible results



Long-term and scalable supply
Recombinant technology



Success from the first experiment
Confirmed specificity



Ethical standards compliant
Animal-free production

Anti-GRK6 antibody [EPR2046(2)] (ab109302)

Please note: All products are "FOR RESEARCH USE ONLY. NOT FOR USE IN DIAGNOSTIC PROCEDURES"

Our Abpromise to you: Quality guaranteed and expert technical support

- Replacement or refund for products not performing as stated on the datasheet
- Valid for 12 months from date of delivery
- Response to your inquiry within 24 hours
- We provide support in Chinese, English, French, German, Japanese and Spanish
- Extensive multi-media technical resources to help you
- We investigate all quality concerns to ensure our products perform to the highest standards

If the product does not perform as described on this datasheet, we will offer a refund or replacement. For full details of the Abpromise, please visit <https://www.abcam.com/abpromise> or contact our technical team.

Terms and conditions

- Guarantee only valid for products bought direct from Abcam or one of our authorized distributors