


Product datasheet

Anti-GRLF1 antibody ab85950

★★★★★ [1 Abreviews](#) [3 Images](#)

Overview

Product name	Anti-GRLF1 antibody
Description	Rabbit polyclonal to GRLF1
Host species	Rabbit
Tested applications	Suitable for: WB, IP
Species reactivity	Reacts with: Mouse, Human Predicted to work with: Rat, Horse, Guinea pig, Cow, Dog, Pig, Chimpanzee, Ferret, Rhesus monkey, Gorilla, Orangutan 
Immunogen	Synthetic peptide corresponding to Human GRLF1 aa 1200-1300. Database link: Q9NRY4
Positive control	WB: HeLa, 293T, CT26-WT, 4T1 and Renca whole cell lysates. IP: HeLa whole cell lysate.
General notes	<p>The Life Science industry has been in the grips of a reproducibility crisis for a number of years. Abcam is leading the way in addressing this with our range of recombinant monoclonal antibodies and knockout edited cell lines for gold-standard validation. Please check that this product meets your needs before purchasing.</p> <p>If you have any questions, special requirements or concerns, please send us an inquiry and/or contact our Support team ahead of purchase. Recommended alternatives for this product can be found below, along with publications, customer reviews and Q&As</p>

Properties

Form	Liquid
Storage instructions	Shipped at 4°C. Upon delivery aliquot and store at -20°C. Avoid freeze / thaw cycles.
Storage buffer	pH: 6.8 Preservative: 0.09% Sodium azide Constituents: Tris buffered saline, 0.1% BSA
Purity	Immunogen affinity purified
Purification notes	ab85950 was affinity purified using an epitope specific to GRLF1 immobilized on solid support.
Clonality	Polyclonal
Isotype	IgG

Applications

The Abpromise guarantee

Our **Abpromise guarantee** covers the use of ab85950 in the following tested applications.

The application notes include recommended starting dilutions; optimal dilutions/concentrations should be determined by the end user.

Application	Abreviews	Notes
WB	★★★★★ (1)	1/2000 - 1/10000. Predicted molecular weight: 172 kDa.
IP		Use at 2-5 µg/mg of lysate.

Target

Function

Represses transcription of the glucocorticoid receptor by binding to the cis-acting regulatory sequence 5'-GAGAAAAGAACTGGAGAACTC-3'. May participate in the regulation of retinal development and degeneration. May transduce signals from p21-ras to the nucleus, acting via the ras GTPase-activating protein (GAP). May also act as a tumor suppressor.

Sequence similarities

Contains 4 FF domains.
Contains 1 Rho-GAP domain.

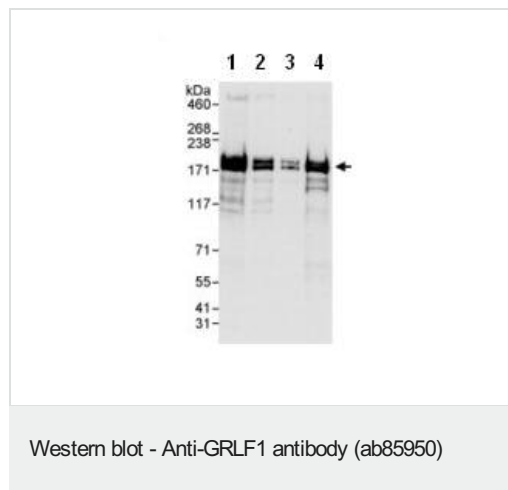
Post-translational modifications

Tyrosine phosphorylated.
Phosphorylated upon DNA damage, probably by ATM or ATR.

Cellular localization

Cytoplasm. Nucleus.

Images



All lanes : Anti-GRLF1 antibody (ab85950) at 0.04 µg/ml

Lane 1 : HeLa whole cell lysate at 50 µg

Lane 2 : HeLa whole cell lysate at 15 µg

Lane 3 : HeLa whole cell lysate at 5 µg

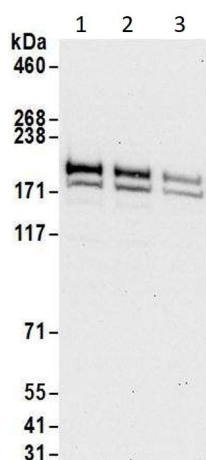
Lane 4 : 293T whole cell lysate at 50 µg

Developed using the ECL technique.

Predicted band size: 172 kDa

Observed band size: 172 kDa

Exposure time: 10 seconds



Western blot - Anti-GRLF1 antibody (ab85950)

All lanes : Anti-GRLF1 antibody (ab85950) at 1/2000 dilution

Lane 1 : CT26-WT (Mouse colon carcinoma cell - Wild Type) whole cell lysate

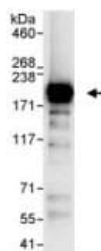
Lane 2 : 4T1 (Mouse mammary gland cells) whole cell lysate

Lane 3 : Renca (Mouse renal carcinoma cells) whole cell lysate

Lysates/proteins at 50 µg per lane.

Predicted band size: 172 kDa

Exposure time: 30 seconds



Immunoprecipitation - Anti-GRLF1 antibody (ab85950)

Detection of human GRLF1 in Immunoprecipitates of whole cell lysate from HeLa cells (1 mg for IP, 20% of IP loaded) using ab85950 at 3 µg/mg lysate for IP, and at 1 µg/ml for subsequent Western blot.

Detection: Chemiluminescence with an exposure time of 3 seconds.

Please note: All products are "FOR RESEARCH USE ONLY. NOT FOR USE IN DIAGNOSTIC PROCEDURES"

Our Abpromise to you: Quality guaranteed and expert technical support

- Replacement or refund for products not performing as stated on the datasheet
- Valid for 12 months from date of delivery
- Response to your inquiry within 24 hours
- We provide support in Chinese, English, French, German, Japanese and Spanish
- Extensive multi-media technical resources to help you
- We investigate all quality concerns to ensure our products perform to the highest standards

If the product does not perform as described on this datasheet, we will offer a refund or replacement. For full details of the Abpromise, please visit <https://www.abcam.com/abpromise> or contact our technical team.

Terms and conditions

- Guarantee only valid for products bought direct from Abcam or one of our authorized distributors