

## Product datasheet

# Anti-GRLF1 (phospho Y1105) antibody ab182636

[1 References](#) [1 Image](#)

### Overview

---

<b>Product name</b>	Anti-GRLF1 (phospho Y1105) antibody
<b>Description</b>	Rabbit polyclonal to GRLF1 (phospho Y1105)
<b>Host species</b>	Rabbit
<b>Tested applications</b>	<b>Suitable for:</b> WB
<b>Species reactivity</b>	<b>Reacts with:</b> Mouse
<b>Immunogen</b>	Synthetic peptide corresponding to Human GRLF1 (phospho Y1105) conjugated to Keyhole Limpet Haemocyanin (KLH). (N-I-Y(p)-S-V). Database link: <a href="#">Q9NRY4</a>
<b>Positive control</b>	Mouse brain tissue lysate.
<b>General notes</b>	<p>The Life Science industry has been in the grips of a reproducibility crisis for a number of years. Abcam is leading the way in addressing this with our range of recombinant monoclonal antibodies and knockout edited cell lines for gold-standard validation. Please check that this product meets your needs before purchasing.</p> <p>If you have any questions, special requirements or concerns, please send us an inquiry and/or contact our Support team ahead of purchase. Recommended alternatives for this product can be found below, along with publications, customer reviews and Q&amp;As</p>

### Properties

---

<b>Form</b>	Liquid
<b>Storage instructions</b>	Shipped at 4°C. Store at +4°C short term (1-2 weeks). Upon delivery aliquot. Store at -20°C long term. Avoid freeze / thaw cycle.
<b>Storage buffer</b>	pH: 7.40 Preservative: 0.02% Sodium azide Constituents: 50% Glycerol (glycerin, glycerine), 49% PBS, 0.88% Sodium chloride  Note: PBS without Mg <sup>2+</sup> and Ca <sup>2+</sup> .
<b>Purity</b>	Immunogen affinity purified
<b>Purification notes</b>	ab182636 was purified by affinity-chromatography using epitope-specific phosphopeptide. Non-phospho specific antibodies were removed by chromatography using non-phosphopeptide.
<b>Clonality</b>	Polyclonal

Isotype IgG

## Applications

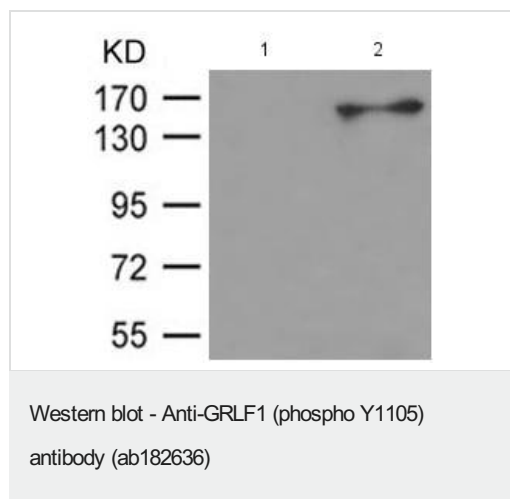
**The Abpromise guarantee** Our **Abpromise guarantee** covers the use of ab182636 in the following tested applications. The application notes include recommended starting dilutions; optimal dilutions/concentrations should be determined by the end user.

Application	Abreviews	Notes
WB		1/500 - 1/1000. Predicted molecular weight: 171 kDa.

## Target

<b>Function</b>	Represses transcription of the glucocorticoid receptor by binding to the cis-acting regulatory sequence 5'-GAGAAAAGAAACTGGAGAAACTC-3'. May participate in the regulation of retinal development and degeneration. May transduce signals from p21-ras to the nucleus, acting via the ras GTPase-activating protein (GAP). May also act as a tumor suppressor.
<b>Sequence similarities</b>	Contains 4 FF domains. Contains 1 Rho-GAP domain.
<b>Post-translational modifications</b>	Tyrosine phosphorylated. Phosphorylated upon DNA damage, probably by ATM or ATR.
<b>Cellular localization</b>	Cytoplasm. Nucleus.

## Images



**All lanes** : Anti-GRLF1 (phospho Y1105) antibody (ab182636) at 1/500 dilution

**Lane 1** : Mouse brain tissue lysate with immunizing peptide

**Lane 2** : Mouse brain tissue lysate

**Predicted band size:** 171 kDa

**Please note:** All products are "FOR RESEARCH USE ONLY. NOT FOR USE IN DIAGNOSTIC PROCEDURES"

## Our Abpromise to you: Quality guaranteed and expert technical support

- Replacement or refund for products not performing as stated on the datasheet
- Valid for 12 months from date of delivery

- Response to your inquiry within 24 hours
- We provide support in Chinese, English, French, German, Japanese and Spanish
- Extensive multi-media technical resources to help you
- We investigate all quality concerns to ensure our products perform to the highest standards

If the product does not perform as described on this datasheet, we will offer a refund or replacement. For full details of the Abpromise, please visit <https://www.abcam.com/abpromise> or contact our technical team.

### **Terms and conditions**

---

- Guarantee only valid for products bought direct from Abcam or one of our authorized distributors