

## Product datasheet

# Anti-GRP94 antibody ab18055

★★★★☆ [2 Abreviews](#) [7 References](#) [2 Images](#)

### Overview

---

<b>Product name</b>	Anti-GRP94 antibody
<b>Description</b>	Rabbit polyclonal to GRP94
<b>Host species</b>	Rabbit
<b>Tested applications</b>	<b>Suitable for:</b> ICC/IF, WB
<b>Species reactivity</b>	<b>Reacts with:</b> Human, Monkey <b>Does not react with:</b> Mouse, Rat
<b>Immunogen</b>	Synthetic peptide (Human) (Internal sequence).
<b>General notes</b>	<p>The Life Science industry has been in the grips of a reproducibility crisis for a number of years. Abcam is leading the way in addressing this with our range of recombinant monoclonal antibodies and knockout edited cell lines for gold-standard validation. Please check that this product meets your needs before purchasing.</p> <p>If you have any questions, special requirements or concerns, please send us an inquiry and/or contact our Support team ahead of purchase. Recommended alternatives for this product can be found below, along with publications, customer reviews and Q&amp;As</p>

### Properties

---

<b>Form</b>	Liquid
<b>Storage instructions</b>	Shipped at 4°C. Store at +4°C short term (1-2 weeks). Upon delivery aliquot. Store at -20°C or -80°C. Avoid freeze / thaw cycle.
<b>Storage buffer</b>	Preservative: 0.01% Sodium azide Constituent: Whole serum
<b>Purity</b>	Whole antiserum
<b>Clonality</b>	Polyclonal
<b>Isotype</b>	IgG

### Applications

---

**The Abpromise guarantee** Our **Abpromise guarantee** covers the use of ab18055 in the following tested applications. The application notes include recommended starting dilutions; optimal dilutions/concentrations should be determined by the end user.

Application	Abreviews	Notes
ICC/IF		
WB	★★★★★ (2)	

### Application notes

ICC: 1/100 - 1/400.

IF: 1/100 - 1/400.

WB: 1/500 - 1/1000. Detects a band of approximately 100 kDa (predicted molecular weight: 94 kDa).

Not tested in other applications.

Optimal dilutions/concentrations should be determined by the end user.

Works in ICC/IF with methanol-fixed and 4% paraformaldehyde fixed cells.

### Target

#### Function

Molecular chaperone that functions in the processing and transport of secreted proteins. Functions in endoplasmic reticulum associated degradation (ERAD). Has ATPase activity.

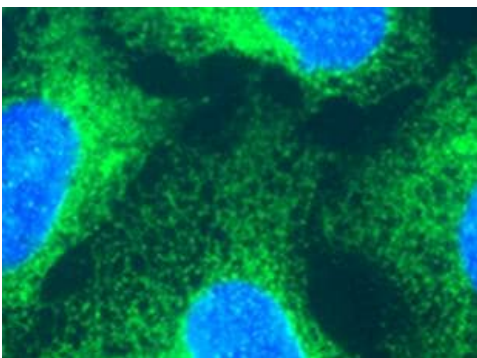
#### Sequence similarities

Belongs to the heat shock protein 90 family.

#### Cellular localization

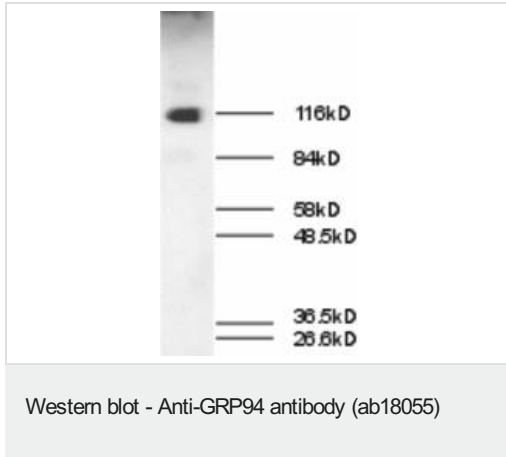
Endoplasmic reticulum lumen. Melanosome. Identified by mass spectrometry in melanosome fractions from stage I to stage IV.

### Images



Methanol-fixed HEK293 cells stained at 1/200 with ab18055 followed by FITC conjugated secondary.

Immunocytochemistry/ Immunofluorescence - Anti-GRP94 antibody (ab18055)



Western blot of soluble fraction of monkey brain stained at 1/1000 with ab18055, visualised with HRP-conjugated secondary and ECL.  
Western blot of soluble fraction of monkey brain stained at 1/1000 with ab18055, visualised with HRP-conjugated secondary and ECL.

**Please note:** All products are "FOR RESEARCH USE ONLY. NOT FOR USE IN DIAGNOSTIC PROCEDURES"

### Our Abpromise to you: Quality guaranteed and expert technical support

---

- Replacement or refund for products not performing as stated on the datasheet
- Valid for 12 months from date of delivery
- Response to your inquiry within 24 hours
- We provide support in Chinese, English, French, German, Japanese and Spanish
- Extensive multi-media technical resources to help you
- We investigate all quality concerns to ensure our products perform to the highest standards

If the product does not perform as described on this datasheet, we will offer a refund or replacement. For full details of the Abpromise, please visit <https://www.abcam.com/abpromise> or contact our technical team.

### Terms and conditions

---

- Guarantee only valid for products bought direct from Abcam or one of our authorized distributors