

# Anti-GSDMD antibody - C-terminal ab228824

[1 References](#) [2 Images](#)

### Overview

---

<b>Product name</b>	Anti-GSDMD antibody - C-terminal
<b>Description</b>	Rabbit polyclonal to GSDMD - C-terminal
<b>Host species</b>	Rabbit
<b>Tested applications</b>	<b>Suitable for:</b> WB, IP
<b>Species reactivity</b>	<b>Reacts with:</b> Human
<b>Immunogen</b>	Synthetic peptide within Human GSDMD aa 434-484 (C terminal). The exact sequence is proprietary. Database link: <a href="#">P57764</a>
<b>Positive control</b>	WB: Jurkat whole cell lysate ( <a href="#">ab7899</a> ). IP: Jurkat whole cell lysate ( <a href="#">ab7899</a> ).
<b>General notes</b>	<p>The Life Science industry has been in the grips of a reproducibility crisis for a number of years. Abcam is leading the way in addressing this with our range of recombinant monoclonal antibodies and knockout edited cell lines for gold-standard validation. Please check that this product meets your needs before purchasing.</p> <p>If you have any questions, special requirements or concerns, please send us an inquiry and/or contact our Support team ahead of purchase. Recommended alternatives for this product can be found below, along with publications, customer reviews and Q&amp;As</p>

### Properties

---

<b>Form</b>	Liquid
<b>Storage instructions</b>	Shipped at 4°C. Store at +4°C short term (1-2 weeks). Upon delivery aliquot. Store at -20°C. Avoid freeze / thaw cycle.
<b>Storage buffer</b>	pH: 6.8 Preservative: 0.09% Sodium azide Constituents: Tris buffered saline, 0.1% BSA
<b>Purity</b>	Immunogen affinity purified
<b>Purification notes</b>	ab228824 was affinity purified using an epitope specific to GSDMD immobilized on solid support.
<b>Clonality</b>	Polyclonal
<b>Isotype</b>	IgG

## Applications

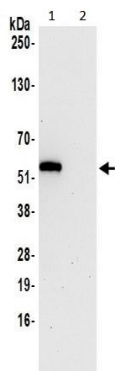
**The Abpromise guarantee** Our **Abpromise guarantee** covers the use of ab228824 in the following tested applications. The application notes include recommended starting dilutions; optimal dilutions/concentrations should be determined by the end user.

Application	Abreviews	Notes
WB		1/1000. Predicted molecular weight: 52 kDa.
IP		Use at an assay dependent concentration. Use at 20 µl/mg lysate.

## Target

**Sequence similarities** Belongs to the gasdermin family.

## Images



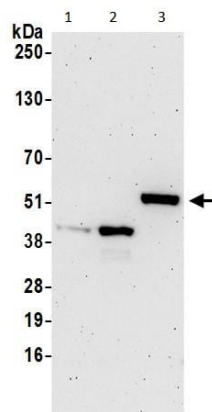
GSDMD was immunoprecipitated from Jurkat (Human T cell leukemia cell line from peripheral blood) whole cell lysate (1 mg for IP, 20% of IP loaded) with ab228824 at 20 µl per reaction. Western blot was performed from the immunoprecipitate using ab228824 at 1/100 dilution.

**Lane 1:** ab228824 IP in Jurkat whole cell lysate.

**Lane 2:** Control IgG IP in Jurkat whole cell lysate.

Detection: Chemiluminescence with exposure time of 30 seconds.

Immunoprecipitation - Anti-GSDMD antibody - C-terminal (ab228824)



Western blot - Anti-GSDMD antibody - C-terminal (ab228824)

**All lanes :** Anti-GSDMD antibody - C-terminal (ab228824) at 1/1000 dilution

**Lane 1 :** HeLa (human epithelial cell line from cervix adenocarcinoma) whole cell lysate

**Lane 2 :** HEK-293T (human epithelial cell line from embryonic kidney transformed with large T antigen) whole cell lysate

**Lane 3 :** Jurkat (human T cell leukemia cell line from peripheral blood) whole cell lysate

Lysates/proteins at 50 µg per lane.

Developed using the ECL technique.

**Predicted band size:** 52 kDa

**Exposure time:** 3 minutes

Lysates were prepared using NETN lysis buffer.

**Please note:** All products are "FOR RESEARCH USE ONLY. NOT FOR USE IN DIAGNOSTIC PROCEDURES"

### Our Abpromise to you: Quality guaranteed and expert technical support

- Replacement or refund for products not performing as stated on the datasheet
- Valid for 12 months from date of delivery
- Response to your inquiry within 24 hours
- We provide support in Chinese, English, French, German, Japanese and Spanish
- Extensive multi-media technical resources to help you
- We investigate all quality concerns to ensure our products perform to the highest standards

If the product does not perform as described on this datasheet, we will offer a refund or replacement. For full details of the Abpromise, please visit <https://www.abcam.com/abpromise> or contact our technical team.

### Terms and conditions

- Guarantee only valid for products bought direct from Abcam or one of our authorized distributors