


## Product datasheet

# Anti-GSK3 alpha (phospho S21) antibody ab28808

[5 References](#) [3 Images](#)

### Overview

<b>Product name</b>	Anti-GSK3 alpha (phospho S21) antibody
<b>Description</b>	Rabbit polyclonal to GSK3 alpha (phospho S21)
<b>Host species</b>	Rabbit
<b>Tested applications</b>	<b>Suitable for:</b> ICC/IF, WB, IHC-P
<b>Species reactivity</b>	<b>Reacts with:</b> Human <b>Predicted to work with:</b> Rat 
<b>Immunogen</b>	Synthetic peptide corresponding to GSK3 alpha (phospho S21).
<b>General notes</b>	<p>The Life Science industry has been in the grips of a reproducibility crisis for a number of years. Abcam is leading the way in addressing this with our range of recombinant monoclonal antibodies and knockout edited cell lines for gold-standard validation. Please check that this product meets your needs before purchasing.</p> <p>If you have any questions, special requirements or concerns, please send us an inquiry and/or contact our Support team ahead of purchase. Recommended alternatives for this product can be found below, along with publications, customer reviews and Q&amp;As</p>

### Properties

<b>Form</b>	Liquid
<b>Storage instructions</b>	Shipped at 4°C. Upon delivery aliquot and store at -20°C. Avoid freeze / thaw cycles.
<b>Storage buffer</b>	pH: 7.40 Preservative: 0.02% Sodium azide Constituents: PBS, 50% Glycerol (glycerin, glycerine), 0.87% Sodium chloride
<b>Purity</b>	Immunogen affinity purified
<b>Clonality</b>	Polyclonal
<b>Isotype</b>	IgG

### Applications

**The Abpromise guarantee** Our **Abpromise guarantee** covers the use of ab28808 in the following tested applications. The application notes include recommended starting dilutions; optimal dilutions/concentrations should be determined by the end user.

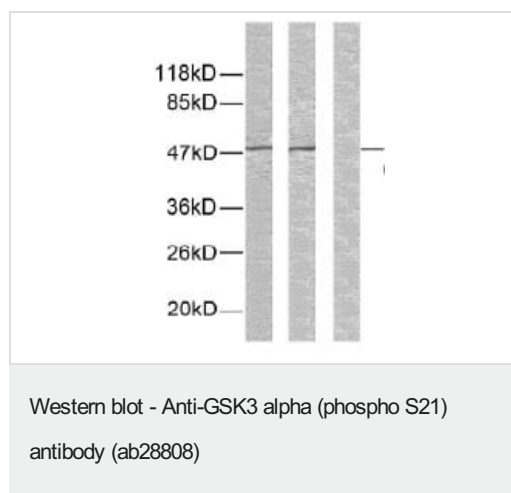
Application	Abreviews	Notes
ICC/IF		Use a concentration of 1 - 5 µg/ml.
WB		1/500 - 1/1000. Predicted molecular weight: 50 kDa.
IHC-P		Use at an assay dependent concentration.

## Target

**Function** Implicated in the hormonal control of several regulatory proteins including glycogen synthase, MYB and the transcription factor JUN.

**Sequence similarities** Belongs to the protein kinase superfamily. CMGC Ser/Thr protein kinase family. GSK-3 subfamily. Contains 1 protein kinase domain.

## Images



**All lanes :** Anti-GSK3 alpha (phospho S21) antibody (ab28808) at 1/1000 dilution

**Lane 1 :** Extracts from ovary cancer cells.

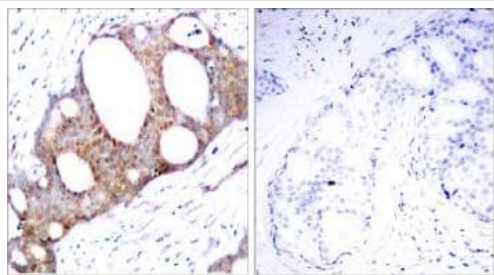
**Lane 2 :** Extracts from ovary cancer cells. with synthesised non phosphopeptide at 1 µg/ml

**Lane 3 :** Extracts from ovary cancer cells. with synthesised phosphopeptide at 1 µg/ml

Lysates/proteins at 30 µg per lane.

**Predicted band size:** 50 kDa

**Observed band size:** 50 kDa



Immunohistochemistry (Formalin/PFA-fixed paraffin-embedded sections) - Anti-GSK3 alpha (phospho S21) antibody (ab28808)

Immunohistochemical analysis of paraffin embedded breast carcinoma, using primary CDK2 (Phospho-Thr160) ab28808 at 1:100 dilution and Alkaline Phosphatase AffiniPure Goat Anti-Rabbit IgG (H+L) secondary antibody. Left: Untreated; Right: Treated with synthesized phosphopeptide.

Immunocytochemistry/ Immunofluorescence - Anti-GSK3 alpha (phospho S21) antibody (ab28808)

ICC/IF image of ab28808 stained HeLa cells. The cells were 4% PFA fixed (10 min) and then incubated in 1%BSA / 10% normal goat serum / 0.3M glycine in 0.1% PBS-Tween for 1h to permeabilise the cells and block non-specific protein-protein interactions. The cells were then incubated with the antibody (ab28808, 1µg/ml) overnight at +4°C. The secondary antibody (green) was Alexa Fluor® 488 goat anti-rabbit IgG (H+L) used at a 1/1000 dilution for 1h. Alexa Fluor® 594 WGA was used to label plasma membranes (red) at a 1/200 dilution for 1h. DAPI was used to stain the cell nuclei (blue) at a concentration of 1.43µM.

**Please note:** All products are "FOR RESEARCH USE ONLY. NOT FOR USE IN DIAGNOSTIC PROCEDURES"

### Our Abpromise to you: Quality guaranteed and expert technical support

- Replacement or refund for products not performing as stated on the datasheet
- Valid for 12 months from date of delivery
- Response to your inquiry within 24 hours
- We provide support in Chinese, English, French, German, Japanese and Spanish
- Extensive multi-media technical resources to help you
- We investigate all quality concerns to ensure our products perform to the highest standards

If the product does not perform as described on this datasheet, we will offer a refund or replacement. For full details of the Abpromise, please visit <https://www.abcam.com/abpromise> or contact our technical team.

### Terms and conditions

- Guarantee only valid for products bought direct from Abcam or one of our authorized distributors