




## Product datasheet

# Anti-GSTM2 antibody ab196503

[1 References](#) [3 Images](#)

### Overview

---

<b>Product name</b>	Anti-GSTM2 antibody
<b>Description</b>	Rabbit polyclonal to GSTM2
<b>Host species</b>	Rabbit
<b>Tested applications</b>	<b>Suitable for:</b> ICC/IF, IHC-P, WB
<b>Species reactivity</b>	<b>Reacts with:</b> Mouse, Human <b>Predicted to work with:</b> Rat, Cynomolgus monkey, Orangutan 
<b>Immunogen</b>	Recombinant full length protein corresponding to Human GSTM2 aa 1 to the C-terminus. Database link: <a href="#">P28161</a>  <a href="#">Run BLAST with</a>  <a href="#">Run BLAST with</a>
<b>Positive control</b>	Mouse testis and heart extracts, Human kidney tissue, HeLa cells.
<b>General notes</b>	<p>The Life Science industry has been in the grips of a reproducibility crisis for a number of years. Abcam is leading the way in addressing this with our range of recombinant monoclonal antibodies and knockout edited cell lines for gold-standard validation. Please check that this product meets your needs before purchasing.</p> <p>If you have any questions, special requirements or concerns, please send us an inquiry and/or contact our Support team ahead of purchase. Recommended alternatives for this product can be found below, along with publications, customer reviews and Q&amp;As</p>

### Properties

---

<b>Form</b>	Liquid
<b>Storage instructions</b>	Shipped at 4°C. Store at +4°C short term (1-2 weeks). Upon delivery aliquot. Store at -20°C long term. Avoid freeze / thaw cycle.
<b>Storage buffer</b>	pH: 7.40 Preservative: 0.02% Sodium azide Constituents: 49% PBS, 0.87% Sodium chloride, 50% Glycerol (glycerin, glycerine)  PBS is without Mg <sup>2+</sup> and Ca <sup>2+</sup>
<b>Purity</b>	Immunogen affinity purified
<b>Clonality</b>	Polyclonal
<b>Isotype</b>	IgG

## Applications

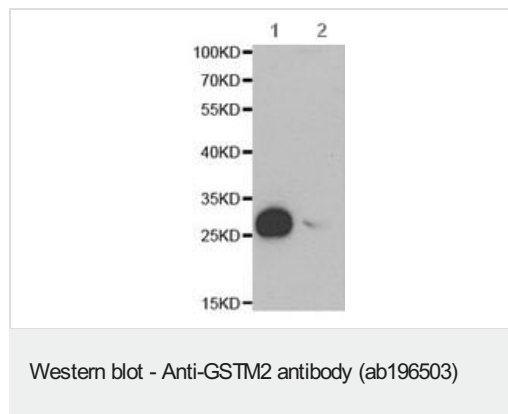
**The Abpromise guarantee** Our **Abpromise guarantee** covers the use of ab196503 in the following tested applications. The application notes include recommended starting dilutions; optimal dilutions/concentrations should be determined by the end user.

Application	Abreviews	Notes
ICC/IF		1/50 - 1/200.
IHC-P		1/50 - 1/100.
WB		1/500 - 1/2000. Predicted molecular weight: 26 kDa.

## Target

<b>Function</b>	Conjugation of reduced glutathione to a wide number of exogenous and endogenous hydrophobic electrophiles.
<b>Tissue specificity</b>	Muscle.
<b>Sequence similarities</b>	Belongs to the GST superfamily. Mu family. Contains 1 GST C-terminal domain. Contains 1 GST N-terminal domain.
<b>Cellular localization</b>	Cytoplasm.

## Images

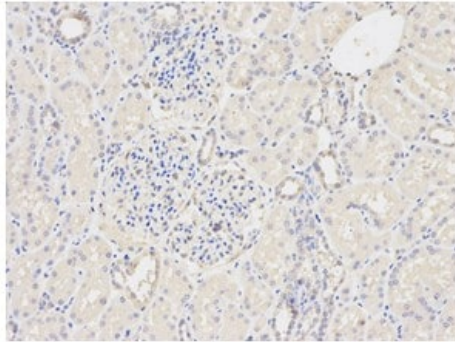


**All lanes :** Anti-GSTM2 antibody (ab196503) at 1/500 dilution

**Lane 1 :** Mouse testis extract

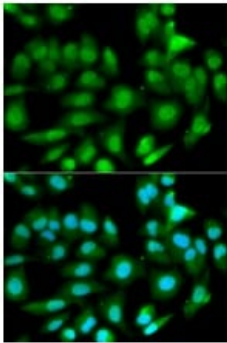
**Lane 2 :** Mouse heart extract

**Predicted band size:** 26 kDa



Immunohistochemical analysis of paraffin-embedded Human kidney tissue labeling GSTM2 with ab196503 at 1/200 dilution (200x lens).

Immunohistochemistry (Formalin/PFA-fixed paraffin-embedded sections) - Anti-GSTM2 antibody (ab196503)



Immunofluorescent analysis of HeLa cells labeling GSTM2 with ab196503 at 1/50 dilution. Lower image shows DAPI for nuclear staining (Blue).

Immunocytochemistry/ Immunofluorescence - Anti-GSTM2 antibody (ab196503)

**Please note:** All products are "FOR RESEARCH USE ONLY. NOT FOR USE IN DIAGNOSTIC PROCEDURES"

### **Our Abpromise to you: Quality guaranteed and expert technical support**

- Replacement or refund for products not performing as stated on the datasheet
- Valid for 12 months from date of delivery
- Response to your inquiry within 24 hours
- We provide support in Chinese, English, French, German, Japanese and Spanish
- Extensive multi-media technical resources to help you
- We investigate all quality concerns to ensure our products perform to the highest standards

If the product does not perform as described on this datasheet, we will offer a refund or replacement. For full details of the Abpromise, please visit <https://www.abcam.com/abpromise> or contact our technical team.

### **Terms and conditions**

---

- Guarantee only valid for products bought direct from Abcam or one of our authorized distributors