

# Anti-Guanylyl Cyclase alpha 1/GUCY1A3 antibody [EPR12270] $\alpha$ b172480

Recombinant RabMAb

2 Images

### Overview

Product name	Anti-Guanylyl Cyclase alpha 1/GUCY1A3 antibody [EPR12270]
Description	Rabbit monoclonal [EPR12270] to Guanylyl Cyclase alpha 1/GUCY1A3
Host species	Rabbit
Tested applications	<b>Suitable for:</b> WB <b>Unsuitable for:</b> ICC/IF, IHC-P or IP
Species reactivity	<b>Reacts with:</b> Human <b>Does not react with:</b> Mouse, Rat
Immunogen	Recombinant fragment within Human Guanylyl Cyclase alpha 1/GUCY1A3. The exact sequence is proprietary. Database link: <a href="#">Q02108</a>
Positive control	Human fetal kidney and fetal lung tissue lysate.
General notes	This product is a recombinant monoclonal antibody, which offers several advantages including: <ul style="list-style-type: none"> <li>- High batch-to-batch consistency and reproducibility</li> <li>- Improved sensitivity and specificity</li> <li>- Long-term security of supply</li> <li>- Animal-free production</li> </ul> For more information <a href="#">see here</a> . Our RabMAb <sup>®</sup> technology is a patented hybridoma-based technology for making rabbit monoclonal antibodies. For details on our patents, please refer to <a href="#">RabMAb<sup>®</sup> patents</a> .

### Properties

Form	Liquid
Storage instructions	Shipped at 4°C. Store at +4°C short term (1-2 weeks). Upon delivery aliquot. Store at -20°C long term. Avoid freeze / thaw cycle.
Storage buffer	pH: 7.20 Preservative: 0.01% Sodium azide Constituents: 9% PBS, 40% Glycerol (glycerin, glycerine), 0.05% BSA, 50% Tissue culture supernatant

<b>Purity</b>	Tissue culture supernatant
<b>Clonality</b>	Monoclonal
<b>Clone number</b>	EPR12270
<b>Isotype</b>	IgG

## Applications

**The Abpromise guarantee** Our **Abpromise guarantee** covers the use of ab172480 in the following tested applications. The application notes include recommended starting dilutions; optimal dilutions/concentrations should be determined by the end user.

Application	Abreviews	Notes
WB		1/1000 - 1/10000. Predicted molecular weight: 77 kDa.

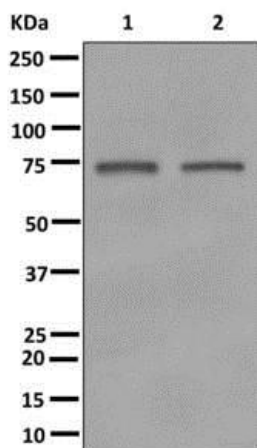
**Application notes** Is unsuitable for ICC/IF, IHC-P or IP.

## Target

**Sequence similarities** Belongs to the adenylyl cyclase class-4/guanylyl cyclase family. Contains 1 guanylate cyclase domain.

**Cellular localization** Cytoplasm.

## Images



**All lanes :** Anti-Guanylyl Cyclase alpha 1/GUCY1A3 antibody [EPR12270] (ab172480) at 1/1000 dilution

**Lane 1 :** Human fetal kidney tissue lysate

**Lane 2 :** Human fetal lung tissue lysate

Lysates/proteins at 10 µg per lane.

**Predicted band size:** 77 kDa

Western blot - Anti-Guanylyl Cyclase alpha 1/GUCY1A3 antibody [EPR12270] (ab172480)

### Why choose a recombinant antibody?



**Research with confidence**  
Consistent and reproducible results



**Long-term and scalable supply**  
Recombinant technology



**Success from the first experiment**  
Confirmed specificity



**Ethical standards compliant**  
Animal-free production

Anti-Guanylyl Cyclase alpha 1/GUCY1A3 antibody  
[EPR12270] (ab172480)

**Please note:** All products are "FOR RESEARCH USE ONLY. NOT FOR USE IN DIAGNOSTIC PROCEDURES"

### Our Abpromise to you: Quality guaranteed and expert technical support

---

- Replacement or refund for products not performing as stated on the datasheet
- Valid for 12 months from date of delivery
- Response to your inquiry within 24 hours
- We provide support in Chinese, English, French, German, Japanese and Spanish
- Extensive multi-media technical resources to help you
- We investigate all quality concerns to ensure our products perform to the highest standards

If the product does not perform as described on this datasheet, we will offer a refund or replacement. For full details of the Abpromise, please visit <https://www.abcam.com/abpromise> or contact our technical team.

### Terms and conditions

---

- Guarantee only valid for products bought direct from Abcam or one of our authorized distributors