

Product datasheet

Anti-Haploid sperm cell-specific antigen antibody [TRA54] ab92286

[5 References](#) [1 Image](#)

Overview

Product name	Anti-Haploid sperm cell-specific antigen antibody [TRA54]
Description	Rat monoclonal [TRA54] to Haploid sperm cell-specific antigen
Host species	Rat
Tested applications	Suitable for: WB
Species reactivity	Reacts with: Mouse
Immunogen	Adult Mouse testis.
Positive control	Mouse testis lysate.
General notes	<p>The Life Science industry has been in the grips of a reproducibility crisis for a number of years. Abcam is leading the way in addressing this with our range of recombinant monoclonal antibodies and knockout edited cell lines for gold-standard validation. Please check that this product meets your needs before purchasing.</p> <p>If you have any questions, special requirements or concerns, please send us an inquiry and/or contact our Support team ahead of purchase. Recommended alternatives for this product can be found below, along with publications, customer reviews and Q&As</p>

Properties

Form	Liquid
Storage instructions	Shipped at 4°C. Store at +4°C short term (1-2 weeks). Upon delivery aliquot. Store at -20°C long term.
Storage buffer	pH: 6 Constituents: PBS, 50% Glycerol (glycerin, glycerine)
Purification notes	ab92286 was purified from the serum-free culture medium of the hybridoma clone TRA54 by proprietary chromatography processes under mild conditions.
Clonality	Monoclonal
Clone number	TRA54
Isotype	IgM

Applications

The Abpromise guarantee

Our **Abpromise guarantee** covers the use of ab92286 in the following tested applications.

The application notes include recommended starting dilutions; optimal dilutions/concentrations should be determined by the end user.

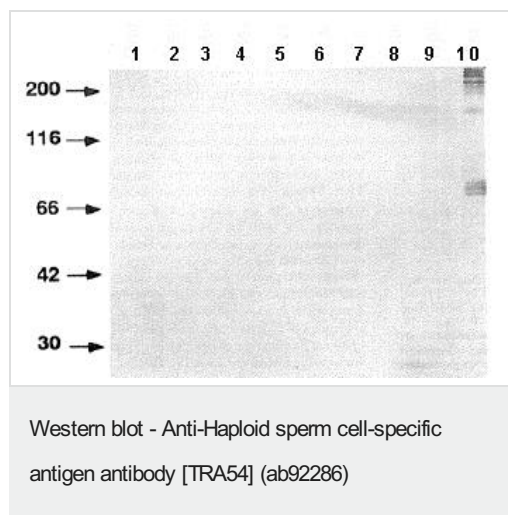
Application	Abreviews	Notes
WB		Use a concentration of 1 µg/ml.

Target

Relevance

Many transcripts for proteins specifically expressed in haploid germ cells are synthesized in the spermatogenesis. A monoclonal antibody TRA54 recognizes specific organelles in germ cell cytoplasm from spermatocytes to spermatids.

Images



All lanes : Anti-Haploid sperm cell-specific antigen antibody [TRA54] (ab92286) at 1/5000 dilution

Lane 1 : Mouse brain cell lysate

Lane 2 : Mouse Heart cell lysate

Lane 3 : Mouse Intestine cell lysate

Lane 4 : Mouse Kidney cell lysate

Lane 5 : Mouse Liver cell lysate

Lane 6 : Mouse Muscle cell lysate

Lane 7 : Mouse Ovary cell lysate

Lane 8 : Mouse Skin cell lysate

Lane 9 : Mouse Spleen cell lysate

Lane 10 : Mouse Testis cell lysate

Lysates/proteins at 100 µg per lane.

Observed band size: >200,190,85 kDa

Please note: All products are "FOR RESEARCH USE ONLY. NOT FOR USE IN DIAGNOSTIC PROCEDURES"

Our Abpromise to you: Quality guaranteed and expert technical support

- Replacement or refund for products not performing as stated on the datasheet
- Valid for 12 months from date of delivery
- Response to your inquiry within 24 hours

- We provide support in Chinese, English, French, German, Japanese and Spanish
- Extensive multi-media technical resources to help you
- We investigate all quality concerns to ensure our products perform to the highest standards

If the product does not perform as described on this datasheet, we will offer a refund or replacement. For full details of the Abpromise, please visit <https://www.abcam.com/abpromise> or contact our technical team.

Terms and conditions

- Guarantee only valid for products bought direct from Abcam or one of our authorized distributors