

Product datasheet

Anti-Haspin antibody ab21686

★★★★★ [1 Abreviews](#) [6 References](#) [1 Image](#)

Overview

Product name	Anti-Haspin antibody
Description	Rabbit polyclonal to Haspin
Host species	Rabbit
Tested applications	Suitable for: WB
Species reactivity	Reacts with: Human
Immunogen	Synthetic peptide conjugated to KLH derived from within residues 1 - 100 of Human Haspin. Read Abcam's proprietary immunogen policy (Peptide available as ab23532 .)
Positive control	This antibody gave a positive signal in the following whole cell lysates: HeLa Expressing myc-Haspin (interphase); HeLa Expressing myc-Haspin (mitosis) Whole Cell Lysate.
General notes	<p>The Life Science industry has been in the grips of a reproducibility crisis for a number of years. Abcam is leading the way in addressing this with our range of recombinant monoclonal antibodies and knockout edited cell lines for gold-standard validation. Please check that this product meets your needs before purchasing.</p> <p>If you have any questions, special requirements or concerns, please send us an inquiry and/or contact our Support team ahead of purchase. Recommended alternatives for this product can be found below, along with publications, customer reviews and Q&As</p>

Properties

Form	Liquid
Storage instructions	Shipped at 4°C. Store at +4°C short term (1-2 weeks). Upon delivery aliquot. Store at -20°C or -80°C. Avoid freeze / thaw cycle.
Storage buffer	pH: 7.40 Preservative: 0.02% Sodium azide Constituent: PBS Batches of this product that have a concentration < 1mg/ml may have BSA added as a stabilising agent. If you would like information about the formulation of a specific lot, please contact our scientific support team who will be happy to help.
Purity	Immunogen affinity purified
Clonality	Polyclonal

Isotype

IgG

Applications

The Abpromise guarantee

Our **Abpromise guarantee** covers the use of ab21686 in the following tested applications.

The application notes include recommended starting dilutions; optimal dilutions/concentrations should be determined by the end user.

Application	Abreviews	Notes
WB	★★★★★ (1)	Use a concentration of 0.2 µg/ml. Detects a band of approximately 90 kDa (predicted molecular weight: 88 kDa).

Target

Function

Required for normal alignment of chromosomes at metaphase. Phosphorylates histone H3 'Thr-3' during mitosis.

Tissue specificity

Strongly expressed in testis. Also present in thymus and bone marrow and low levels observed in prostate, intestine, lung, spleen and lymph node. Expressed in fetal skin, liver, kidney and small intestine and also in proliferating but not non-proliferating cell lines.

Sequence similarities

Belongs to the protein kinase superfamily. Ser/Thr protein kinase family. Haspin subfamily. Contains 1 protein kinase domain.

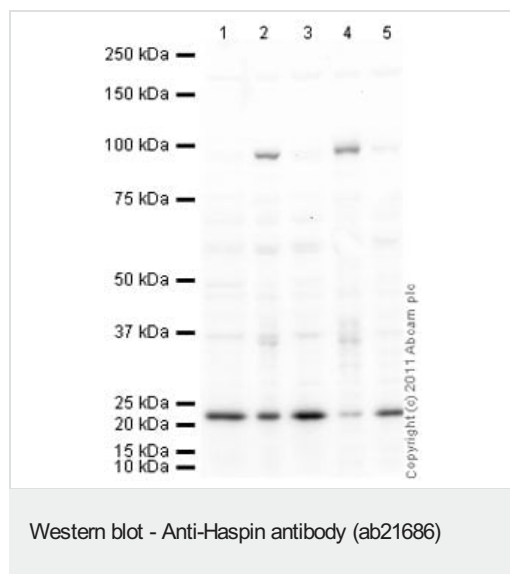
Post-translational modifications

Autophosphorylated on both serine and threonine residues (By similarity). Phosphorylated during mitosis. Phosphorylated upon DNA damage, probably by ATM or ATR.

Cellular localization

Nucleus.

Images



All lanes : Anti-Haspin antibody (ab21686) at 1 µg/ml

Lane 1 : HeLa (Human epithelial carcinoma cell line) Whole Cell Lysate at 10 µg

Lane 2 : HeLa Expressing myc-Haspin (interphase) Whole Cell Lysate - Positive Control at 5 µl

Lane 3 : HeLa Interphase Whole Cell Lysate - Negative Control at 10 µg

Lane 4 : HeLa Expressing myc-Haspin (mitosis) Whole Cell Lysate - Positive Control at 5 µl

Lane 5 : HeLa Mitosis Whole Cell Lysate - Negative Control at 10 µg

Secondary

All lanes : Goat polyclonal Secondary Antibody to Rabbit IgG - H&L (HRP), pre-adsorbed at 1/5000 dilution

Performed under reducing conditions.

Predicted band size: 88 kDa

Observed band size: 90 kDa

Additional bands at: 23 kDa. We are unsure as to the identity of these extra bands.

Exposure time: 4 minutes

Please note: All products are "FOR RESEARCH USE ONLY. NOT FOR USE IN DIAGNOSTIC PROCEDURES"

Our Abpromise to you: Quality guaranteed and expert technical support

- Replacement or refund for products not performing as stated on the datasheet
- Valid for 12 months from date of delivery
- Response to your inquiry within 24 hours
- We provide support in Chinese, English, French, German, Japanese and Spanish
- Extensive multi-media technical resources to help you
- We investigate all quality concerns to ensure our products perform to the highest standards

If the product does not perform as described on this datasheet, we will offer a refund or replacement. For full details of the Abpromise, please visit <https://www.abcam.com/abpromise> or contact our technical team.

Terms and conditions

- Guarantee only valid for products bought direct from Abcam or one of our authorized distributors