

### Anti-hCG antibody ab54410

[8 References](#) [1 Image](#)

#### Overview

<b>Product name</b>	Anti-hCG antibody
<b>Description</b>	Rabbit polyclonal to hCG
<b>Host species</b>	Rabbit
<b>Specificity</b>	This antibody recognises both alpha and beta subunits of hCG.
<b>Tested applications</b>	<b>Suitable for:</b> WB
<b>Species reactivity</b>	<b>Reacts with:</b> Human
<b>Immunogen</b>	Purified Chorionic Gonadotropin from human placental glucoprotein urine.
<b>Positive control</b>	Purified human CG and rat liver tissue lysate.
<b>General notes</b>	<p>This product is manufactured by BioVision, an Abcam company and was previously called 5778 Chorionic Gonadotropin (CG) Antibody. 5778-100 is the same size as the 100 µg size of ab54410.</p> <p>The Life Science industry has been in the grips of a reproducibility crisis for a number of years. Abcam is leading the way in addressing this with our range of recombinant monoclonal antibodies and knockout edited cell lines for gold-standard validation. Please check that this product meets your needs before purchasing.</p> <p>If you have any questions, special requirements or concerns, please send us an inquiry and/or contact our Support team ahead of purchase. Recommended alternatives for this product can be found below, along with publications, customer reviews and Q&amp;As</p>

#### Properties

<b>Form</b>	Liquid
<b>Storage instructions</b>	Shipped at 4°C. Upon delivery aliquot and store at -20°C or -80°C. Avoid repeated freeze / thaw cycles.
<b>Storage buffer</b>	<p>pH: 7.20</p> <p>Preservative: 0.01% Thimerosal (merthiolate)</p> <p>Constituents: 0.5% BSA, 30% Glycerol (glycerin, glycerine), PBS</p>
<b>Purity</b>	Protein A purified
<b>Clonality</b>	Polyclonal
<b>Isotype</b>	IgG

## Applications

### The Abpromise guarantee

Our **Abpromise guarantee** covers the use of ab54410 in the following tested applications.

The application notes include recommended starting dilutions; optimal dilutions/concentrations should be determined by the end user.

Application	Abreviews	Notes
WB		Use a concentration of 0.5 - 4 µg/ml.

## Target

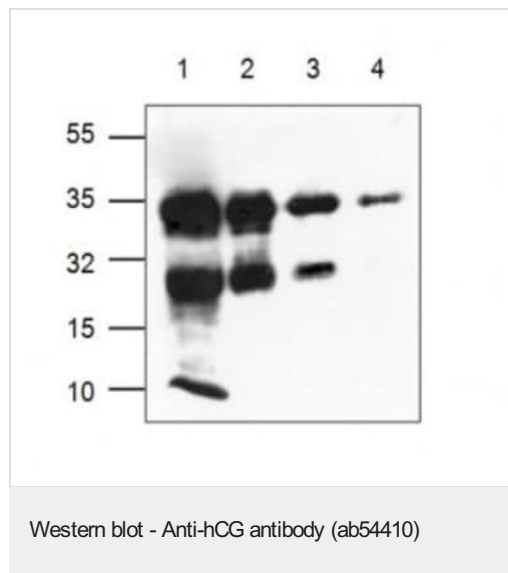
### Relevance

Human chorionic gonadotropin (hCG) is a glycoprotein hormone produced by trophoblastic cells of the placenta beginning 10 to 12 days after conception. Maintenance of the fetus in the first trimester of pregnancy requires the production of hCG, which binds to the corpus luteum of the ovary which is stimulated to produce progesterone which in turn maintains the secretory endometrium. hCG is present only in trace amounts in non pregnant urine and sera. It rises sharply during pregnancy. HCG is composed of two non identical, non covalently linked polypeptide chains designated as the a and b subunits. The a subunit of HCG is nearly identical to that of thyroid stimulating hormone (TSH), follicle stimulating hormone (FSH) and luteinizing hormone (LH). A germ cell tumor which is positive for cytokeratin, placental alkaline phosphatase (PLAP) and HCG but negative for EMA and AFP is probably a choriocarcinoma.

### Cellular localization

Secreted

## Images



**All lanes :** Anti-hCG antibody (ab54410) (0.5-4 ug/m)

**Lane 1 :** Recombinant Human Chorionic Gonadotropin at 0.01 µg

**Lane 2 :** Recombinant Human Chorionic Gonadotropin at 0.05 µg

**Lane 3 :** Recombinant Human Chorionic Gonadotropin at 0.25 µg

**Lane 4 :** Recombinant Human Chorionic Gonadotropin at 1 µg

This information is only intended as a guide. The optimal dilutions must be determined by the user.

**Please note:** All products are "FOR RESEARCH USE ONLY. NOT FOR USE IN DIAGNOSTIC PROCEDURES"

## Our Abpromise to you: Quality guaranteed and expert technical support

- Replacement or refund for products not performing as stated on the datasheet
- Valid for 12 months from date of delivery

- Response to your inquiry within 24 hours
- We provide support in Chinese, English, French, German, Japanese and Spanish
- Extensive multi-media technical resources to help you
- We investigate all quality concerns to ensure our products perform to the highest standards

If the product does not perform as described on this datasheet, we will offer a refund or replacement. For full details of the Abpromise, please visit <https://www.abcam.com/abpromise> or contact our technical team.

#### **Terms and conditions**

---

- Guarantee only valid for products bought direct from Abcam or one of our authorized distributors