

Product datasheet

Anti-hCG beta antibody [5H4-E2] α b9582

★★★★★ [2 Abreviews](#) [22 References](#) [2 Images](#)

Overview

Product name	Anti-hCG beta antibody [5H4-E2]
Description	Mouse monoclonal [5H4-E2] to hCG beta
Host species	Mouse
Specificity	The antibody recognizes the whole hCG beta and the C-terminal end part of hCG beta, as well as the hCG dimer molecule. It does not react with hCG alpha, FSH, LH, TSH and albumins (evaluated by simple-binding ELISA using 1.00 µg/well purified antigens (WHO standards) and 1.00 µg/ml primary antibody concentrations). This antibody labels the cytoplasm of hCG beta producing (trophoblastic) cells in placenta, mola hydatidosa, choriocarcinoma, embryonal carcinoma and some undifferentiated lung cancers, as well as, the JAR choriocarcinoma cell line. It does not react with cells of normal endometrial, testicular tissues and lung (tested by immunohistochemistry on formalin-fixed, paraffin-embedded tissue sections using the Streptavidin-biotinylated peroxidase method).
Tested applications	Suitable for: IHC-P
Species reactivity	Reacts with: Human Does not react with: Horse
Immunogen	Full length native protein (purified) corresponding to Human hCG beta. Database link: P01233
Positive control	ICC/IF: Human chorionic villus cells. IHC-P: Human fetal chorionic villus tissue.
General notes	<p>The Life Science industry has been in the grips of a reproducibility crisis for a number of years. Abcam is leading the way in addressing this with our range of recombinant monoclonal antibodies and knockout edited cell lines for gold-standard validation. Please check that this product meets your needs before purchasing.</p> <p>If you have any questions, special requirements or concerns, please send us an inquiry and/or contact our Support team ahead of purchase. Recommended alternatives for this product can be found below, along with publications, customer reviews and Q&As</p>

Properties

Form	Liquid
Storage instructions	Shipped at 4°C. Store at +4°C short term (1-2 weeks). Store at -20°C or -80°C. Avoid freeze / thaw cycle.
Storage buffer	Preservative: 0.097% Sodium azide

	Constituents: Tris HCl, 0.2% BSA
Purity	Protein A purified
Clonality	Monoclonal
Clone number	5H4-E2
Isotype	IgG1
Light chain type	kappa

Applications

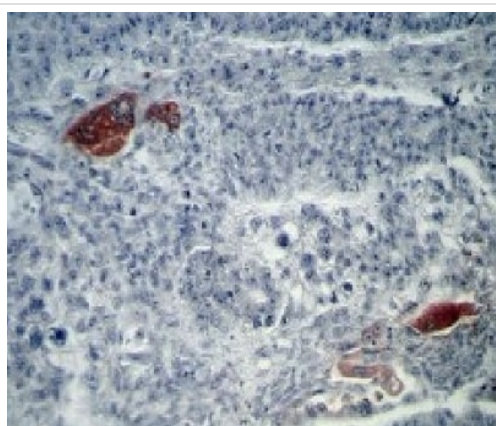
The Abpromise guarantee Our **Abpromise guarantee** covers the use of ab9582 in the following tested applications. The application notes include recommended starting dilutions; optimal dilutions/concentrations should be determined by the end user.

Application	Abreviews	Notes
IHC-P		Use at an assay dependent concentration. It gives optimal immunostaining with the majority of well-known detection systems (e.g. LSAB, ABC/SABC, PAP, APAAP, double staining, etc.). Antigen retrieval, such as heating of slides in 10 mM citrate buffer, pH 6.00 or proteolytic pre-treatment of tissues may increase the staining intensity. The recommended time of incubation is 60 minutes at room temperature.

Target

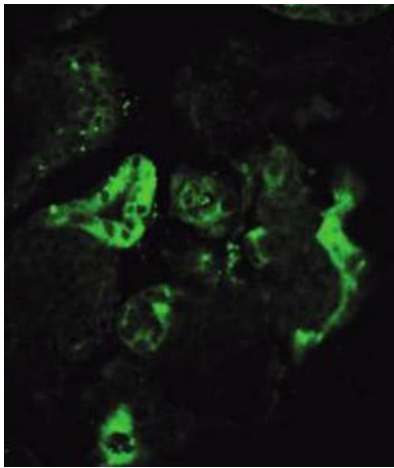
Relevance Function: Stimulates the ovaries to synthesize the steroids that are essential for the maintenance of pregnancy. Tissue specificity: Placenta. Similarity: Belongs to the glycoprotein hormones subunit beta family. Developmental stage: Made by the first trimester placenta.

Images



Formalin-fixed, paraffin-embedded human seminoma tissue stained for hCG beta with ab9582 at a 1/50 dilution in immunohistochemical analysis.

Immunohistochemistry (Formalin/PFA-fixed paraffin-embedded sections) - Anti-hCG beta antibody [5H4-E2] (ab9582)



Immunohistochemistry (Formalin/PFA-fixed paraffin-embedded sections) - Anti-hCG beta antibody [5H4-E2] (ab9582)

Image from Spitalieri P et al, Cloning Stem Cells. 2009 Dec;11(4):535-56, Fig 1, DOI: 10.1089/clo.2009.0046.

ab9582 staining hCG beta in human fetal chorionic villus by Immunohistochemistry (Formalin/PFA-fixed paraffin-embedded sections). Samples were fixed in 4% paraformaldehyde and then incubated with ab9582 in PBT [3% bovine serum albumin (BSA) and 0.5% Triton X-100 in phosphate-buffered saline (PBS)] overnight at 4°C. After extensive washing with PBT, samples were incubated with a secondary antibody conjugated to Alexa-Fluor[®] 488 for 1 hour at room temperature in the dark. After nuclear staining with Hoechst slides were mounted with PBS/ glycerol.

Please note: All products are "FOR RESEARCH USE ONLY. NOT FOR USE IN DIAGNOSTIC PROCEDURES"

Our Abpromise to you: Quality guaranteed and expert technical support

- Replacement or refund for products not performing as stated on the datasheet
- Valid for 12 months from date of delivery
- Response to your inquiry within 24 hours
- We provide support in Chinese, English, French, German, Japanese and Spanish
- Extensive multi-media technical resources to help you
- We investigate all quality concerns to ensure our products perform to the highest standards

If the product does not perform as described on this datasheet, we will offer a refund or replacement. For full details of the Abpromise, please visit <https://www.abcam.com/abpromise> or contact our technical team.

Terms and conditions

- Guarantee only valid for products bought direct from Abcam or one of our authorized distributors