


### Anti-Hemopexin antibody ab133415

[4 References](#) [1 Image](#)

#### Overview

<b>Product name</b>	Anti-Hemopexin antibody
<b>Description</b>	Rabbit polyclonal to Hemopexin
<b>Host species</b>	Rabbit
<b>Tested applications</b>	<b>Suitable for:</b> WB
<b>Species reactivity</b>	<b>Reacts with:</b> Mouse, Rat <b>Predicted to work with:</b> Rabbit, Dog, Human, Pig, Chimpanzee, Macaque monkey, Gorilla, Orangutan 
<b>Immunogen</b>	Synthetic peptide corresponding to Human Hemopexin aa 250-350 conjugated to keyhole limpet haemocyanin. (Peptide available as <a href="#">ab151532</a> )
<b>Positive control</b>	This antibody gave a positive signal in the following tissue lysates: Mouse Sciatic Nerve; Rat Sciatic Nerve; Mouse Liver; Rat Liver.
<b>General notes</b>	<p>The Life Science industry has been in the grips of a reproducibility crisis for a number of years. Abcam is leading the way in addressing this with our range of recombinant monoclonal antibodies and knockout edited cell lines for gold-standard validation. Please check that this product meets your needs before purchasing.</p> <p>If you have any questions, special requirements or concerns, please send us an inquiry and/or contact our Support team ahead of purchase. Recommended alternatives for this product can be found below, along with publications, customer reviews and Q&amp;As</p>

#### Properties

<b>Form</b>	Liquid
<b>Storage instructions</b>	Shipped at 4°C. Store at +4°C short term (1-2 weeks). Upon delivery aliquot. Store at -20°C or -80°C. Avoid freeze / thaw cycle.
<b>Purity</b>	Immunogen affinity purified
<b>Clonality</b>	Polyclonal
<b>Isotype</b>	IgG

#### Applications

## The Abpromise guarantee

Our **Abpromise guarantee** covers the use of ab133415 in the following tested applications.

The application notes include recommended starting dilutions; optimal dilutions/concentrations should be determined by the end user.

Application	Abreviews	Notes
WB		Use a concentration of 1 µg/ml. Detects a band of approximately 72 kDa (predicted molecular weight: 52 kDa).

## Target

### Function

Binds heme and transports it to the liver for breakdown and iron recovery, after which the free hemopexin returns to the circulation.

### Tissue specificity

Expressed by the liver and secreted in plasma.

### Sequence similarities

Belongs to the hemopexin family.  
Contains 5 hemopexin-like domains.

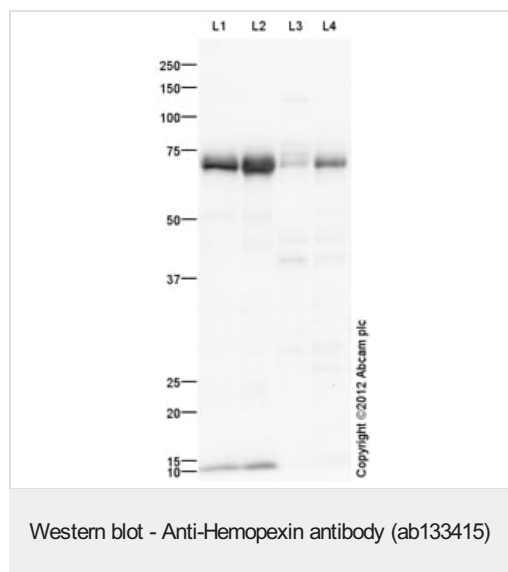
### Post-translational modifications

N- and O-glycosylated. O-glycosylated with core 1 or possibly core 8 glycans.

### Cellular localization

Secreted.

## Images



**All lanes** : Anti-Hemopexin antibody (ab133415) at 1 µg/ml

**Lane 1** : Mouse Sciatic Nerve Tissue Lysate

**Lane 2** : Rat Sciatic Nerve Rat Tissue Lysate

**Lane 3** : Liver (Mouse) Tissue Lysate

**Lane 4** : Liver (Rat) Tissue Lysate

Lysates/proteins at 10 µg per lane.

### Secondary

**All lanes** : Goat Anti-Rabbit IgG H&L (HRP) (**ab97051**) at 1/10000 dilution

Developed using the ECL technique.

Performed under reducing conditions.

**Predicted band size:** 52 kDa

**Observed band size:** 72 kDa

**Additional bands at:** 12 kDa. We are unsure as to the identity of these extra bands.

**Exposure time:** 2 minutes

Hemopexin has been shown to migrate at ~70 kDa under reducing conditions by Madore et al PMID: 9930744. We welcome customer feedback. Hemopexin contains a number of potential glycosylation sites (SwissProt) which may explain its migration at a higher molecular weight than predicted. This blot was produced using a 10% Bis-tris gel under the MES buffer system. The gel was run at 200V for 35 minutes before being transferred onto a Nitrocellulose membrane at 30V for 70 minutes. The membrane was then blocked for an hour using 5% Bovine Serum Albumin before being incubated with ab133415 overnight at 4°C. Antibody binding was detected using an anti-rabbit antibody conjugated to HRP, and visualised using ECL development solution.

**Please note:** All products are "FOR RESEARCH USE ONLY. NOT FOR USE IN DIAGNOSTIC PROCEDURES"

#### **Our Abpromise to you: Quality guaranteed and expert technical support**

---

- Replacement or refund for products not performing as stated on the datasheet
- Valid for 12 months from date of delivery
- Response to your inquiry within 24 hours
- We provide support in Chinese, English, French, German, Japanese and Spanish
- Extensive multi-media technical resources to help you
- We investigate all quality concerns to ensure our products perform to the highest standards

If the product does not perform as described on this datasheet, we will offer a refund or replacement. For full details of the Abpromise, please visit <https://www.abcam.com/abpromise> or contact our technical team.

#### **Terms and conditions**

---

- Guarantee only valid for products bought direct from Abcam or one of our authorized distributors