


Product datasheet

Anti-Hemopexin antibody [EPSISR42] α b150401

Recombinant RabMAb

[1 References](#) [2 Images](#)

Overview

Product name	Anti-Hemopexin antibody [EPSISR42]
Description	Rabbit monoclonal [EPSISR42] to Hemopexin
Host species	Rabbit
Tested applications	Suitable for: WB
Species reactivity	Reacts with: Human Predicted to work with: Mouse, Rat 
Immunogen	Synthetic peptide within Human Hemopexin aa 50-150. The exact sequence is proprietary.
Positive control	Human plasma and Human serum lysates.
General notes	<p>This product is a recombinant monoclonal antibody, which offers several advantages including:</p> <ul style="list-style-type: none"> - High batch-to-batch consistency and reproducibility - Improved sensitivity and specificity - Long-term security of supply - Animal-free production <p>For more information see here.</p> <p>Our RabMAb[®] technology is a patented hybridoma-based technology for making rabbit monoclonal antibodies. For details on our patents, please refer to RabMAb[®] patents.</p>

Properties

Form	Liquid
Storage instructions	Shipped at 4°C. Store at -20°C.
Storage buffer	pH: 7.20 Preservative: 0.01% Sodium azide Constituents: 59% PBS, 40% Glycerol (glycerin, glycerine), 0.05% BSA
Purity	Protein A purified
Clonality	Monoclonal
Clone number	EPSISR42
Isotype	IgG

Applications

The Abpromise guarantee

Our **Abpromise guarantee** covers the use of ab150401 in the following tested applications.

The application notes include recommended starting dilutions; optimal dilutions/concentrations should be determined by the end user.

Application	Abreviews	Notes
WB		1/1000 - 1/10000. Predicted molecular weight: 51 kDa.

Target

Function

Binds heme and transports it to the liver for breakdown and iron recovery, after which the free hemopexin returns to the circulation.

Tissue specificity

Expressed by the liver and secreted in plasma.

Sequence similarities

Belongs to the hemopexin family.
Contains 5 hemopexin-like domains.

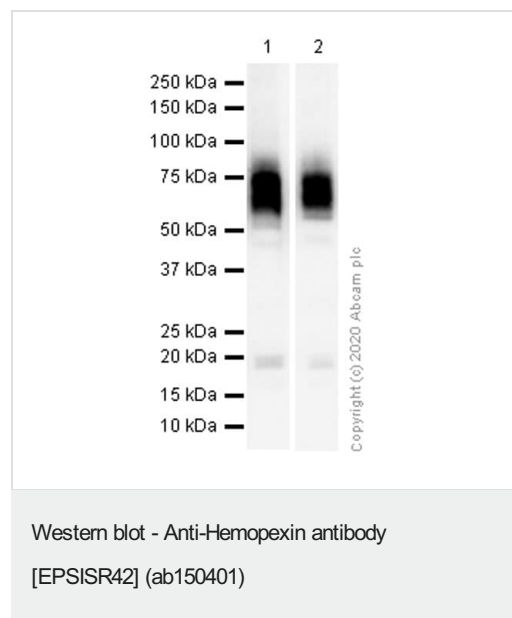
Post-translational modifications

N- and O-glycosylated. O-glycosylated with core 1 or possibly core 8 glycans.

Cellular localization

Secreted.

Images



All lanes : Anti-Hemopexin antibody [EPSISR42] (ab150401) at 1/10000 dilution (Purified)

Lane 1 : Human serum lysate

Lane 2 : Human plasma lysate

Secondary

All lanes : Goat Anti-Rabbit IgG (HRP) with minimal cross-reactivity with human IgG at 1/2000 dilution

Predicted band size: 51 kDa

Why choose a recombinant antibody?



Research with confidence
Consistent and reproducible results



Long-term and scalable supply
Recombinant technology



Success from the first experiment
Confirmed specificity



Ethical standards compliant
Animal-free production

Anti-Hemopexin antibody [EPSISR42] (ab150401)

Please note: All products are "FOR RESEARCH USE ONLY. NOT FOR USE IN DIAGNOSTIC PROCEDURES"

Our Abpromise to you: Quality guaranteed and expert technical support

- Replacement or refund for products not performing as stated on the datasheet
- Valid for 12 months from date of delivery
- Response to your inquiry within 24 hours
- We provide support in Chinese, English, French, German, Japanese and Spanish
- Extensive multi-media technical resources to help you
- We investigate all quality concerns to ensure our products perform to the highest standards

If the product does not perform as described on this datasheet, we will offer a refund or replacement. For full details of the Abpromise, please visit <https://www.abcam.com/abpromise> or contact our technical team.

Terms and conditions

- Guarantee only valid for products bought direct from Abcam or one of our authorized distributors