

Product datasheet

Anti-Hexokinase 1 antibody [EPR10135(B)] ab154839

KO VALIDATED Recombinant RabMAb

3 Images

Overview

Product name	Anti-Hexokinase 1 antibody [EPR10135(B)]
Description	Rabbit monoclonal [EPR10135(B)] to Hexokinase 1
Host species	Rabbit
Tested applications	Suitable for: WB Unsuitable for: Flow Cyt, ICC/IF, IHC-P or IP
Species reactivity	Reacts with: Human
Immunogen	Synthetic peptide. This information is proprietary to Abcam and/or its suppliers.
Positive control	WB: HEK-293T, MCF7, U-87 MG, and HeLa cell lysates.
General notes	<p>This product is a recombinant monoclonal antibody, which offers several advantages including:</p> <ul style="list-style-type: none"> - High batch-to-batch consistency and reproducibility - Improved sensitivity and specificity - Long-term security of supply - Animal-free production <p>For more information see here.</p> <p>Our RabMAb[®] technology is a patented hybridoma-based technology for making rabbit monoclonal antibodies. For details on our patents, please refer to RabMAb[®] patents.</p> <p>Mouse, Rat: We have preliminary internal testing data to indicate this antibody may not react with these species. Please contact us for more information.</p>

Properties

Form	Liquid
Storage instructions	Shipped at 4°C. Store at -20°C.
Storage buffer	pH: 7.2 Preservative: 0.01% Sodium azide Constituents: 9% PBS, 40% Glycerol (glycerin, glycerine), 0.05% BSA, 50% Tissue culture supernatant
Purity	Tissue culture supernatant
Clonality	Monoclonal

Clone number EPR10135(B)

Isotype IgG

Applications

The Abpromise guarantee Our **Abpromise guarantee** covers the use of ab154839 in the following tested applications. The application notes include recommended starting dilutions; optimal dilutions/concentrations should be determined by the end user.

Application	Abreviews	Notes
WB		1/1000 - 1/10000. Predicted molecular weight: 102 kDa.

Application notes Is unsuitable for Flow Cyt, ICC/IF, IHC-P or IP.

Target

Tissue specificity Isoform 2 is erythrocyte specific. Isoform 3 and isoform 4 are testis-specific.

Pathway Carbohydrate metabolism; hexose metabolism.

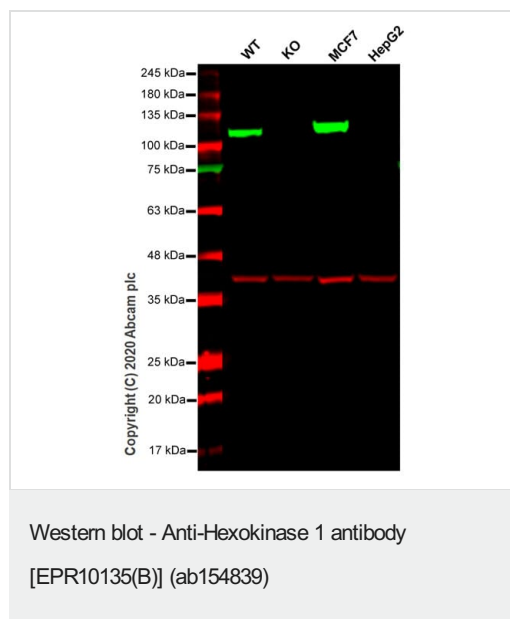
Involvement in disease Hexokinase deficiency
Neuropathy, hereditary motor and sensory, Russe type

Sequence similarities Belongs to the hexokinase family.
Contains 2 hexokinase domains.

Domain The N- and C-terminal halves of this hexokinase show extensive sequence similarity to each other. The catalytic activity is associated with the C-terminus while regulatory function is associated with the N-terminus. Each domain can bind a single glucose and Gluc-6-P molecule.

Cellular localization Mitochondrion outer membrane. Its hydrophobic N-terminal sequence may be involved in membrane binding.

Images



All lanes : Anti-Hexokinase 1 antibody [EPR10135(B)] (ab154839) at 1/1000 dilution

Lane 1 : Wild-type HEK-293T cell lysate

Lane 2 : HK1 knockout HeLa cell lysate

Lane 3 : MCF7 cell lysate

Lane 4 : HepG2 cell lysate

Lysates/proteins at 20 µg per lane.

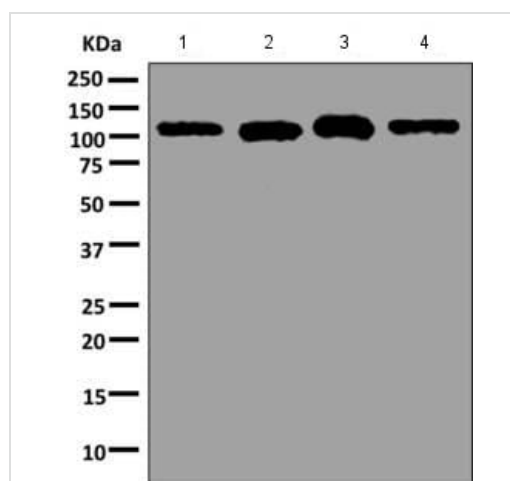
Performed under reducing conditions.

Predicted band size: 102 kDa

Observed band size: 102 kDa

Lanes 1-4: Merged signal (red and green). Green - ab154839 observed at 102 kDa. Red - loading control, **ab8245** observed at 37 kDa.

ab154839 Anti-Hexokinase 1 antibody [EPR10135(B)] was shown to specifically react with Hexokinase 1 in wild-type HEK293T cells. Loss of signal was observed when knockout cell line **ab267279** (knockout cell lysate **ab257161**) was used. Wild-type and Hexokinase 1 knockout samples were subjected to SDS-PAGE. ab154839 and Anti-GAPDH antibody [6C5] - Loading Control (**ab8245**) were incubated overnight at 4°C at 1 in 1000 dilution and 1 in 20000 dilution respectively. Blots were developed with Goat anti-Rabbit IgG H&L (IRDye® 800CW) preadsorbed (**ab216773**) and Goat anti-Mouse IgG H&L (IRDye® 680RD) preadsorbed (**ab216776**) secondary antibodies at 1 in 10000 dilution for 1 hour at room temperature before imaging.



Western blot - Anti-Hexokinase 1 antibody
[EPR10135(B)] (ab154839)

All lanes : Anti-Hexokinase 1 antibody [EPR10135(B)] (ab154839) at 1/1000 dilution

Lane 1 : 293T cell lysate

Lane 2 : MCF7 cell lysate

Lane 3 : U-87 MG cell lysate

Lane 4 : HeLa cell lysate

Lysates/proteins at 10 µg per lane.

Predicted band size: 102 kDa

Why choose a recombinant antibody?



Research with confidence
Consistent and reproducible results



Long-term and scalable supply
Recombinant technology



Success from the first experiment
Confirmed specificity



Ethical standards compliant
Animal-free production

Anti-Hexokinase 1 antibody [EPR10135(B)]
(ab154839)

Please note: All products are "FOR RESEARCH USE ONLY. NOT FOR USE IN DIAGNOSTIC PROCEDURES"

Our Abpromise to you: Quality guaranteed and expert technical support

- Replacement or refund for products not performing as stated on the datasheet
- Valid for 12 months from date of delivery
- Response to your inquiry within 24 hours
- We provide support in Chinese, English, French, German, Japanese and Spanish
- Extensive multi-media technical resources to help you
- We investigate all quality concerns to ensure our products perform to the highest standards

If the product does not perform as described on this datasheet, we will offer a refund or replacement. For full details of the Abpromise, please visit <https://www.abcam.com/abpromise> or contact our technical team.

Terms and conditions

- Guarantee only valid for products bought direct from Abcam or one of our authorized distributors