

Product datasheet

Anti-HEY2 antibody ab86010

★★★★☆ [2 Abreviews](#) [3 References](#) [1 Image](#)

Overview

Product name	Anti-HEY2 antibody
Description	Rabbit polyclonal to HEY2
Host species	Rabbit
Tested applications	Suitable for: WB
Species reactivity	Reacts with: Recombinant fragment
Immunogen	3 synthetic peptides (Human) conjugated to KLH
General notes	<p>The Life Science industry has been in the grips of a reproducibility crisis for a number of years. Abcam is leading the way in addressing this with our range of recombinant monoclonal antibodies and knockout edited cell lines for gold-standard validation. Please check that this product meets your needs before purchasing.</p> <p>If you have any questions, special requirements or concerns, please send us an inquiry and/or contact our Support team ahead of purchase. Recommended alternatives for this product can be found below, along with publications, customer reviews and Q&As</p>

Properties

Form	Liquid
Storage instructions	Shipped at 4°C. Upon delivery aliquot and store at -20°C or -80°C. Avoid repeated freeze / thaw cycles.
Storage buffer	Preservative: 0.01% Thimerosal (merthiolate)
Purity	Immunogen affinity purified
Clonality	Polyclonal
Isotype	IgG

Applications

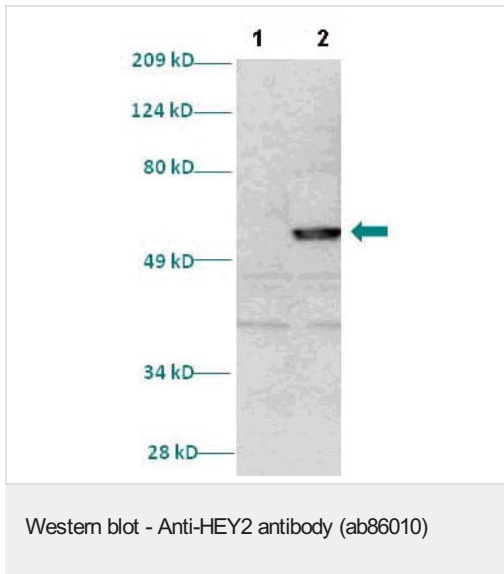
The Abpromise guarantee Our **Abpromise guarantee** covers the use of ab86010 in the following tested applications. The application notes include recommended starting dilutions; optimal dilutions/concentrations should be determined by the end user.

Application	Abreviews	Notes
WB		1/1000. Detects a band of approximately 50 kDa (predicted molecular weight: 50 kDa).

Target

Function	Downstream effector of Notch signaling which may be required for cardiovascular development. Transcriptional repressor which binds preferentially to the canonical E box sequence 5'-CACGTG-3'. Represses transcription by the cardiac transcriptional activators GATA4 and GATA6.
Sequence similarities	Belongs to the HEY family. Contains 1 basic helix-loop-helix (bHLH) domain. Contains 1 Orange domain.
Cellular localization	Nucleus.

Images



All lanes : Anti-HEY2 antibody (ab86010) at 1/1000 dilution

Lane 1 : Uninduced culture

Lane 2 : Induced culture of E.coli

Secondary

All lanes : anti-Rabbit IgG HRP at 1/1000 dilution

Predicted band size: 50 kDa

Please note: All products are "FOR RESEARCH USE ONLY. NOT FOR USE IN DIAGNOSTIC PROCEDURES"

Our Abpromise to you: Quality guaranteed and expert technical support

- Replacement or refund for products not performing as stated on the datasheet
- Valid for 12 months from date of delivery
- Response to your inquiry within 24 hours
- We provide support in Chinese, English, French, German, Japanese and Spanish
- Extensive multi-media technical resources to help you
- We investigate all quality concerns to ensure our products perform to the highest standards

If the product does not perform as described on this datasheet, we will offer a refund or replacement. For full details of the Abpromise, please visit <https://www.abcam.com/abpromise> or contact our technical team.

Terms and conditions

- Guarantee only valid for products bought direct from Abcam or one of our authorized distributors