

## Product datasheet

# Anti-HGF antibody [EGH2 4C12.1] ab10829

[1 References](#) [1 Image](#)

### Overview

---

<b>Product name</b>	Anti-HGF antibody [EGH2 4C12.1]
<b>Description</b>	Mouse monoclonal [EGH2 4C12.1] to HGF
<b>Host species</b>	Mouse
<b>Tested applications</b>	<b>Suitable for:</b> Sandwich ELISA
<b>Species reactivity</b>	<b>Reacts with:</b> Human
<b>Immunogen</b>	Recombinant fragment corresponding to Human HGF.

### General notes

Plasminogen related growth factors are potent effectors of growth, movement and differentiation of epithelia and endothelia. Membrane receptor for HGF/SF is the product of the proto-oncogene c-met a tyrosine kinase.

The Life Science industry has been in the grips of a reproducibility crisis for a number of years. Abcam is leading the way in addressing this with our range of recombinant monoclonal antibodies and knockout edited cell lines for gold-standard validation. Please check that this product meets your needs before purchasing.

If you have any questions, special requirements or concerns, please send us an inquiry and/or contact our Support team ahead of purchase. Recommended alternatives for this product can be found below, along with publications, customer reviews and Q&As

### Properties

---

<b>Form</b>	Liquid
<b>Storage instructions</b>	Shipped at 4°C. Upon delivery aliquot and store at -20°C or -80°C. Avoid repeated freeze / thaw cycles.
<b>Storage buffer</b>	Preservative: 0.02% Sodium azide Constituent: 99.98% PBS
<b>Purity</b>	Protein A purified
<b>Primary antibody notes</b>	Plasminogen related growth factors are potent effectors of growth, movement and differentiation of epithelia and endothelia. Membrane receptor for HGF/SF is the product of the proto-oncogene c-met a tyrosine kinase.
<b>Clonality</b>	Monoclonal

Clone number	EGH2 4C12.1
Myeloma	NS0
Isotype	IgG2b

## Applications

**The Abpromise guarantee** Our **Abpromise guarantee** covers the use of ab10829 in the following tested applications. The application notes include recommended starting dilutions; optimal dilutions/concentrations should be determined by the end user.

Application	Abreviews	Notes
Sandwich ELISA		Use a concentration of 5 µg/ml. Can be paired for Sandwich ELISA with <b>Rabbit polyclonal to HGF (ab24865)</b> . For sandwich ELISA, use this antibody as Capture at 5µg/ml with <b>ab24865</b> as Detection.

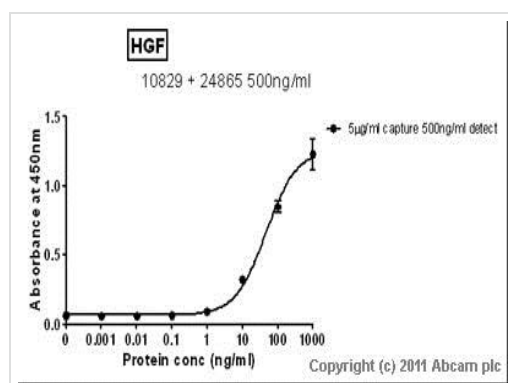
## Target

**Function** Potent mitogen for mature parenchymal hepatocyte cells, seems to be a hepatotrophic factor, and acts as a growth factor for a broad spectrum of tissues and cell types. Activating ligand for the receptor tyrosine kinase MET by binding to it and promoting its dimerization.

**Involvement in disease** Deafness, autosomal recessive, 39

**Sequence similarities** Belongs to the peptidase S1 family. Plasminogen subfamily. Contains 4 kringle domains. Contains 1 PAN domain. Contains 1 peptidase S1 domain.

## Images



Standard Curve for HGF (Analyte: **ab632**) dilution range 1pg/ml to 1ug/ml using Capture Antibody Mouse monoclonal [EGH2 4C12.1] to HGF (ab10829) at 5ug/ml and Detector Antibody Rabbit polyclonal to HGF (**ab24865**) at 0.5ug/ml.

Sandwich ELISA - Anti-HGF antibody [EGH2 4C12.1] (ab10829)

**Please note:** All products are "FOR RESEARCH USE ONLY. NOT FOR USE IN DIAGNOSTIC PROCEDURES"

## **Our Abpromise to you: Quality guaranteed and expert technical support**

---

- Replacement or refund for products not performing as stated on the datasheet
- Valid for 12 months from date of delivery
- Response to your inquiry within 24 hours
  
- We provide support in Chinese, English, French, German, Japanese and Spanish
- Extensive multi-media technical resources to help you
- We investigate all quality concerns to ensure our products perform to the highest standards

If the product does not perform as described on this datasheet, we will offer a refund or replacement. For full details of the Abpromise, please visit <https://www.abcam.com/abpromise> or contact our technical team.

## **Terms and conditions**

---

- Guarantee only valid for products bought direct from Abcam or one of our authorized distributors