


## Product datasheet

# Anti-HIPPI/IFT57 antibody ab154601

3 Images

### Overview

---

|                            |  |
|----------------------------|--|
| <b>Product name</b>        | Anti-HIPPI/IFT57 antibody  |
| <b>Description</b>         | Rabbit polyclonal to HIPPI/IFT57   |
| <b>Host species</b>        | Rabbit   |
| <b>Tested applications</b> | <b>Suitable for:</b> WB, IHC-P, ICC/IF   |
| <b>Species reactivity</b>  | <b>Reacts with:</b> Human<br><b>Predicted to work with:</b> Mouse, Rat, Cow    |
| <b>Immunogen</b>           | Recombinant fragment corresponding to Human HIPPI/IFT57 aa 227-429.<br>Database link: <a href="#">Q9NWB7</a>   |
| <b>Positive control</b>    | 293T, A431, H1299, HeLa, HepG2 and Raji whole cell lysates. HeLa cells.  |
| <b>General notes</b>       | Keep as concentrated solution.<br><br>The Life Science industry has been in the grips of a reproducibility crisis for a number of years. Abcam is leading the way in addressing this with our range of recombinant monoclonal antibodies and knockout edited cell lines for gold-standard validation. Please check that this product meets your needs before purchasing.<br><br>If you have any questions, special requirements or concerns, please send us an inquiry and/or contact our Support team ahead of purchase. Recommended alternatives for this product can be found below, along with publications, customer reviews and Q&As |

### Properties

---

|                             |   |
|-----------------------------|---|
| <b>Form</b>                 | Liquid  |
| <b>Storage instructions</b> | Shipped at 4°C. Upon delivery aliquot. Store at -20°C or -80°C. Avoid freeze / thaw cycle.  |
| <b>Storage buffer</b>       | pH: 7.00<br>Preservative: 0.01% Thimerosal (merthiolate)<br>Constituents: 1.21% Tris, 0.75% Glycine, 10% Glycerol (glycerin, glycerine) |
| <b>Purity</b>               | Immunogen affinity purified   |
| <b>Clonality</b>            | Polyclonal  |
| <b>Isotype</b>              | IgG   |

### Applications

## Applications

### The Abpromise guarantee

Our **Abpromise guarantee** covers the use of ab154601 in the following tested applications.

The application notes include recommended starting dilutions; optimal dilutions/concentrations should be determined by the end user.

| Application | Abreviews | Notes   |
|-------------|-----------|---|
| WB          |           | 1/500 - 1/3000. Predicted molecular weight: 49 kDa.   |
| IHC-P       |           | 1/100 - 1/1000. Perform heat mediated antigen retrieval before commencing with IHC staining protocol using 10mM Citrate buffer (pH6.0) or Tris-EDTA buffer (pH8.0). |
| ICC/IF      |           | 1/100 - 1/1000.   |

## Target

### Function

Required for the formation of cilia. Plays an indirect role in sonic hedgehog signaling, cilia being required for all activity of the hedgehog pathway (By similarity). Has pro-apoptotic function via its interaction with HIP1, leading to recruit caspase-8 (CASP8) and trigger apoptosis. Has the ability to bind DNA sequence motif 5'-AAAGACATG-3' present in the promoter of caspase genes such as CASP1, CASP8 and CASP10, suggesting that it may act as a transcription regulator; however the relevance of such function remains unclear.

### Tissue specificity

Present in many tissues such as brain, thymus, lymph node, lung, liver, skin and kidney (at protein level).

### Sequence similarities

Belongs to the IFT57 family.

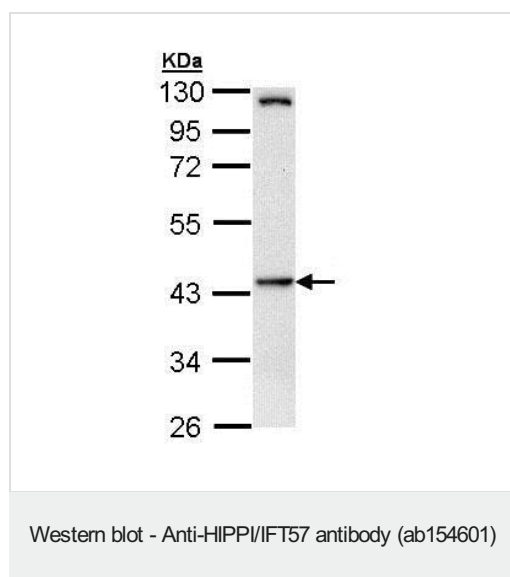
### Domain

The pseudo DED region (pDED) mediates the interaction with HIP1.

### Cellular localization

Cytoplasm > cytoskeleton > cilium basal body. Concentrates within the inner segment of cilia.

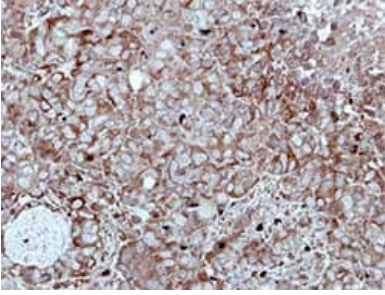
## Images



Anti-HIPPI/IFT57 antibody (ab154601) at 1/1000 dilution + Raji whole cell lysate at 30 µg

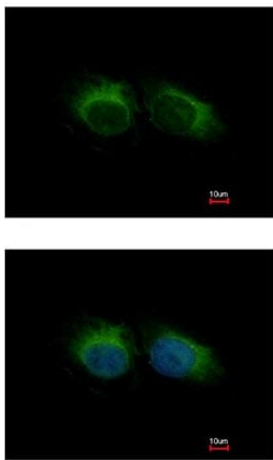
**Predicted band size: 49 kDa**

10% SDS PAGE



Immunohistochemical analysis of paraffin-embedded H661 xenograft labeling HIPPI/IFT57 with ab154601 at 1/500 dilution.

Immunohistochemistry (Formalin/PFA-fixed paraffin-embedded sections) - Anti-HIPPI/IFT57 antibody (ab154601)



Immunofluorescent analysis of methanol-fixed HeLa cells labeling HIPPI/IFT57 with ab154601 at 1/200 dilution. Lower panel co-stained with Hoechst 33342.

Immunocytochemistry/ Immunofluorescence - Anti-HIPPI/IFT57 antibody (ab154601)

**Please note:** All products are "FOR RESEARCH USE ONLY. NOT FOR USE IN DIAGNOSTIC PROCEDURES"

### Our Abpromise to you: Quality guaranteed and expert technical support

---

- Replacement or refund for products not performing as stated on the datasheet
- Valid for 12 months from date of delivery
- Response to your inquiry within 24 hours
- We provide support in Chinese, English, French, German, Japanese and Spanish
- Extensive multi-media technical resources to help you
- We investigate all quality concerns to ensure our products perform to the highest standards

If the product does not perform as described on this datasheet, we will offer a refund or replacement. For full details of the Abpromise, please visit <https://www.abcam.com/abpromise> or contact our technical team.

### Terms and conditions

---

- Guarantee only valid for products bought direct from Abcam or one of our authorized distributors