

## Product datasheet

# Anti-HLA Class I antibody [MEM-147] ab9090

[1 References](#) [3 Images](#)

### Overview

---

<b>Product name</b>	Anti-HLA Class I antibody [MEM-147]
<b>Description</b>	Mouse monoclonal [MEM-147] to HLA Class I
<b>Host species</b>	Mouse
<b>Specificity</b>	Reacts with all human classical MHC Class I molecules in native cell-surface forms. Positive in immunoblotting with many (not all) MHC Class I allelic forms (e.g. it recognizes native HLA-A2 in cytofluorometry and immunoprecipitation but not in Western blotting). Positive in Western blotting (non-reducing conditions) with most HLA-B and HLA-C molecules, but not HLA-A. Epitope specificity is very similar to classical antibody W6/32 ( <a href="#">ab7855</a> ).
<b>Tested applications</b>	<b>Suitable for:</b> Flow Cyt, WB
<b>Species reactivity</b>	<b>Reacts with:</b> Human
<b>Immunogen</b>	Tissue, cells or virus corresponding to HLA Class I. PHA-activated peripheral blood lymphocytes
<b>General notes</b>	<p>The Life Science industry has been in the grips of a reproducibility crisis for a number of years. Abcam is leading the way in addressing this with our range of recombinant monoclonal antibodies and knockout edited cell lines for gold-standard validation. Please check that this product meets your needs before purchasing.</p> <p>If you have any questions, special requirements or concerns, please send us an inquiry and/or contact our Support team ahead of purchase. Recommended alternatives for this product can be found below, along with publications, customer reviews and Q&amp;As</p>

### Properties

---

<b>Form</b>	Liquid
<b>Storage instructions</b>	Shipped at 4°C. Store at +4°C short term (1-2 weeks). Upon delivery aliquot. Store at -20°C or -80°C. Avoid freeze / thaw cycle.
<b>Storage buffer</b>	pH: 7.40 Preservative: 0.097% Sodium azide Constituent: PBS
<b>Purity</b>	Protein A purified
<b>Purification notes</b>	Purified from TCS. Purity >95% by SDS-PAGE.
<b>Clonality</b>	Monoclonal
<b>Clone number</b>	MEM-147

Isotype

IgG1

## Applications

### The Abpromise guarantee

Our **Abpromise guarantee** covers the use of ab9090 in the following tested applications.

The application notes include recommended starting dilutions; optimal dilutions/concentrations should be determined by the end user.

Application	Abreviews	Notes
Flow Cyt		Use 1µg for 10 <sup>6</sup> cells. <b>ab170190</b> - Mouse monoclonal IgG1, is suitable for use as an isotype control with this antibody.
WB		1/100. Use non-reducing conditions.

## Target

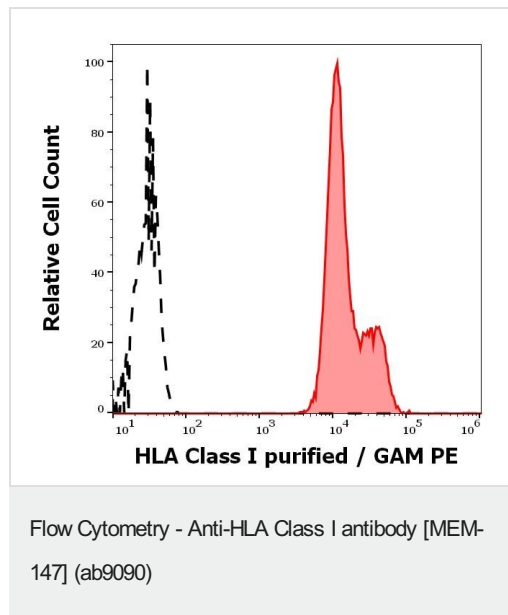
### Relevance

HLA Class I is involved in the presentation of foreign antigens to the immune system.

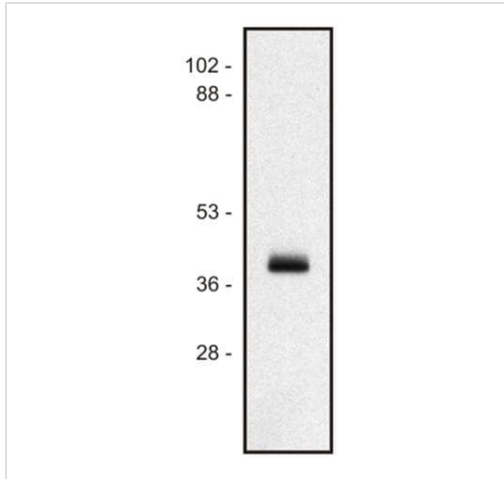
### Cellular localization

Plasma membrane

## Images



Flow cytometric analysis of human leukocytes stained using ab9090 (concentration in sample 1.67 µg/ml, GAM PE, red-filled) from human leukocytes unstained by primary antibody (GAM PE, black-dashed).



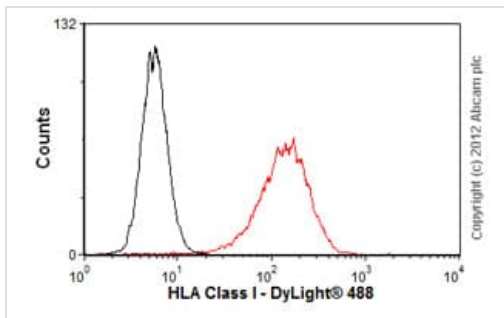
Western blot - Anti-HLA Class I antibody [MEM-147] (ab9090)

Anti-HLA Class I antibody [MEM-147] (ab9090) at 1/100 dilution + Human Ramos B cell line lysates (1% laurylmaltoside)

### Secondary

Goat anti-mouse IgG (H+L)-HRP conjugate

Performed under non-reducing conditions.



Flow Cytometry - Anti-HLA Class I antibody [MEM-147] (ab9090)

Overlay histogram showing Jurkat cells stained with ab9090 (red line). The cells were fixed with 4% paraformaldehyde (10 min) and incubated in 1x PBS / 10% normal goat serum / 0.3M glycine to block non-specific protein-protein interactions. The cells were then incubated with the antibody (ab9090, 1 µg/1x10<sup>6</sup> cells) for 30 min at 22°C. The secondary antibody used was DyLight® 488 goat anti-mouse IgG (H+L) ([ab96879](#)) at 1/500 dilution for 30 min at 22°C.

Isotype control antibody (black line) was mouse IgG1 [ICIGG1] ([ab91353](#), 2 µg/1x10<sup>6</sup> cells) used under the same conditions.

Acquisition of >5,000 events was performed. This antibody gave a positive result in 80% methanol (5 min) fixed Jurkat cells used under the same conditions.

Please note that Abcam do not have any data for use of this antibody on non-fixed cells. We welcome any customer feedback.

**Please note:** All products are "FOR RESEARCH USE ONLY. NOT FOR USE IN DIAGNOSTIC PROCEDURES"

### Our Abpromise to you: Quality guaranteed and expert technical support

- Replacement or refund for products not performing as stated on the datasheet
- Valid for 12 months from date of delivery
- Response to your inquiry within 24 hours

- We provide support in Chinese, English, French, German, Japanese and Spanish
- Extensive multi-media technical resources to help you
- We investigate all quality concerns to ensure our products perform to the highest standards

If the product does not perform as described on this datasheet, we will offer a refund or replacement. For full details of the Abpromise, please visit <https://www.abcam.com/abpromise> or contact our technical team.

### **Terms and conditions**

---

- Guarantee only valid for products bought direct from Abcam or one of our authorized distributors