



Product datasheet

Anti-HLA Class II DRB1 antibody ab235953

2 Images

Overview

Product name	Anti-HLA Class II DRB1 antibody
Description	Rabbit polyclonal to HLA Class II DRB1
Host species	Rabbit
Tested applications	Suitable for: ICC/IF, WB
Species reactivity	Reacts with: Human
Immunogen	Recombinant full length protein corresponding to Human HLA Class II DRB1 aa 1 to the C-terminus. Database link: Q95IE3
	 Run BLAST with  Run BLAST with
Positive control	WB: A-375 and Raji whole cell lysates. ICC/IF: A-375 cells.
General notes	<p>The Life Science industry has been in the grips of a reproducibility crisis for a number of years. Abcam is leading the way in addressing this with our range of recombinant monoclonal antibodies and knockout edited cell lines for gold-standard validation. Please check that this product meets your needs before purchasing.</p> <p>If you have any questions, special requirements or concerns, please send us an inquiry and/or contact our Support team ahead of purchase. Recommended alternatives for this product can be found below, along with publications, customer reviews and Q&As</p>

Properties

Form	Liquid
Storage instructions	Shipped at 4°C. Store at +4°C short term (1-2 weeks). Upon delivery aliquot. Store at -20°C long term. Avoid freeze / thaw cycle.
Storage buffer	pH: 7.40 Preservative: 0.03% Proclin 300 Constituents: 50% Glycerol (glycerin, glycerine), PBS
Purity	Protein G purified
Purification notes	Purity >95%.
Clonality	Polyclonal
Isotype	IgG

Applications

The Abpromise guarantee

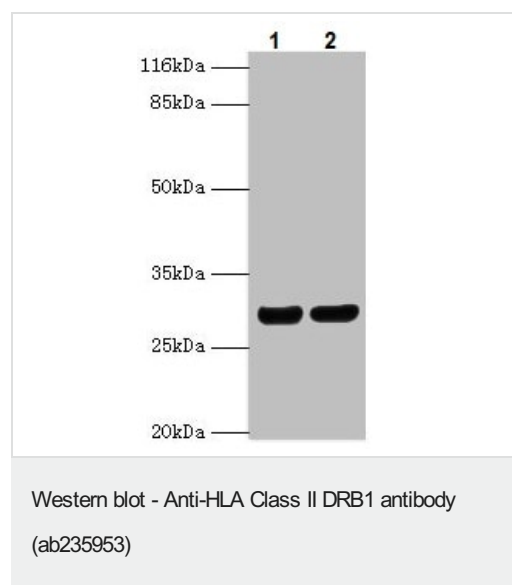
Our **Abpromise guarantee** covers the use of ab235953 in the following tested applications.

The application notes include recommended starting dilutions; optimal dilutions/concentrations should be determined by the end user.

Application	Abreviews	Notes
ICC/IF		1/50 - 1/200.
WB		1/1000 - 1/5000. Predicted molecular weight: 30 kDa.

Target

Images



All lanes : Anti-HLA Class II DRB1 antibody (ab235953) at 1/1000 dilution

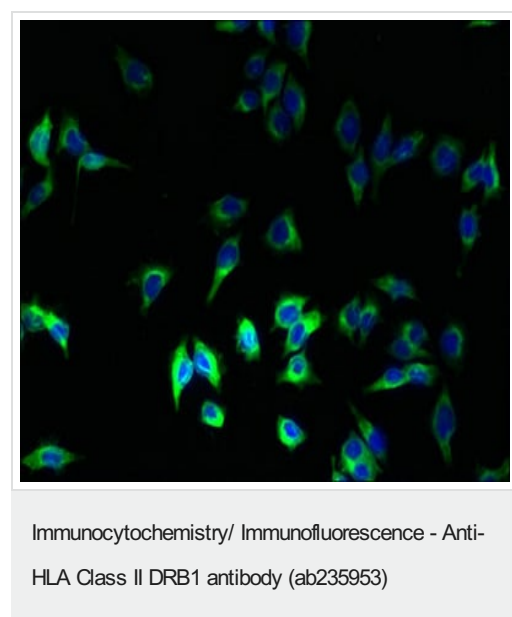
Lane 1 : A-375 (Human malignant melanoma cell line) whole cell lysate

Lane 2 : Raji (Human Burkitt's lymphoma cell line) whole cell lysate

Secondary

All lanes : Goat polyclonal to rabbit IgG at 1/10000 dilution

Predicted band size: 30 kDa



A-375 (Human malignant melanoma cell line) cells stained for HLA Class II DRB1 (Green) using ab235953 at 1/100 dilution in ICC/IF, followed by Alexa Fluor 488[®] conjugated Goat Anti-Rabbit IgG (H+L).

Please note: All products are "FOR RESEARCH USE ONLY. NOT FOR USE IN DIAGNOSTIC PROCEDURES"

Our Abpromise to you: Quality guaranteed and expert technical support

- Replacement or refund for products not performing as stated on the datasheet
- Valid for 12 months from date of delivery
- Response to your inquiry within 24 hours
- We provide support in Chinese, English, French, German, Japanese and Spanish
- Extensive multi-media technical resources to help you
- We investigate all quality concerns to ensure our products perform to the highest standards

If the product does not perform as described on this datasheet, we will offer a refund or replacement. For full details of the Abpromise, please visit <https://www.abcam.com/abpromise> or contact our technical team.

Terms and conditions

- Guarantee only valid for products bought direct from Abcam or one of our authorized distributors