




Product datasheet

Anti-HNF1 alpha antibody ab176818

1 Image

Overview

Product name	Anti-HNF1 alpha antibody
Description	Rabbit polyclonal to HNF1 alpha
Host species	Rabbit
Tested applications	Suitable for: IP
Species reactivity	Reacts with: Human Predicted to work with: Guinea pig, Cow, Pig, Chimpanzee, Rhesus monkey, Gorilla, Chinese hamster, Orangutan 
Immunogen	Synthetic peptide within Human HNF1 aa 50-100. The exact sequence is proprietary. NP_000536.5 Sequence: CGGGRGELAELPNGLGETRGSEDETDDDGEDFTPPILKE LENLSPEEAAH Q Database link: P20823 <div>  Run BLAST with  Run BLAST with </div>
Positive control	IP: HepG2 whole cell lysate.
General notes	<p>The Life Science industry has been in the grips of a reproducibility crisis for a number of years. Abcam is leading the way in addressing this with our range of recombinant monoclonal antibodies and knockout edited cell lines for gold-standard validation. Please check that this product meets your needs before purchasing.</p> <p>If you have any questions, special requirements or concerns, please send us an inquiry and/or contact our Support team ahead of purchase. Recommended alternatives for this product can be found below, along with publications, customer reviews and Q&As</p>

Properties

Form	Liquid
Storage instructions	Shipped at 4°C. Store at +4°C short term (1-2 weeks). Upon delivery aliquot. Store at -20°C long term. Avoid freeze / thaw cycle.
Storage buffer	pH: 7 Preservative: 0.09% Sodium azide Constituent: 99% Tris citrate/phosphate

	pH 7-8
Purity	Immunogen affinity purified
Purification notes	ab176818 was affinity purified using an epitope specific to HNF1 immobilized on solid support.
Clonality	Polyclonal
Isotype	IgG

Applications

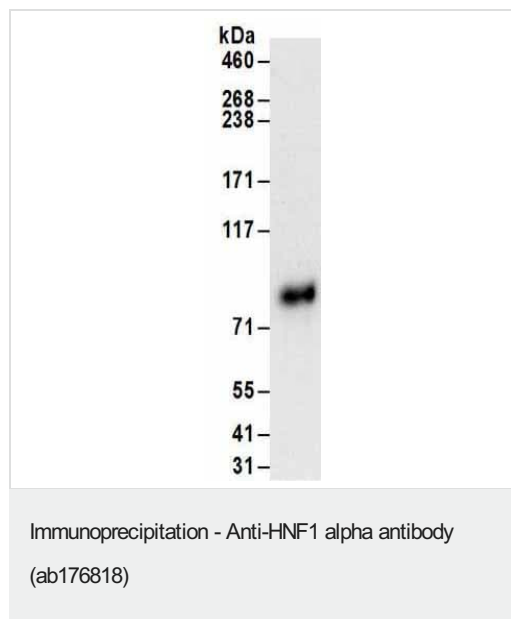
The Abpromise guarantee Our **Abpromise guarantee** covers the use of ab176818 in the following tested applications. The application notes include recommended starting dilutions; optimal dilutions/concentrations should be determined by the end user.

Application	Abreviews	Notes
IP		Use at 2-10 µg/mg of lysate.

Target

Function	Transcriptional activator that regulates the tissue specific expression of multiple genes, especially in pancreatic islet cells and in liver. Required for the expression of several liver specific genes. Binds to the inverted palindrome 5'-GTTAATNATTAAC-3'.
Tissue specificity	Liver.
Involvement in disease	<p>Defects in HNF1A are a cause of hepatic adenomas familial (HEPAF) [MIM:142330]. Hepatic adenomas are rare benign liver tumors of presumable epithelial origin that develop in an otherwise normal liver. Hepatic adenomas may be single or multiple. They consist of sheets of well-differentiated hepatocytes that contain fat and glycogen and can produce bile. Bile ducts or portal areas are absent. Kupffer cells, if present, are reduced in number and are non-functional. Conditions associated with adenomas are insulin-dependent diabetes mellitus and glycogen storage diseases (types 1 and 3). Note=Bi-allelic inactivation of HNF1A, whether sporadic or associated with MODY3, may be an early step in the development of some hepatocellular carcinomas.</p> <p>Defects in HNF1A are the cause of maturity-onset diabetes of the young type 3 (MODY3) [MIM:600496]; also symbolized MODY-3. MODY is a form of diabetes that is characterized by an autosomal dominant mode of inheritance, onset in childhood or early adulthood (usually before 25 years of age), a primary defect in insulin secretion and frequent insulin-independence at the beginning of the disease.</p> <p>Defects in HNF1A are the cause of susceptibility to diabetes mellitus insulin-dependent type 20 (IDDM20) [MIM:612520]. IDDM20 is a multifactorial disorder of glucose homeostasis that is characterized by susceptibility to ketoacidosis in the absence of insulin therapy. Clinical features are polydipsia, polyphagia and polyuria which result from hyperglycemia-induced osmotic diuresis and secondary thirst. These features can result in long-term complications that affect the eyes, kidneys, nerves, and blood vessels.</p>
Sequence similarities	<p>Belongs to the HNF1 homeobox family.</p> <p>Contains 1 homeobox DNA-binding domain.</p>
Cellular localization	Nucleus.

Images



Detection of HNF1 by Western Blot of Immunoprecipitate.
Anti-HNF1 antibody at 1 µg/ml labeling HNF1 in HepG2 whole cell lysate immunoprecipitated using ab176818 at 6 µg/mg lysate (1 mg/IP; 20% of IP loaded/lane). Detection: Chemiluminescence with exposure time of 3 seconds.

Please note: All products are "FOR RESEARCH USE ONLY. NOT FOR USE IN DIAGNOSTIC PROCEDURES"

Our Abpromise to you: Quality guaranteed and expert technical support

- Replacement or refund for products not performing as stated on the datasheet
- Valid for 12 months from date of delivery
- Response to your inquiry within 24 hours
- We provide support in Chinese, English, French, German, Japanese and Spanish
- Extensive multi-media technical resources to help you
- We investigate all quality concerns to ensure our products perform to the highest standards

If the product does not perform as described on this datasheet, we will offer a refund or replacement. For full details of the Abpromise, please visit <https://www.abcam.com/abpromise> or contact our technical team.

Terms and conditions

- Guarantee only valid for products bought direct from Abcam or one of our authorized distributors