


Product datasheet

Anti-HPDL antibody [EPR11691] - C-terminal ab174841

KO VALIDATED Recombinant RabMAb

4 Images

Overview

Product name	Anti-HPDL antibody [EPR11691] - C-terminal
Description	Rabbit monoclonal [EPR11691] to HPDL - C-terminal
Host species	Rabbit
Tested applications	Suitable for: WB, IP Unsuitable for: Flow Cyt, ICC/IF or IHC
Species reactivity	Reacts with: Human Predicted to work with: Rat  Does not react with: Mouse
Immunogen	Synthetic peptide. This information is proprietary to Abcam and/or its suppliers.
Positive control	WB: Caco-2, MCF7 and HeLa cell lysates; Human fetal heart lysates.
General notes	<p>This product is a recombinant monoclonal antibody, which offers several advantages including:</p> <ul style="list-style-type: none"> - High batch-to-batch consistency and reproducibility - Improved sensitivity and specificity - Long-term security of supply - Animal-free production <p>For more information see here.</p> <p>Our RabMAb[®] technology is a patented hybridoma-based technology for making rabbit monoclonal antibodies. For details on our patents, please refer to RabMAb[®] patents.</p>

Properties

Form	Liquid
Storage instructions	Shipped at 4°C. Store at +4°C short term (1-2 weeks). Upon delivery aliquot. Store at -20°C long term. Avoid freeze / thaw cycle.
Storage buffer	pH: 7.20 Preservative: 0.01% Sodium azide Constituents: 9% PBS, 40% Glycerol (glycerin, glycerine), 0.05% BSA, 50% Tissue culture supernatant
Purity	Tissue culture supernatant
Clonality	Monoclonal

Clone number EPR11691

Isotype IgG

Applications

The Abpromise guarantee Our **Abpromise guarantee** covers the use of ab174841 in the following tested applications. The application notes include recommended starting dilutions; optimal dilutions/concentrations should be determined by the end user.

Application	Abreviews	Notes
WB		1/1000 - 1/10000. Predicted molecular weight: 39 kDa.
IP		1/10 - 1/100.

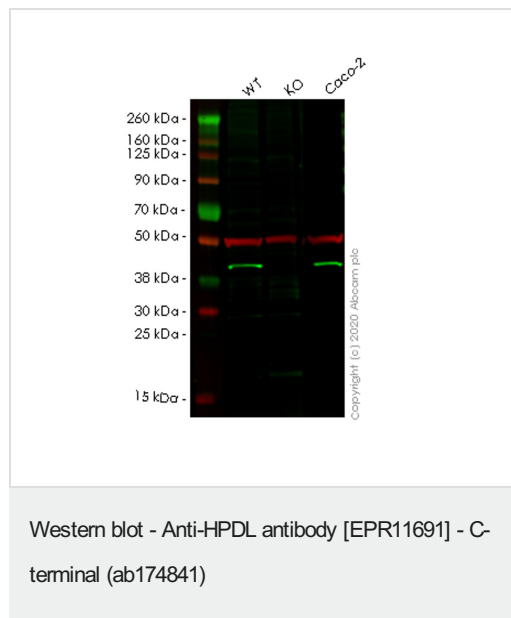
Application notes Is unsuitable for Flow Cyt, ICC/IF or IHC.

Target

Function May have dioxygenase activity.

Sequence similarities Belongs to the 4HPPD family.

Images



All lanes : Anti-HPDL antibody [EPR11691] - C-terminal (ab174841) at 1/1000 dilution

Lane 1 : Wild-type HeLa cell lysate

Lane 2 : HPDL knockout HeLa cell lysate

Lane 3 : Caco-2 cell lysate

Lysates/proteins at 20 µg per lane.

Secondary

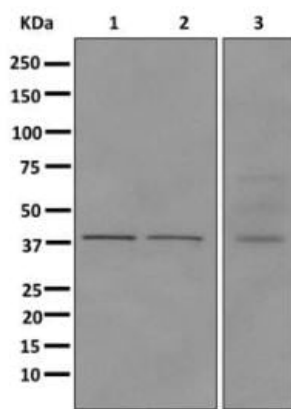
All lanes : Goat anti-Rabbit IgG H&L (IRDye® 800CW) preadsorbed ([ab216773](#)) at 1/10000 dilution

Predicted band size: 39 kDa

Observed band size: 39 kDa

Lanes 1-3: Merged signal (red and green). Green - ab174841 observed at 39 kDa. Red - loading control [ab7291](#) observed at 50 kDa.

ab174841 Anti-HPDL antibody [EPR11691] - C-terminal was shown to specifically react with HPDL in wild-type HeLa cells. Loss of signal was observed when knockout cell line **ab265868** (knockout cell lysate **ab257995**) was used. Wild-type and HPDL knockout samples were subjected to SDS-PAGE. ab174841 and Anti-alpha Tubulin antibody [DM1A] - Loading Control (**ab7291**) were incubated at room temperature for 2.5 hours at 1 in 1000 dilution and 1 in 20000 dilution respectively. Blots were developed with Goat anti-Rabbit IgG H&L (IRDye® 800CW) preadsorbed (**ab216773**) and Goat anti-Mouse IgG H&L (IRDye® 680RD) preadsorbed (**ab216776**) secondary antibodies at 1 in 20000 dilution for 1 hour at room temperature before imaging.



Western blot - Anti-HPDL antibody [EPR11691] - C-terminal (ab174841)

All lanes : Anti-HPDL antibody [EPR11691] - C-terminal (ab174841) at 1/1000 dilution

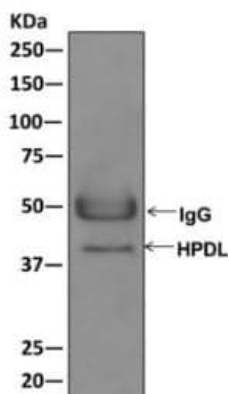
Lane 1 : MCF7 cell lysate

Lane 2 : HeLa cell lysate

Lane 3 : Human fetal heart lysate

Lysates/proteins at 10 µg per lane.

Predicted band size: 39 kDa



Immunoprecipitation - Anti-HPDL antibody [EPR11691] - C-terminal (ab174841)

Western blot analysis on immunoprecipitation pellet from MCF7 cell lysate, labeling HPDL, immunoprecipitated using ab174841 at 1/10 dilution.

Why choose a recombinant antibody?



Research with confidence
Consistent and reproducible results



Long-term and scalable supply
Recombinant technology



Success from the first experiment
Confirmed specificity



Ethical standards compliant
Animal-free production

Anti-HPDL antibody [EPR11691] - C-terminal
(ab174841)

Please note: All products are "FOR RESEARCH USE ONLY. NOT FOR USE IN DIAGNOSTIC PROCEDURES"

Our Abpromise to you: Quality guaranteed and expert technical support

- Replacement or refund for products not performing as stated on the datasheet
- Valid for 12 months from date of delivery
- Response to your inquiry within 24 hours
- We provide support in Chinese, English, French, German, Japanese and Spanish
- Extensive multi-media technical resources to help you
- We investigate all quality concerns to ensure our products perform to the highest standards

If the product does not perform as described on this datasheet, we will offer a refund or replacement. For full details of the Abpromise, please visit <https://www.abcam.com/abpromise> or contact our technical team.

Terms and conditions

- Guarantee only valid for products bought direct from Abcam or one of our authorized distributors