


Product datasheet

HRP Anti-beta Actin antibody [mAbcam 8226] - Loading Control ab20272

★★★★★ [17 Abreviews](#) [271 References](#) [3 Images](#)

Overview

Product name	HRP Anti-beta Actin antibody [mAbcam 8226] - Loading Control
Description	HRP Mouse monoclonal [mAbcam 8226] to beta Actin - Loading Control
Host species	Mouse
Conjugation	HRP
Tested applications	Suitable for: WB
Species reactivity	Reacts with: Mouse, Rat, Human Predicted to work with: Sheep, Rabbit, Horse, Chicken, Guinea pig, Cow, Dog, Pig, Drosophila melanogaster, Monkey, African green monkey, Chinese hamster 
Immunogen	Synthetic peptide. This information is proprietary to Abcam and/or its suppliers. (Peptide available as ab13772)
Positive control	HeLa whole cell lysate, 3T3 whole cell lysate, Rat brain lysate
General notes	<p>The Life Science industry has been in the grips of a reproducibility crisis for a number of years. Abcam is leading the way in addressing this with our range of recombinant monoclonal antibodies and knockout edited cell lines for gold-standard validation. Please check that this product meets your needs before purchasing.</p> <p>If you have any questions, special requirements or concerns, please send us an inquiry and/or contact our Support team ahead of purchase. Recommended alternatives for this product can be found below, along with publications, customer reviews and Q&As</p>

Properties

Form	Liquid
Storage instructions	Shipped at 4°C. Store at +4°C short term (1-2 weeks). Upon delivery aliquot. Store at -20°C. Avoid freeze / thaw cycle. Store In the Dark.
Storage buffer	pH: 7.40 Preservative: 0.1% Proclin 300 Solution Constituents: PBS, 1% BSA, 30% Glycerol (glycerin, glycerine)
Purity	IgG fraction
Clonality	Monoclonal

Clone number	mAbcam 8226
Myeloma	Sp2/0-Ag14
Isotype	IgG1
Light chain type	kappa

Applications

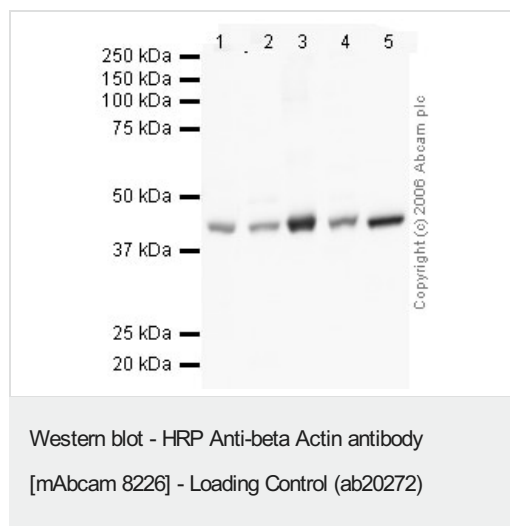
The Abpromise guarantee Our **Abpromise guarantee** covers the use of ab20272 in the following tested applications. The application notes include recommended starting dilutions; optimal dilutions/concentrations should be determined by the end user.

Application	Abreviews	Notes
WB	★★★★★ (17)	1/5000. Detects a band of approximately 42 kDa (predicted molecular weight: 42 kDa). Can be blocked with Human beta Actin peptide (ab13772) . Abcam strongly recommends blocking and incubation using 5% BSA as we have found that use of 5% milk seems to drastically reduce the intensity of the signal obtained. Please refer to WB image for further details.

Target

Function	Actins are highly conserved proteins that are involved in various types of cell motility and are ubiquitously expressed in all eukaryotic cells.
Involvement in disease	Defects in ACTB are a cause of dystonia juvenile-onset (DYTJ) [MIM:607371]. DYTJ is a form of dystonia with juvenile onset. Dystonia is defined by the presence of sustained involuntary muscle contraction, often leading to abnormal postures. DYTJ patients manifest progressive, generalized, dopa-unresponsive dystonia, developmental malformations and sensory hearing loss.
Sequence similarities	Belongs to the actin family.
Post-translational modifications	ISGylated.
Cellular localization	Cytoplasm > cytoskeleton. Localized in cytoplasmic mRNP granules containing untranslated mRNAs.

Images



All lanes : HRP Anti-beta Actin antibody [mAbcam 8226] - Loading Control (ab20272) at 1/5000 dilution

Lane 1 : human testis lysate

Lane 2 : human brain lysate

Lane 3 : human tonsil lysate

Lane 4 : mouse brain lysate

Lane 5 : mouse spleen lysate

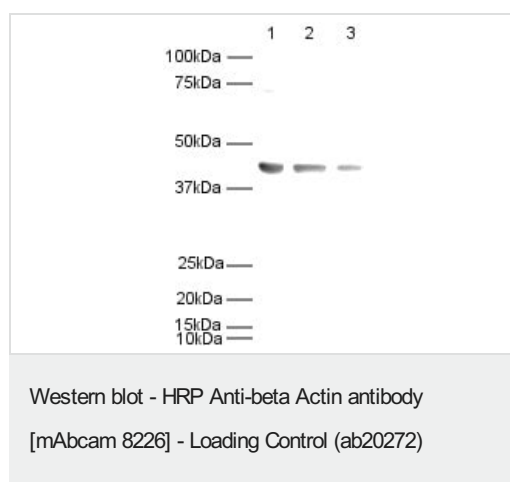
Lysates/proteins at 20 µg per lane.

Developed using the ECL technique.

Performed under reducing conditions.

Predicted band size: 42 kDa

Exposure time: 2 minutes



All lanes : HRP Anti-beta Actin antibody [mAbcam 8226] - Loading Control (ab20272) at 1/5000 dilution

Lane 1 : HeLa whole cell lysate

Lane 2 : 3T3 whole cell lysate

Lane 3 : Rat brain lysate

Lysates/proteins at 20 µg per lane.

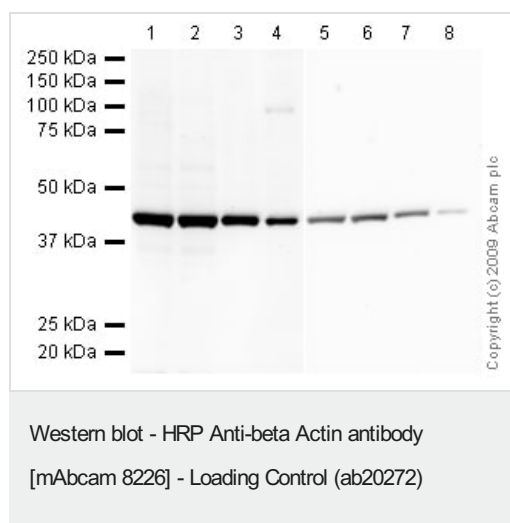
Developed using the ECL technique.

Performed under reducing conditions.

Predicted band size: 42 kDa

Observed band size: 42 kDa

Exposure time: 30 seconds



Lanes 1-4 : HRP Anti-beta Actin antibody [mAbcam 8226] - Loading Control (ab20272) at 1/5000 dilution (Blocked in 5% BSA)

Lanes 5-8 : HRP Anti-beta Actin antibody [mAbcam 8226] - Loading Control (ab20272) at 1/5000 dilution (Blocked in 5% MILK)

Lanes 1 & 5 : HeLa (Human epithelial carcinoma cell line) Whole Cell Lysate

Lanes 2 & 6 : Jurkat (Human T cell lymphoblast-like cell line) Whole Cell Lysate

Lanes 3 & 7 : NIH/3T3 whole cell lysate ([ab7179](#))

Lanes 4 & 8 : PC12 (Rat adrenal pheochromocytoma cell line) Whole Cell Lysate

Lysates/proteins at 10 µg per lane.

Developed using the ECL technique.

Performed under reducing conditions.

Predicted band size: 42 kDa

Observed band size: 42 kDa

Exposure time: 1 minute

The membrane 1-4 was blocked in 5% BSA (1 hour). The membrane 5-8 was blocked in 5% MILK (1 hour). Abcam routinely uses 5% BSA to block, however following recent customer feedback our labs investigated the effect of 5% milk blocking. We can now confirm that milk is not a suitable blocking agent for this antibody and significantly decreases the signal on the membrane.

Please note: All products are "FOR RESEARCH USE ONLY. NOT FOR USE IN DIAGNOSTIC PROCEDURES"

Our Abpromise to you: Quality guaranteed and expert technical support

- Replacement or refund for products not performing as stated on the datasheet

- Valid for 12 months from date of delivery
- Response to your inquiry within 24 hours
- We provide support in Chinese, English, French, German, Japanese and Spanish
- Extensive multi-media technical resources to help you
- We investigate all quality concerns to ensure our products perform to the highest standards

If the product does not perform as described on this datasheet, we will offer a refund or replacement. For full details of the Abpromise, please visit <https://www.abcam.com/abpromise> or contact our technical team.

Terms and conditions

- Guarantee only valid for products bought direct from Abcam or one of our authorized distributors