

## Product datasheet

# HRP Anti-CHREBP antibody ab81958

★★★★★ [1 Abreviews](#) [5 References](#) [4 Images](#)

### Overview

---

<b>Product name</b>	HRP Anti-CHREBP antibody
<b>Description</b>	HRP Rabbit polyclonal to CHREBP
<b>Host species</b>	Rabbit
<b>Conjugation</b>	HRP
<b>Specificity</b>	A customer has observed some cross-reactivity with MLX-interacting protein (Q9HAP2). Although the exact sequence is proprietary, the immunogen for ab81958 shows 75% homology with this protein.
<b>Tested applications</b>	<b>Suitable for:</b> WB, IHC-P, ICC/IF
<b>Species reactivity</b>	<b>Reacts with:</b> Human
<b>Immunogen</b>	Synthetic peptide within Human CHREBP aa 800 to the C-terminus (C terminal). The exact immunogen sequence used to generate this antibody is proprietary information. If additional detail on the immunogen is needed to determine the suitability of the antibody for your needs, please <b>contact</b> our Scientific Support team to discuss your requirements. NP_116569.1 Database link: <a href="#">Q9NP71</a>
<b>Positive control</b>	Human hepatocyte lysate, human hepatocytes, liver nuclear extracts from well fed rats, and colon epithelium.
<b>General notes</b>	<p>The Life Science industry has been in the grips of a reproducibility crisis for a number of years. Abcam is leading the way in addressing this with our range of recombinant monoclonal antibodies and knockout edited cell lines for gold-standard validation. Please check that this product meets your needs before purchasing.</p> <p>If you have any questions, special requirements or concerns, please send us an inquiry and/or contact our Support team ahead of purchase. Recommended alternatives for this product can be found below, along with publications, customer reviews and Q&amp;As</p>

### Properties

---

<b>Form</b>	Liquid
<b>Storage instructions</b>	Shipped at 4°C. Store at +4°C.
<b>Storage buffer</b>	Constituent: PBS
<b>Purity</b>	Immunogen affinity purified
<b>Purification notes</b>	Purified rabbit antisera.

<b>Clonality</b>	Polyclonal
<b>Isotype</b>	IgG

## Applications

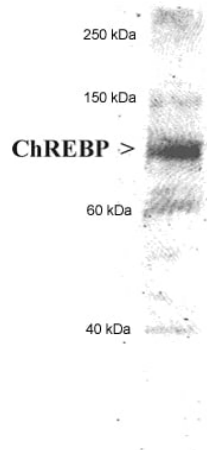
**The Abpromise guarantee** Our **Abpromise guarantee** covers the use of ab81958 in the following tested applications. The application notes include recommended starting dilutions; optimal dilutions/concentrations should be determined by the end user.

Application	Abreviews	Notes
<b>WB</b>	★★★★★ (1)	Use at an assay dependent dilution. Predicted molecular weight: 95 kDa.
<b>IHC-P</b>		Use at an assay dependent dilution.
<b>ICC/IF</b>		1/100 - 1/500.

## Target

<b>Function</b>	Transcriptional repressor. Binds to the canonical and non-canonical E box sequences 5'-CACGTG-3'.
<b>Tissue specificity</b>	Expressed in liver, heart, kidney, cerebellum and intestinal tissues.
<b>Involvement in disease</b>	Note=WBSCR14 is located in the Williams-Beuren syndrome (WBS) critical region. WBS results from a hemizygous deletion of several genes on chromosome 7q11.23, thought to arise as a consequence of unequal crossing over between highly homologous low-copy repeat sequences flanking the deleted region. Haploinsufficiency of WBSCR14 may be the cause of certain cardiovascular and musculo-skeletal abnormalities observed in the disease.
<b>Sequence similarities</b>	Contains 1 basic helix-loop-helix (bHLH) domain.
<b>Cellular localization</b>	Nucleus.

## Images



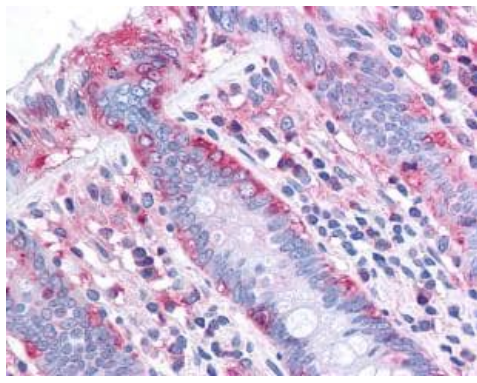
Western blot - HRP Anti-CHREBP antibody (ab81958)

anti CHREBP (unconjugated form of ab81958) + human hepatocyte lysate at 20 µg

**Predicted band size:** 95 kDa

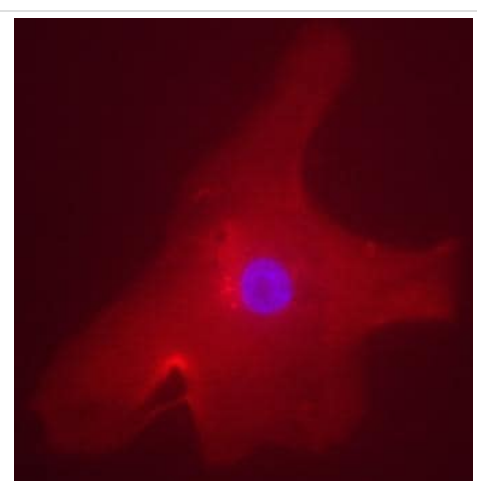
**Observed band size:** 95 kDa

5-10 second film exposure.



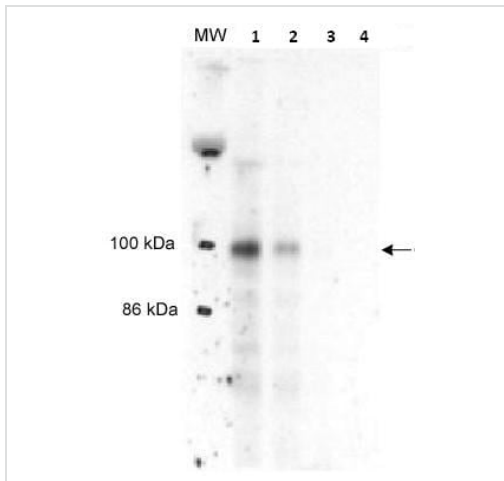
Immunohistochemistry (Formalin/PFA-fixed paraffin-embedded sections) - HRP Anti-CHREBP antibody (ab81958)

anti CHREBP (unconjugated form of ab81958), staining CHREBP in human colon epithelium (40X) by immunohistochemistry.



Immunocytochemistry/ Immunofluorescence - HRP Anti-CHREBP antibody (ab81958)

anti CHREBP (unconjugated form of ab81958), at a 1/100 dilution, staining CHREBP in human hepatocyte by Immunofluorescence. Overlay staining of ChREBP (rhodamine red) and DAPI nuclear staining (blue).



Western blot - HRP Anti-CHREBP antibody  
(ab81958)

**All lanes** : anti CHREBP (unconjugated form of ab81958), at 1/1000 dilution

**Lane 1** : liver nuclear extracts from well fed rats at 10 µg

**Lane 2** : liver nuclear extracts from well fed rats at 5 µg

**Lane 3** : liver nuclear extracts from well fed rats at 1 µg

**Lane 4** : liver nuclear extracts from well fed rats at 0.5 µg

**Predicted band size:** 95 kDa

**Observed band size:** 95 kDa

7% SDS gel.

**Please note:** All products are "FOR RESEARCH USE ONLY. NOT FOR USE IN DIAGNOSTIC PROCEDURES"

### Our Abpromise to you: Quality guaranteed and expert technical support

- Replacement or refund for products not performing as stated on the datasheet
- Valid for 12 months from date of delivery
- Response to your inquiry within 24 hours
- We provide support in Chinese, English, French, German, Japanese and Spanish
- Extensive multi-media technical resources to help you
- We investigate all quality concerns to ensure our products perform to the highest standards

If the product does not perform as described on this datasheet, we will offer a refund or replacement. For full details of the Abpromise, please visit <https://www.abcam.com/abpromise> or contact our technical team.

### Terms and conditions

- Guarantee only valid for products bought direct from Abcam or one of our authorized distributors