

Product datasheet

HRP Anti-Dux4 antibody [E5-5] ab208840

Recombinant **RabMAb**

[2 Images](#)

Overview

Product name	HRP Anti-Dux4 antibody [E5-5]
Description	HRP Rabbit monoclonal [E5-5] to Dux4
Host species	Rabbit
Conjugation	HRP
Tested applications	Suitable for: WB
Species reactivity	Reacts with: Human
Immunogen	Synthetic peptide. This information is proprietary to Abcam and/or its suppliers.
Positive control	WB: HT-1080 Whole Cell lysate
General notes	<p>This product is a recombinant monoclonal antibody, which offers several advantages including:</p> <ul style="list-style-type: none"> - High batch-to-batch consistency and reproducibility - Improved sensitivity and specificity - Long-term security of supply - Animal-free production <p>For more information see here.</p> <p>Our RabMAb[®] technology is a patented hybridoma-based technology for making rabbit monoclonal antibodies. For details on our patents, please refer to RabMAb[®] patents.</p>

Properties

Form	Liquid
Storage instructions	Shipped at 4°C. Store at +4°C short term (1-2 weeks). Upon delivery aliquot. Store at -20°C. Avoid freeze / thaw cycle. Store In the Dark.
Storage buffer	<p>pH: 7.40</p> <p>Preservative: 0.1% Proclin 300 Solution</p> <p>Constituents: 30% Glycerol (glycerin, glycerine), 1% BSA, PBS</p>
Purity	Protein A purified
Clonality	Monoclonal
Clone number	E5-5
Isotype	IgG

Applications

The Abpromise guarantee

Our **Abpromise guarantee** covers the use of ab208840 in the following tested applications.

The application notes include recommended starting dilutions; optimal dilutions/concentrations should be determined by the end user.

Application	Abreviews	Notes
WB		1/5000. Detects a band of approximately 45 kDa (predicted molecular weight: 45 kDa).

Target

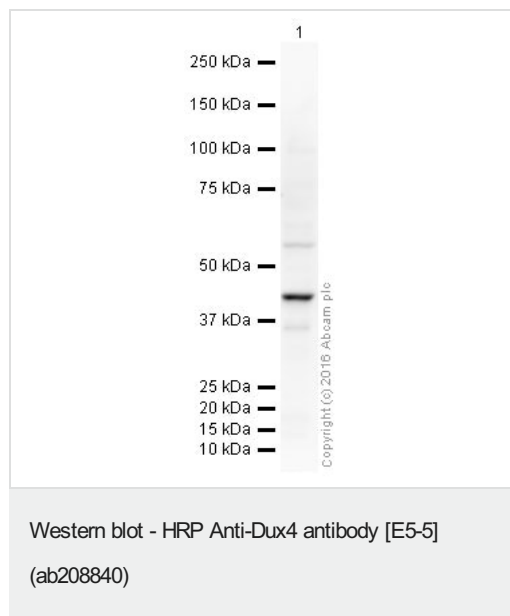
Relevance

DUX4 is a homeodomain protein with a similar protein sequence to Pax3 and Pax7. Defects in DUX4 may be the cause of facioscapulohumeral muscular dystrophy (FSHD). FSHD is characterized by weakness of the muscles of the face, upper-arm and shoulder girdle. Severity is highly variable. Weakness is slowly progressive and about 20% of affected individuals eventually require a wheelchair. Approximately 70-90% of individuals have inherited the disease-causing deletion from a parent, and approximately 10-30% of affected individuals have FSHD as the result of a de novo deletion. Offsprings of an affected individual have a 50% chance of inheriting the deletion.

Cellular localization

Nuclear

Images



HRP Anti-Dux4 antibody [E5-5] (ab208840) at 1/5000 dilution + HT-1080 Whole Cell lysate at 10 µg

Predicted band size: 45 kDa

Blocking buffer: 2% BSA

Gel type: MOPS

Observed band size: 45 kDa

Exposure Time: 16 minutes

Why choose a recombinant antibody?



Research with confidence
Consistent and reproducible results



Long-term and scalable supply
Recombinant technology



Success from the first experiment
Confirmed specificity



Ethical standards compliant
Animal-free production

HRP Anti-Dux4 antibody [E5-5] (ab208840)

Please note: All products are "FOR RESEARCH USE ONLY. NOT FOR USE IN DIAGNOSTIC PROCEDURES"

Our Abpromise to you: Quality guaranteed and expert technical support

- Replacement or refund for products not performing as stated on the datasheet
- Valid for 12 months from date of delivery
- Response to your inquiry within 24 hours
- We provide support in Chinese, English, French, German, Japanese and Spanish
- Extensive multi-media technical resources to help you
- We investigate all quality concerns to ensure our products perform to the highest standards

If the product does not perform as described on this datasheet, we will offer a refund or replacement. For full details of the Abpromise, please visit <https://www.abcam.com/abpromise> or contact our technical team.

Terms and conditions

- Guarantee only valid for products bought direct from Abcam or one of our authorized distributors