


Product datasheet

HRP Anti-ERG antibody [EPR3864] ab195514

Recombinant RabMAb

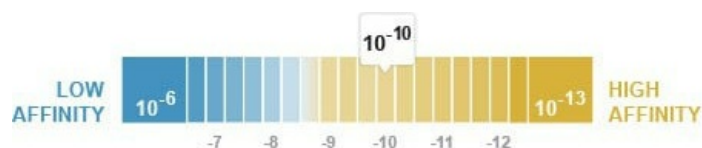
[1 References](#) [2 Images](#)

Overview

Product name	HRP Anti-ERG antibody [EPR3864]
Description	HRP Rabbit monoclonal [EPR3864] to ERG
Host species	Rabbit
Conjugation	HRP
Tested applications	Suitable for: WB
Species reactivity	Reacts with: Human Predicted to work with: Mouse, Rat 
Immunogen	Synthetic peptide. This information is proprietary to Abcam and/or its suppliers.
Positive control	WB: Jurkat whole cell lysate.
General notes	<p>This product is a recombinant monoclonal antibody, which offers several advantages including:</p> <ul style="list-style-type: none"> - High batch-to-batch consistency and reproducibility - Improved sensitivity and specificity - Long-term security of supply - Animal-free production <p>For more information see here.</p> <p>Our RabMAb[®] technology is a patented hybridoma-based technology for making rabbit monoclonal antibodies. For details on our patents, please refer to RabMAb[®] patents.</p>

Properties

Form	Liquid
Storage instructions	Shipped at 4°C. Store at +4°C short term (1-2 weeks). Upon delivery aliquot. Store at -20°C. Avoid freeze / thaw cycle. Store In the Dark.
Dissociation constant (K_D)	K _D = 8.90 x 10 ⁻¹⁰ M



[Learn more about K_D](#)

Storage buffer	pH: 7.40 Preservative: 0.1% Proclin 300 Solution Constituents: PBS, 1% BSA, 30% Glycerol (glycerin, glycerine)
Purity	Protein A purified
Clonality	Monoclonal
Clone number	EPR3864
Isotype	IgG

Applications

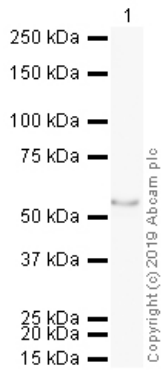
The Abpromise guarantee Our **Abpromise guarantee** covers the use of ab195514 in the following tested applications. The application notes include recommended starting dilutions; optimal dilutions/concentrations should be determined by the end user.

Application	Abreviews	Notes
WB		1/2000. Detects a band of approximately 55 kDa (predicted molecular weight: 55 kDa).

Target

Function	Transcriptional regulator. May participate in transcriptional regulation through the recruitment of SETDB1 histone methyltransferase and subsequent modification of local chromatin structure.
Involvement in disease	Defects in ERG are a cause of Ewing sarcoma (ES) [MIM:612219]. A highly malignant, metastatic, primitive small round cell tumor of bone and soft tissue that affects children and adolescents. It belongs to the Ewing sarcoma family of tumors, a group of morphologically heterogeneous neoplasms that share the same cytogenetic features. They are considered neural tumors derived from cells of the neural crest. Ewing sarcoma represents the less differentiated form of the tumors. Note=A chromosomal aberration involving ERG is found in patients with Erwing sarcoma. Translocation t(21;22)(q22;q12) with EWSR1. Note=Chromosomal aberrations involving ERG have been found in acute myeloid leukemia (AML). Translocation t(16;21)(p11;q22) with FUS. Translocation t(X;21)(q25-26;q22) with ELF4.
Sequence similarities	Belongs to the ETS family. Contains 1 ETS DNA-binding domain. Contains 1 PNT (pointed) domain.
Cellular localization	Nucleus. Cytoplasm. Localized in cytoplasmic mRNP granules containing untranslated mRNAs.

Images



Western blot - HRP Anti-ERG antibody [EPR3864]
(ab195514)

HRP Anti-ERG antibody [EPR3864] (ab195514) at 1/1000 dilution
+ Jurkat (Human T cell lymphoblast-like cell line) Whole Cell Lysate
at 20 µg

Developed using the ECL technique.





Performed under reducing conditions.

Predicted band size: 55 kDa

Exposure time: 20 minutes

This blot was produced using a 4-12% Bis-tris gel under the MOPS buffer system. The gel was run at 200V for 50 minutes before being transferred onto a Nitrocellulose membrane at 30V for 70 minutes. The membrane was then blocked for an hour using 3% milk before being incubated with ab195514 overnight at 4°C. Antibody binding was visualised using ECL development solution [ab133406](#).

Why choose a recombinant antibody?

 Research with confidence Consistent and reproducible results	 Long-term and scalable supply Recombinant technology
 Success from the first experiment Confirmed specificity	 Ethical standards compliant Animal-free production

HRP Anti-ERG antibody [EPR3864] (ab195514)

Please note: All products are "FOR RESEARCH USE ONLY. NOT FOR USE IN DIAGNOSTIC PROCEDURES"

Our Abpromise to you: Quality guaranteed and expert technical support

- Replacement or refund for products not performing as stated on the datasheet
- Valid for 12 months from date of delivery
- Response to your inquiry within 24 hours

- We provide support in Chinese, English, French, German, Japanese and Spanish
- Extensive multi-media technical resources to help you
- We investigate all quality concerns to ensure our products perform to the highest standards

If the product does not perform as described on this datasheet, we will offer a refund or replacement. For full details of the Abpromise, please visit <https://www.abcam.com/abpromise> or contact our technical team.

Terms and conditions

- Guarantee only valid for products bought direct from Abcam or one of our authorized distributors