

Product datasheet

HRP Anti-IL-11 antibody [KT62] ab106492

1 Image

Overview

Product name	HRP Anti-IL-11 antibody [KT62]
Description	HRP Mouse monoclonal [KT62] to IL-11
Host species	Mouse
Conjugation	HRP
Specificity	ab106492 is specific for Human Interleukin 11
Tested applications	Suitable for: Sandwich ELISA
Species reactivity	Reacts with: Human
Immunogen	Recombinant full length protein corresponding to Human IL-11. Sequence: MNCVCRLVLV VLSLWPD TAV APGPPPGPPR VSPDPRAELD STVLLTRSL ADTRQLAAQL RDKFPADGDH NLDSLPTLAM SAGALGALQL PGVLTRLRAD LLSYLRHVQW LRRAGGSSLK TLEPELGT LQ ARLDRLLRRL QLLMSRLALP QPPPDPPAPP LAPPSSAWGG IRAAHAI

 [Run BLAST with](#)

 [Run BLAST with](#)

General notes

The Life Science industry has been in the grips of a reproducibility crisis for a number of years. Abcam is leading the way in addressing this with our range of recombinant monoclonal antibodies and knockout edited cell lines for gold-standard validation. Please check that this product meets your needs before purchasing.

If you have any questions, special requirements or concerns, please send us an inquiry and/or contact our Support team ahead of purchase. Recommended alternatives for this product can be found below, along with publications, customer reviews and Q&As

Properties

Form	Liquid
Storage instructions	Shipped at 4°C. Store at +4°C.
Storage buffer	Preservative: 0.01% Thimerosal (merthiolate) Constituent: PBS
Purity	Protein A purified

Clonality	Monoclonal
Clone number	KT62
Isotype	IgG1

Applications

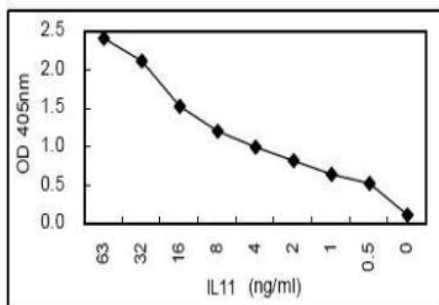
The Abpromise guarantee Our **Abpromise guarantee** covers the use of ab106492 in the following tested applications. The application notes include recommended starting dilutions; optimal dilutions/concentrations should be determined by the end user.

Application	Abreviews	Notes
Sandwich ELISA		1/1000.

Target

Function	Directly stimulates the proliferation of hematopoietic stem cells and megakaryocyte progenitor cells and induces megakaryocyte maturation resulting in increased platelet production.
Sequence similarities	Belongs to the IL-6 superfamily.
Cellular localization	Secreted.

Images



Sandwich ELISA - HRP Anti-IL-11 antibody [KT62]
(ab106492)

ab106492 at 1/1000 dilution detecting IL-11 by sandwich ELISA.
The capture antibody is an mouse monoclonal (IgG1) raised against Human IL-11.

Please note: All products are "FOR RESEARCH USE ONLY. NOT FOR USE IN DIAGNOSTIC PROCEDURES"

Our Abpromise to you: Quality guaranteed and expert technical support

- Replacement or refund for products not performing as stated on the datasheet
- Valid for 12 months from date of delivery
- Response to your inquiry within 24 hours
- We provide support in Chinese, English, French, German, Japanese and Spanish

- Extensive multi-media technical resources to help you
- We investigate all quality concerns to ensure our products perform to the highest standards

If the product does not perform as described on this datasheet, we will offer a refund or replacement. For full details of the Abpromise, please visit <https://www.abcam.com/abpromise> or contact our technical team.

Terms and conditions

- Guarantee only valid for products bought direct from Abcam or one of our authorized distributors