

HRP Anti-Kappa light chain antibody [KT102] ab170326

[2 Images](#)

Overview

Product name	HRP Anti-Kappa light chain antibody [KT102]
Description	HRP Mouse monoclonal [KT102] to Kappa light chain
Host species	Mouse
Conjugation	HRP
Tested applications	Suitable for: WB, ELISA
Species reactivity	Reacts with: Rat Does not react with: Mouse, Rabbit, Goat, Human
Immunogen	Synthetic peptide corresponding to Rat Kappa light chain.
Positive control	Rat Ig Kappa light chain
General notes	ab170326 can be used for rat IgG isotyping.

The Life Science industry has been in the grips of a reproducibility crisis for a number of years. Abcam is leading the way in addressing this with our range of recombinant monoclonal antibodies and knockout edited cell lines for gold-standard validation. Please check that this product meets your needs before purchasing.

If you have any questions, special requirements or concerns, please send us an inquiry and/or contact our Support team ahead of purchase. Recommended alternatives for this product can be found below, along with publications, customer reviews and Q&As

Properties

Form	Liquid
Storage instructions	Shipped at 4°C. Store at +4°C short term (1-2 weeks). Upon delivery aliquot. Store at -20°C or -80°C. Avoid freeze / thaw cycle.
Storage buffer	Preservative: 0.01% Thimerosal (merthiolate) Constituent: 99% PBS
Purity	Protein A purified
Purification notes	ab170326 is purified through a Protein A column and labeled with horseradish peroxidase.
Clonality	Monoclonal
Clone number	KT102
Isotype	IgG1

Applications

The Abpromise guarantee Our **Abpromise guarantee** covers the use of ab170326 in the following tested applications.

The application notes include recommended starting dilutions; optimal dilutions/concentrations should be determined by the end user.

Application	Abreviews	Notes
WB		1/1000. This dilution works using DAB as substrate. More dilution is needed for ECL system.
ELISA		1/2000.

Target

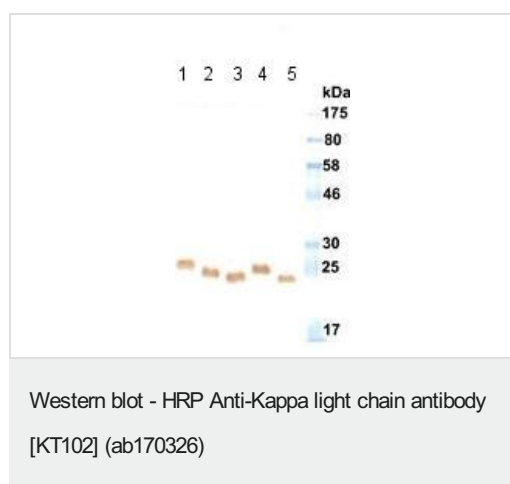
Relevance

Immunoglobulins belong to a group of related glyco proteins which make up 20% of serum proteins. Antigens and immunoglobulins react to confer immunity to individuals. Immunoglobulins have similar structures of two identical heavy chains and two identical light chains. Both the heavy chains and the light chains are divided into constant and variable regions. The constant regions have the same amino acid sequences between all the immunoglobulin classes. The variable regions have approximately 110 amino acids with high sequence variability. The amino acid sequence of the heavy chain determines the class of an immunoglobulin. The five types of immunoglobulin heavy chains are known as: IgG, IgA, IgM, IgD, and IgE. IgG is divided into four subclasses, and IgA is divided into two subclasses. In serum IgA and IgG are monomers with a single 4 polypeptide unit; while, IgM is a pentamer. IgA may also form polymers. Kappa light chain antibody can be used for the identification of leukemias, plasmacytomas and certain non Hodgkin's lymphomas. Kappa light chain contains one immunoglobulin like domain. The EU sequence has the INV allotypic marker, Ala 45 and Val 83. The ROY sequence has the INV allotypic marker, Ala 45 and Leu 83.

Cellular localization

Cytoplasmic and Secreted

Images



All lanes : HRP Anti-Kappa light chain antibody [KT102]
(ab170326) at 1/1000 dilution

Lane 1 : rat IgM

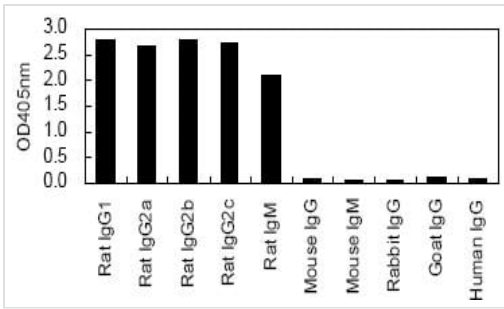
Lane 2 : rat IgG2c

Lane 3 : rat IgG2b

Lane 4 : rat IgG2a

Lane 5 : rat IgG1

Performed under reducing conditions.



ELISA for crossreactivity to various immunoglobulins.

ELISA - HRP Anti-Kappa light chain antibody
[KT102] (ab170326)

Please note: All products are "FOR RESEARCH USE ONLY. NOT FOR USE IN DIAGNOSTIC PROCEDURES"

Our Abpromise to you: Quality guaranteed and expert technical support

- Replacement or refund for products not performing as stated on the datasheet
- Valid for 12 months from date of delivery
- Response to your inquiry within 24 hours
- We provide support in Chinese, English, French, German, Japanese and Spanish
- Extensive multi-media technical resources to help you
- We investigate all quality concerns to ensure our products perform to the highest standards

If the product does not perform as described on this datasheet, we will offer a refund or replacement. For full details of the Abpromise, please visit <https://www.abcam.com/abpromise> or contact our technical team.

Terms and conditions

- Guarantee only valid for products bought direct from Abcam or one of our authorized distributors