

Product datasheet

HRP Anti-MLKL (phospho S345) antibody [EPR9515(2)] ab208430

Recombinant RabMAb

[3 Images](#)

Overview

Product name	HRP Anti-MLKL (phospho S345) antibody [EPR9515(2)]
Description	HRP Rabbit monoclonal [EPR9515(2)] to MLKL (phospho S345)
Host species	Rabbit
Conjugation	HRP
Specificity	MLKL pS345 is a trigger for necroptosis. It is only detectable in infection/cellular damaged (PMID:29229989) or aging tissue (PMID: 28807105) but not in normal tissues.
Tested applications	Suitable for: Dot blot, WB
Species reactivity	Reacts with: Mouse
Immunogen	Synthetic peptide. This information is proprietary to Abcam and/or its suppliers.
Positive control	L-929 cells.
General notes	<p>This antibody was developed through collaboration with the lab of Xiaodong Wang at the National Institute of Biological Sciences, Beijing.</p> <p>This product is a recombinant monoclonal antibody, which offers several advantages including:</p> <ul style="list-style-type: none">- High batch-to-batch consistency and reproducibility- Improved sensitivity and specificity- Long-term security of supply- Animal-free production <p>For more information see here.</p> <p>Our RabMAb[®] technology is a patented hybridoma-based technology for making rabbit monoclonal antibodies. For details on our patents, please refer to RabMAb[®] patents.</p>

Properties

Form	Liquid
Storage instructions	Shipped at 4°C. Store at +4°C short term (1-2 weeks). Upon delivery aliquot. Store at -20°C. Avoid freeze / thaw cycle. Store In the Dark.
Storage buffer	pH: 7.40 Preservative: 0.1% Proclin 300 Solution

	Constituents: PBS, 1% BSA, 30% Glycerol (glycerin, glycerine)
Purity	Protein A purified
Clonality	Monoclonal
Clone number	EPR9515(2)
Isotype	IgG

Applications

The Abpromise guarantee Our **Abpromise guarantee** covers the use of ab208430 in the following tested applications. The application notes include recommended starting dilutions; optimal dilutions/concentrations should be determined by the end user.

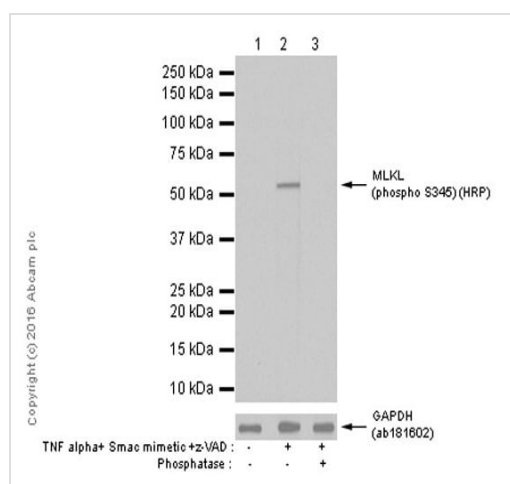
Application	Abreviews	Notes
Dot blot		1/1000.
WB		1/4500. Predicted molecular weight: 54 kDa.

Target

Sequence similarities Belongs to the protein kinase superfamily. Contains 1 protein kinase domain.

Domain The protein kinase domain is predicted to be catalytically inactive.

Images



Western blot - HRP Anti-MLKL (phospho S345) antibody [EPR9515(2)] (ab208430)

All lanes : HRP Anti-MLKL (phospho S345) antibody [EPR9515(2)] (ab208430) at 1/4500 dilution

Lane 1 : Untreated L-929 (Mouse connective tissue fibroblast cell line) whole cell lysates

Lane 2 : L-929 (Mouse connective tissue fibroblast cell line) treated with 20 ng/ml TNF alpha, 100nM Smac mimetic , and 20mM z-VAD for 8 hours whole cell lysates

Lane 3 : L-929 (Mouse connective tissue fibroblast cell line) treated with 20 ng/ml TNF alpha, 100nM Smac mimetic , and 20mM z-VAD for 8 hours whole cell lysates. Then the membrane was incubated with Alkaline phosphatase.

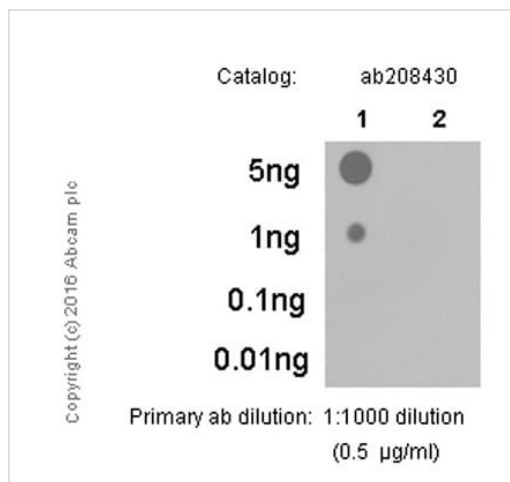
Lysates/proteins at 15 µg per lane.

Predicted band size: 54 kDa

Observed band size: 54 kDa

Exposure time: 1 minute

Blocking and diluting buffer: 5% NFD/MTBST.



Dot Blot - HRP Anti-MLKL (phospho S345) antibody
[EPR9515(2)] (ab208430)

Dot Blot analysis of

Lane 1: MLKL (phospho S345) phospho peptide and

Lane 2: MLKL Non-phospho peptide labeling MLKL (phospho S345)

with ab208430 at 1/1000 dilution. 5% NFD/MTBST was used as the diluting and blocking buffer. Exposure time: 3 minutes.

Why choose a recombinant antibody?

- Research with confidence**
Consistent and reproducible results
- Long-term and scalable supply**
Recombinant technology
- Success from the first experiment**
Confirmed specificity
- Ethical standards compliant**
Animal-free production

HRP Anti-MLKL (phospho S345) antibody
[EPR9515(2)] (ab208430)

Please note: All products are "FOR RESEARCH USE ONLY. NOT FOR USE IN DIAGNOSTIC PROCEDURES"

Our Abpromise to you: Quality guaranteed and expert technical support

- Replacement or refund for products not performing as stated on the datasheet
- Valid for 12 months from date of delivery
- Response to your inquiry within 24 hours

- We provide support in Chinese, English, French, German, Japanese and Spanish
- Extensive multi-media technical resources to help you
- We investigate all quality concerns to ensure our products perform to the highest standards

If the product does not perform as described on this datasheet, we will offer a refund or replacement. For full details of the Abpromise, please visit <https://www.abcam.com/abpromise> or contact our technical team.

Terms and conditions

- Guarantee only valid for products bought direct from Abcam or one of our authorized distributors