

## Product datasheet

### HRP Anti-PD-L1 antibody [28-8] ab209961

Recombinant **RabMAb**

[2 Images](#)

#### Overview

<b>Product name</b>	HRP Anti-PD-L1 antibody [28-8]
<b>Description</b>	HRP Rabbit monoclonal [28-8] to PD-L1
<b>Host species</b>	Rabbit
<b>Conjugation</b>	HRP
<b>Tested applications</b>	<b>Suitable for:</b> WB
<b>Species reactivity</b>	<b>Reacts with:</b> Human
<b>Immunogen</b>	Fusion protein. This information is proprietary to Abcam and/or its suppliers.
<b>Positive control</b>	WB: CHO-PD-L1 whole cell lysate.
<b>General notes</b>	<p>Anti-PD-L1 antibody [28-8] has been used as detector antibody in <b>Human PD-L1 SimpleStep ELISA® kit (ab214565)</b>.</p> <p>Our RabMAb® technology is a patented hybridoma-based technology for making rabbit monoclonal antibodies. For details on our patents, please refer to <a href="#">RabMAb® patents</a>.</p>

#### Properties

<b>Form</b>	Liquid
<b>Storage instructions</b>	Shipped at 4°C. Store at +4°C short term (1-2 weeks). Upon delivery aliquot. Store at -20°C. Avoid freeze / thaw cycle. Store In the Dark.
<b>Storage buffer</b>	<p>pH: 7.40</p> <p>Preservative: 0.1% Proclin 300 Solution</p> <p>Constituents: 1% BSA, 30% Glycerol (glycerin, glycerine), PBS</p>
<b>Purity</b>	Protein A purified
<b>Clonality</b>	Monoclonal
<b>Clone number</b>	28-8
<b>Isotype</b>	IgG

#### Applications

## The Abpromise guarantee

Our **Abpromise guarantee** covers the use of ab209961 in the following tested applications.

The application notes include recommended starting dilutions; optimal dilutions/concentrations should be determined by the end user.

Application	Abreviews	Notes
WB		1/1000. Predicted molecular weight: 33 kDa.

## Target

### Function

Involved in the costimulatory signal, essential for T-cell proliferation and production of IL10 and IFNG, in an IL2-dependent and a PDCD1-independent manner. Interaction with PDCD1 inhibits T-cell proliferation and cytokine production.

### Tissue specificity

Highly expressed in the heart, skeletal muscle, placenta and lung. Weakly expressed in the thymus, spleen, kidney and liver. Expressed on activated T- and B-cells, dendritic cells, keratinocytes and monocytes.

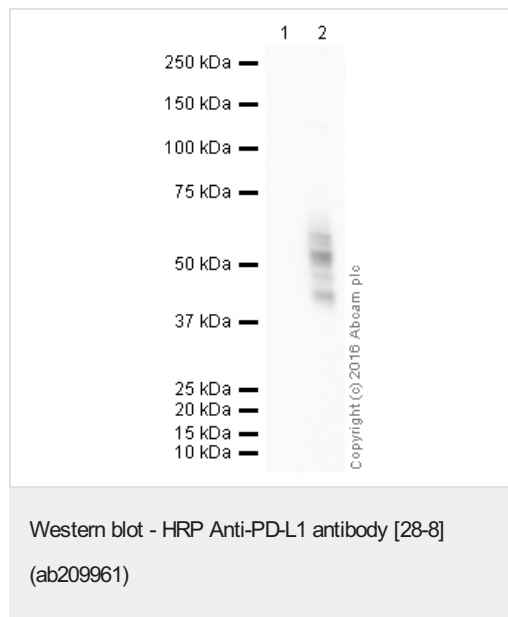
### Sequence similarities

Belongs to the immunoglobulin superfamily. BTN/MOG family.  
Contains 1 Ig-like C2-type (immunoglobulin-like) domain.  
Contains 1 Ig-like V-type (immunoglobulin-like) domain.

### Cellular localization

Cell membrane and Endomembrane system.

## Images



**All lanes :** HRP Anti-PD-L1 antibody [28-8] (ab209961) at 1/1000 dilution

**Lane 1 :** CHO-S

**Lane 2 :** CHO-PD-L1

Lysates/proteins at 10 µg per lane.

Developed using the ECL technique.

Performed under reducing conditions.

**Predicted band size:** 33 kDa





**Observed band size:** 40-60 kDa

**Exposure time:** 20 minutes

This blot was produced using a 4-12% Bis-tris gel under the MOPS buffer system. The gel was run at 200V for 50 minutes before being transferred onto a Nitrocellulose membrane at 30V for 70 minutes.

The membrane was then blocked for an hour using 3% milk before being incubated with ab209961 overnight at 4°C. Antibody binding was visualised using ECL development solution **ab133406**.

Why choose a recombinant antibody?

 <b>Research with confidence</b> Consistent and reproducible results	 <b>Long-term and scalable supply</b> Recombinant technology
 <b>Success from the first experiment</b> Confirmed specificity	 <b>Ethical standards compliant</b> Animal-free production

HRP Anti-PD-L1 antibody [28-8] (ab209961)

**Please note:** All products are "FOR RESEARCH USE ONLY. NOT FOR USE IN DIAGNOSTIC PROCEDURES"

### Our Abpromise to you: Quality guaranteed and expert technical support

---

- Replacement or refund for products not performing as stated on the datasheet
- Valid for 12 months from date of delivery
- Response to your inquiry within 24 hours
- We provide support in Chinese, English, French, German, Japanese and Spanish
- Extensive multi-media technical resources to help you
- We investigate all quality concerns to ensure our products perform to the highest standards

If the product does not perform as described on this datasheet, we will offer a refund or replacement. For full details of the Abpromise, please visit <https://www.abcam.com/abpromise> or contact our technical team.

### Terms and conditions

---

- Guarantee only valid for products bought direct from Abcam or one of our authorized distributors