

Product datasheet

HRP Anti-V5 tag antibody [E10/V4RR] ab173837

[1 Image](#)

Overview

Product name	HRP Anti-V5 tag antibody [E10/V4RR]
Description	HRP Mouse monoclonal [E10/V4RR] to V5 tag
Host species	Mouse
Conjugation	HRP
Specificity	ab173837 shows reactivity with tagged proteins.
Tested applications	Suitable for: WB
Species reactivity	Reacts with: Species independent
Immunogen	Synthetic peptide corresponding to V5 tag conjugated to Keyhole Limpet Haemocyanin (KLH). Sequence: GKPIPPELLGLDST

 [Run BLAST with](#)

 [Run BLAST with](#)

Positive control E. coli lysate containing a V5 multi-epitope tagged protein.

General notes The Life Science industry has been in the grips of a reproducibility crisis for a number of years. Abcam is leading the way in addressing this with our range of recombinant monoclonal antibodies and knockout edited cell lines for gold-standard validation. Please check that this product meets your needs before purchasing.

If you have any questions, special requirements or concerns, please send us an inquiry and/or contact our Support team ahead of purchase. Recommended alternatives for this product can be found below, along with publications, customer reviews and Q&As

Properties

Form	Liquid
Storage instructions	Shipped at 4°C. Store at +4°C.
Clonality	Monoclonal
Clone number	E10/V4RR
Isotype	IgG1

Applications

The Abpromise guarantee

Our **Abpromise guarantee** covers the use of ab173837 in the following tested applications.

The application notes include recommended starting dilutions; optimal dilutions/concentrations should be determined by the end user.

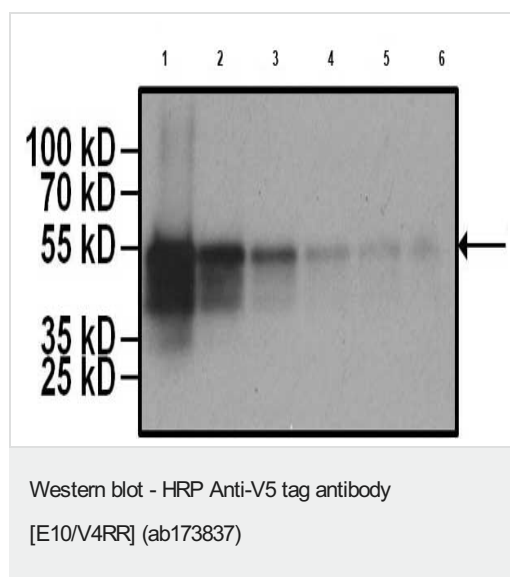
Application	Abreviews	Notes
WB		1/500 - 1/2000.

Target

Relevance

The V5 epitope tag is derived from a small epitope (Pk) present on the P and V proteins of the paramyxovirus of simian virus 5 (SV5). The V5 tag is usually used with all 14 amino acids (GKPIPPELLGLDST), although it has also been used with a shorter 9 amino acid sequence (IPNPELLGLD).

Images



All lanes : HRP Anti-V5 tag antibody [E10/V4RR] (ab173837) at 1/1000 dilution

Lane 1 : E. coli lysate containing a V5 multi-epitope tagged protein at 1 μ g

Lane 2 : E. coli lysate containing a V5 multi-epitope tagged protein at 0.5 μ g

Lane 3 : E. coli lysate containing a V5 multi-epitope tagged protein at 0.25 μ g

Lane 4 : E. coli lysate containing a V5 multi-epitope tagged protein at 0.125 μ g

Lane 5 : E. coli lysate containing a V5 multi-epitope tagged protein at 0.0599999986588955 μ g

Lane 6 : E. coli lysate containing a V5 multi-epitope tagged protein at 0.0299999993294477 μ g

Developed using the ECL technique.

Please note: All products are "FOR RESEARCH USE ONLY. NOT FOR USE IN DIAGNOSTIC PROCEDURES"

Our Abpromise to you: Quality guaranteed and expert technical support

- Replacement or refund for products not performing as stated on the datasheet
- Valid for 12 months from date of delivery
- Response to your inquiry within 24 hours
- We provide support in Chinese, English, French, German, Japanese and Spanish
- Extensive multi-media technical resources to help you

- We investigate all quality concerns to ensure our products perform to the highest standards

If the product does not perform as described on this datasheet, we will offer a refund or replacement. For full details of the Abpromise, please visit <https://www.abcam.com/abpromise> or contact our technical team.

Terms and conditions

- Guarantee only valid for products bought direct from Abcam or one of our authorized distributors