




Product datasheet

Anti-HS1BP3 antibody - C-terminal ab200592

[2 Images](#)

Overview

Product name	Anti-HS1BP3 antibody - C-terminal
Description	Rabbit polyclonal to HS1BP3 - C-terminal
Host species	Rabbit
Tested applications	Suitable for: WB, IP
Species reactivity	Reacts with: Human Predicted to work with: Rabbit, Chimpanzee, Cynomolgus monkey, Rhesus monkey, Orangutan 
Immunogen	Synthetic peptide within Human HS1BP3 aa 300 to the C-terminus (C terminal). The exact immunogen sequence used to generate this antibody is proprietary information. If additional detail on the immunogen is needed to determine the suitability of the antibody for your needs, please contact our Scientific Support team to discuss your requirements. (NP_071905.3). Database link: Q53T59  Run BLAST with  Run BLAST with
Positive control	HeLa, 293T and Jurkat whole cell lysates.
General notes	<p>The Life Science industry has been in the grips of a reproducibility crisis for a number of years. Abcam is leading the way in addressing this with our range of recombinant monoclonal antibodies and knockout edited cell lines for gold-standard validation. Please check that this product meets your needs before purchasing.</p> <p>If you have any questions, special requirements or concerns, please send us an inquiry and/or contact our Support team ahead of purchase. Recommended alternatives for this product can be found below, along with publications, customer reviews and Q&As</p>

Properties

Form	Liquid
Storage instructions	Shipped at 4°C. Store at +4°C short term (1-2 weeks). Upon delivery aliquot. Store at -20°C long term. Avoid freeze / thaw cycle.
Storage buffer	pH: 7 Preservative: 0.09% Sodium azide Constituent: 99% Tris citrate/phosphate pH 7 to 8

Purity	Immunogen affinity purified
Purification notes	ab200592 was affinity purified using an epitope specific to HS1BP3 immobilized on solid support.
Clonality	Polyclonal
Isotype	IgG

Applications

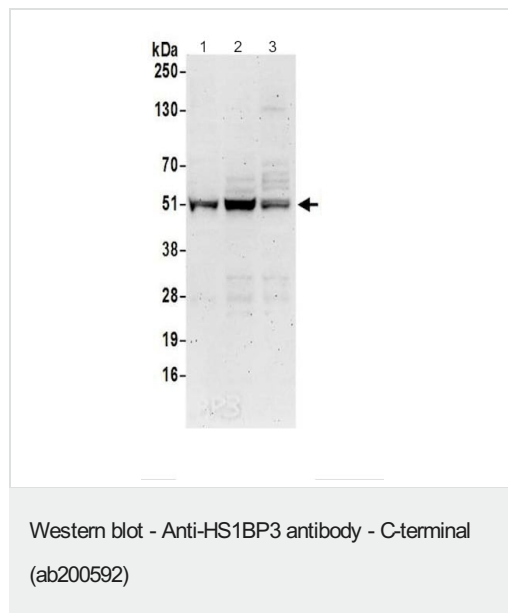
The Abpromise guarantee Our **Abpromise guarantee** covers the use of ab200592 in the following tested applications. The application notes include recommended starting dilutions; optimal dilutions/concentrations should be determined by the end user.

Application	Abreviews	Notes
WB		1/2000 - 1/10000. Predicted molecular weight: 43 kDa.
IP		Use at 2-10 µg/mg of lysate.

Target

Function	Maybe a modulator of IL-2 signaling.
Sequence similarities	Contains 1 PX (phox homology) domain.

Images



All lanes : Anti-HS1BP3 antibody - C-terminal (ab200592) at 0.1 µg/ml

Lane 1 : HeLa whole cell lysate

Lane 2 : 293T whole cell lysate

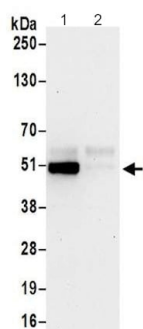
Lane 3 : Jurkat whole cell lysate

Lysates/proteins at 50 µg per lane.

Developed using the ECL technique.

Predicted band size: 43 kDa

Exposure time: 3 minutes



Immunoprecipitation - Anti-HS1BP3 antibody - C-terminal (ab200592)

Detection of HS1BP3 in immunoprecipitates of HeLa whole cell lysate (prepared using NETN lysis buffer; 1 mg for IP, 20% of IP loaded) using ab200592 at 6 $\mu\text{g}/\text{mg}$ lysate for IP and at 0.4 $\mu\text{g}/\text{ml}$ for subsequent Western blot detection (Lane 1). Lane 2 represents control IgG IP.

Detection: Chemiluminescence with an exposure time of 30 seconds.

Please note: All products are "FOR RESEARCH USE ONLY. NOT FOR USE IN DIAGNOSTIC PROCEDURES"

Our Abpromise to you: Quality guaranteed and expert technical support

- Replacement or refund for products not performing as stated on the datasheet
- Valid for 12 months from date of delivery
- Response to your inquiry within 24 hours
- We provide support in Chinese, English, French, German, Japanese and Spanish
- Extensive multi-media technical resources to help you
- We investigate all quality concerns to ensure our products perform to the highest standards

If the product does not perform as described on this datasheet, we will offer a refund or replacement. For full details of the Abpromise, please visit <https://www.abcam.com/abpromise> or contact our technical team.

Terms and conditions

- Guarantee only valid for products bought direct from Abcam or one of our authorized distributors