

Product datasheet

Anti-Hsp40 antibody [2A7.H6] α b74442

[2 References](#) [1 Image](#)

Overview

Product name	Anti-Hsp40 antibody [2A7.H6]
Description	Mouse monoclonal [2A7.H6] to Hsp40
Host species	Mouse
Tested applications	Suitable for: WB
Species reactivity	Reacts with: <i>Saccharomyces cerevisiae</i> Does not react with: Mouse, Rat, Human
Immunogen	Full length protein corresponding to <i>Saccharomyces cerevisiae</i> Hsp40. Database link: P25491
Positive control	WB: Yeast recombinant cell lysate.
General notes	<p>The Life Science industry has been in the grips of a reproducibility crisis for a number of years. Abcam is leading the way in addressing this with our range of recombinant monoclonal antibodies and knockout edited cell lines for gold-standard validation. Please check that this product meets your needs before purchasing.</p> <p>If you have any questions, special requirements or concerns, please send us an inquiry and/or contact our Support team ahead of purchase. Recommended alternatives for this product can be found below, along with publications, customer reviews and Q&As</p>

Properties

Form	Liquid
Storage instructions	Shipped at 4°C. Upon delivery aliquot and store at -20°C. Avoid freeze / thaw cycles.
Storage buffer	Preservative: 0.09% Sodium azide Constituent: 50% Glycerol (glycerin, glycerine)
Purity	Protein G purified
Clonality	Monoclonal
Clone number	2A7.H6
Isotype	IgG1
Light chain type	kappa

Applications

Applications

The Abpromise guarantee

Our **Abpromise guarantee** covers the use of ab74442 in the following tested applications.

The application notes include recommended starting dilutions; optimal dilutions/concentrations should be determined by the end user.

Application	Abreviews	Notes
WB		1/2000. Predicted molecular weight: 40 kDa.

Target

Function

Interacts with HSP70 and can stimulate its ATPase activity. Stimulates the association between HSC70 and HIP.

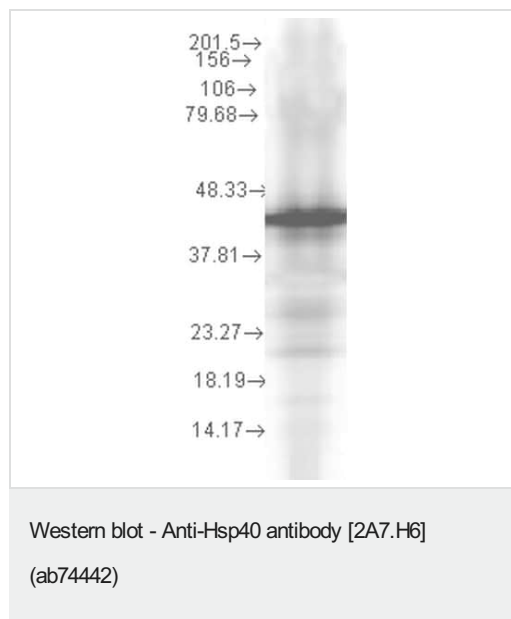
Sequence similarities

Contains 1 J domain.

Cellular localization

Cytoplasm. Nucleus. Nucleus > nucleolus. Translocates rapidly from the cytoplasm to the nucleus, and especially to the nucleoli, upon heat shock.

Images



Anti-Hsp40 antibody [2A7.H6] (ab74442) at 1/1000 dilution +
Saccharomyces cerevisiae recombinant cell lysate at 15 µg

Secondary

Sheep Anti-Mouse IgG: HRP

Predicted band size: 40 kDa

Block: 1.5% BSA for 30 minutes at room temperature.

Please note: All products are "FOR RESEARCH USE ONLY. NOT FOR USE IN DIAGNOSTIC PROCEDURES"

Our Abpromise to you: Quality guaranteed and expert technical support

- Replacement or refund for products not performing as stated on the datasheet
- Valid for 12 months from date of delivery
- Response to your inquiry within 24 hours
- We provide support in Chinese, English, French, German, Japanese and Spanish
- Extensive multi-media technical resources to help you

- We investigate all quality concerns to ensure our products perform to the highest standards

If the product does not perform as described on this datasheet, we will offer a refund or replacement. For full details of the Abpromise, please visit <https://www.abcam.com/abpromise> or contact our technical team.

Terms and conditions

- Guarantee only valid for products bought direct from Abcam or one of our authorized distributors