

Product datasheet

Anti-Hsp60 antibody [EP1006Y] - Loading Control ab45134

Recombinant RabMAb

★★★★★ [1 Abreviews](#) [15 References](#) [8 Images](#)

Overview

Product name	Anti-Hsp60 antibody [EP1006Y] - Loading Control
Description	Rabbit monoclonal [EP1006Y] to Hsp60 - Loading Control
Host species	Rabbit
Tested applications	Suitable for: IHC-P, WB Unsuitable for: Flow Cyt, ICC/IF or IP
Species reactivity	Reacts with: Mouse, Rat, Human
Immunogen	Synthetic peptide corresponding to Human Hsp60 aa 400-500 (internal sequence).
Positive control	T47D cell lysate, human breast carcinoma tissue.
General notes	This product is a recombinant monoclonal antibody, which offers several advantages including: <ul style="list-style-type: none"> - High batch-to-batch consistency and reproducibility - Improved sensitivity and specificity - Long-term security of supply - Animal-free production For more information see here . Our RabMAb [®] technology is a patented hybridoma-based technology for making rabbit monoclonal antibodies. For details on our patents, please refer to RabMAb[®] patents .

Properties

Form	Liquid
Storage instructions	Shipped at 4°C. Upon delivery aliquot and store at -20°C. Avoid freeze / thaw cycles.
Storage buffer	pH: 7.20 Preservative: 0.01% Sodium azide Constituents: 59% PBS, 40% Glycerol (glycerin, glycerine), 0.5% BSA
Purity	Protein A purified
Clonality	Monoclonal
Clone number	EP1006Y
Isotype	IgG

Applications

The Abpromise guarantee

Our **Abpromise guarantee** covers the use of ab45134 in the following tested applications.

The application notes include recommended starting dilutions; optimal dilutions/concentrations should be determined by the end user.

Application	Abreviews	Notes
IHC-P		1/100 - 1/250. Perform heat mediated antigen retrieval before commencing with IHC staining protocol.
WB	★★★★★ (1)	1/1000 - 1/10000. Detects a band of approximately 60 kDa (predicted molecular weight: 60 kDa).

Application notes

Is unsuitable for Flow Cyt, ICC/IF or IP.

Target

Function

Implicated in mitochondrial protein import and macromolecular assembly. May facilitate the correct folding of imported proteins. May also prevent misfolding and promote the refolding and proper assembly of unfolded polypeptides generated under stress conditions in the mitochondrial matrix.

Involvement in disease

Defects in HSPD1 are a cause of spastic paraplegia autosomal dominant type 13 (SPG13) [MIM:605280]. Spastic paraplegia is a degenerative spinal cord disorder characterized by a slow, gradual, progressive weakness and spasticity of the lower limbs.

Defects in HSPD1 are the cause of leukodystrophy hypomyelinating type 4 (HLD4) [MIM:612233]; also called mitochondrial HSP60 chaperonopathy or MitCHAP-60 disease. HLD4 is a severe autosomal recessive hypomyelinating leukodystrophy. Clinically characterized by infantile-onset rotary nystagmus, progressive spastic paraplegia, neurologic regression, motor impairment, profound mental retardation. Death usually occurs within the first two decades of life.

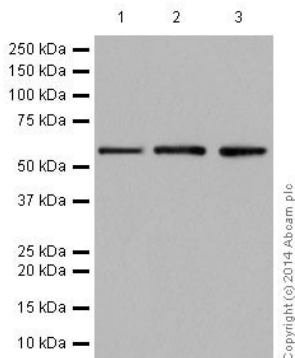
Sequence similarities

Belongs to the chaperonin (HSP60) family.

Cellular localization

Mitochondrion matrix.

Images



Western blot - Anti-Hsp60 antibody [EP1006Y] - Loading Control (ab45134)

All lanes : Anti-Hsp60 antibody [EP1006Y] - Loading Control (ab45134) at 1/20000 dilution

Lane 1 : T47-D (Human mammary gland ductal carcinoma) whole cell lysates

Lane 2 : HeLa (Human cervix adenocarcinoma) whole cell lysates

Lane 3 : 293T (Human embryonic kidney) whole cell lysates

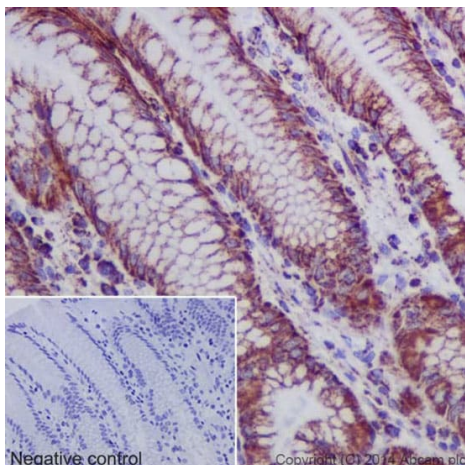
Lysates/proteins at 20 µg per lane.

Secondary

All lanes : Goat Anti-Rabbit IgG, (H+L), Peroxidase conjugated at 1/1000 dilution

Predicted band size: 60 kDa

Blocking/dilution buffer: 5% NFDM /TBST

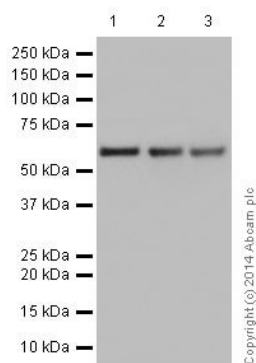


Immunohistochemistry (Formalin/PFA-fixed paraffin-embedded sections) - Anti-Hsp60 antibody [EP1006Y] - Loading Control (ab45134)

Immunohistochemistry analysis of paraffin-embedded Human stomach labeling Hsp60 with ab45134 at a 1/200 dilution. Cytoplasmic staining on the glandular epithelium of the Human stomach shown. Secondary antibody **ab97051** Goat Anti-Rabbit IgG H&L (HRP) used at a 1/500 dilution. Counter stained with Hematoxylin.

Inset image: negative control obtained using PBS instead of ab45134, secondary antibody is Anti-Rabbit HRP (**ab97051**) at 1/500 dilution

Perform heat mediated antigen retrieval before commencing with IHC staining protocol.



Western blot - Anti-Hsp60 antibody [EP1006Y] -
Loading Control (ab45134)

All lanes : Anti-Hsp60 antibody [EP1006Y] - Loading Control
(ab45134) at 1/50000 dilution

Lane 1 : Human fetal brain lysates

Lane 2 : Human fetal heart lysates

Lane 3 : Human fetal kidney lysates

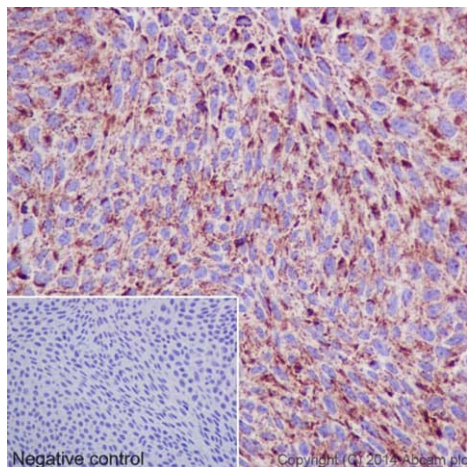
Lysates/proteins at 10 µg per lane.

Secondary

All lanes : Anti-Rabbit IgG (HRP), specific to the non-reduced form
of IgG at 1/1000 dilution

Predicted band size: 60 kDa

Blocking/dilution buffer: 5% NFDM /TBST

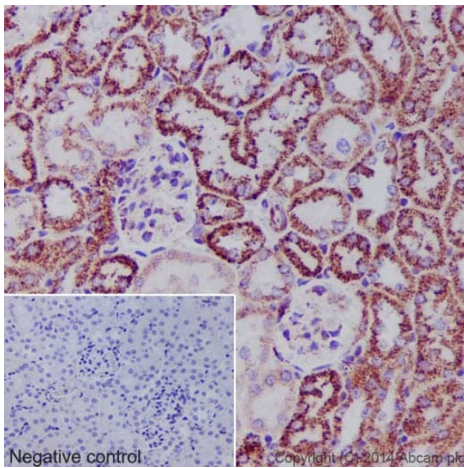


Immunohistochemistry (Formalin/PFA-fixed paraffin-
embedded sections) - Anti-Hsp60 antibody
[EP1006Y] - Loading Control (ab45134)

Immunohistochemistry analysis of paraffin-embedded Human
transitional carcinoma of bladder labeling Hsp60 with ab45134 at a
1/200 dilution. Cytoplasmic staining on tumor cells of the Human
bladder transitional cell carcinoma shown. Secondary antibody
ab97051 Goat Anti-Rabbit IgG H&L (HRP) used at a 1/500 dilution.
Counter stained with Hematoxylin.

Inset image: negative control obtained using PBS instead of
ab45134, secondary antibody is Anti-Rabbit HRP (**ab97051**) at
1/500 dilution

Perform heat mediated antigen retrieval before commencing with
IHC staining protocol.

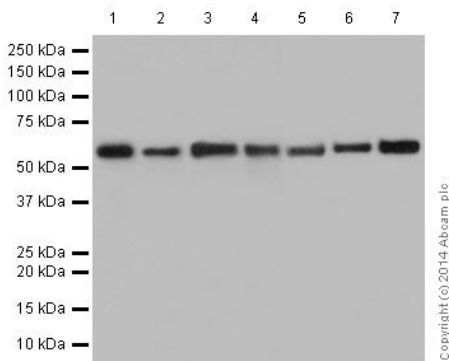


Immunohistochemistry (Formalin/PFA-fixed paraffin-embedded sections) - Anti-Hsp60 antibody [EP1006Y] - Loading Control (ab45134)

Immunohistochemistry analysis of paraffin-embedded Mouse kidney labeling Hsp60 with ab45134 at a 1/200 dilution. Cytoplasmic staining on the epithelium of Mouse kidney tubules shown. Secondary antibody **ab97051** Goat Anti-Rabbit IgG H&L (HRP) used at a 1/500 dilution. Counter stained with Hematoxylin.

Inset image: negative control obtained using PBS instead of ab45134, secondary antibody is Anti-Rabbit HRP (**ab97051**) at 1/500 dilution

Perform heat mediated antigen retrieval before commencing with IHC staining protocol.



Western blot - Anti-Hsp60 antibody [EP1006Y] - Loading Control (ab45134)

All lanes : Anti-Hsp60 antibody [EP1006Y] - Loading Control (ab45134) at 1/50000 dilution

Lane 1 : Mouse brain lysates

Lane 2 : Mouse heart lysates

Lane 3 : Rat brain lysates

Lane 4 : Rat heart lysates

Lane 5 : Raw264.7 (Mouse abelson murine leukemia virus-induced tumor) whole cell lysates

Lane 6 : PC-12 (Rat adrenal gland pheochromocytoma) whole cell lysates

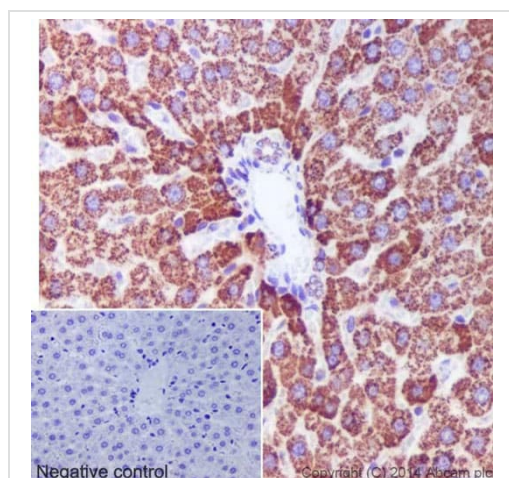
Lane 7 : NIH/3T3 (Mouse embryo) whole cell lysates

Lysates/proteins at 10 µg per lane.

Secondary

All lanes : Goat Anti-Rabbit IgG, (H+L), Peroxidase conjugated at 1/1000 dilution

Predicted band size: 60 kDa



Immunohistochemistry analysis of paraffin-embedded Rat liver labeling Hsp60 with ab45134 at a 1/200 dilution. Cytoplasmic staining on the hepatocytes of the Rat liver shown. Secondary antibody **ab97051** Goat Anti-Rabbit IgG H&L (HRP) used at a 1/500 dilution. Counter stained with Hematoxylin.

Inset image: negative control obtained using PBS instead of ab45134, secondary antibody is Anti-Rabbit HRP (**ab97051**) at 1/500 dilution

Perform heat mediated antigen retrieval before commencing with IHC staining protocol.

Immunohistochemistry (Formalin/PFA-fixed paraffin-embedded sections) - Anti-Hsp60 antibody [EP1006Y] - Loading Control (ab45134)

Why choose a recombinant antibody?

Research with confidence
Consistent and reproducible results

Long-term and scalable supply
Recombinant technology

Success from the first experiment
Confirmed specificity

Ethical standards compliant
Animal-free production

Anti-Hsp60 antibody [EP1006Y] - Loading Control (ab45134)

Please note: All products are "FOR RESEARCH USE ONLY. NOT FOR USE IN DIAGNOSTIC PROCEDURES"

Our Abpromise to you: Quality guaranteed and expert technical support

- Replacement or refund for products not performing as stated on the datasheet
- Valid for 12 months from date of delivery
- Response to your inquiry within 24 hours

- We provide support in Chinese, English, French, German, Japanese and Spanish
- Extensive multi-media technical resources to help you
- We investigate all quality concerns to ensure our products perform to the highest standards

If the product does not perform as described on this datasheet, we will offer a refund or replacement. For full details of the Abpromise, please visit <https://www.abcam.com/abpromise> or contact our technical team.

Terms and conditions

- Guarantee only valid for products bought direct from Abcam or one of our authorized distributors