

Product datasheet

Anti-Hsp70 antibody ab69413

[1 Image](#)

Overview

Product name	Anti-Hsp70 antibody
Description	Rabbit polyclonal to Hsp70
Host species	Rabbit
Tested applications	Suitable for: WB
Species reactivity	Reacts with: Rat, Cow, Human, African green monkey, Chinese hamster
Immunogen	Synthetic peptide. This information is proprietary to Abcam and/or its suppliers.
General notes	<p>The Life Science industry has been in the grips of a reproducibility crisis for a number of years. Abcam is leading the way in addressing this with our range of recombinant monoclonal antibodies and knockout edited cell lines for gold-standard validation. Please check that this product meets your needs before purchasing.</p> <p>If you have any questions, special requirements or concerns, please send us an inquiry and/or contact our Support team ahead of purchase. Recommended alternatives for this product can be found below, along with publications, customer reviews and Q&As</p>

Properties

Form	Liquid
Storage instructions	Shipped at 4°C. Upon delivery aliquot and store at -20°C. Avoid freeze / thaw cycles.
Storage buffer	Preservative: 0.09% Sodium azide Constituents: 50% Glycerol (glycerin, glycerine), PBS
Purity	Protein A purified
Clonality	Polyclonal
Isotype	IgG

Applications

The Abpromise guarantee Our **Abpromise guarantee** covers the use of ab69413 in the following tested applications. The application notes include recommended starting dilutions; optimal dilutions/concentrations should be determined by the end user.

Application	Abreviews	Notes
WB		1/1000. Detects a band of approximately 70 kDa (predicted molecular weight: 70 kDa).

Target

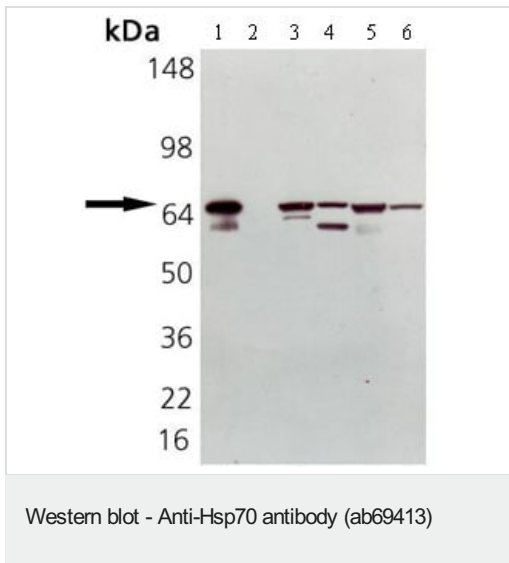
Relevance

Function: In cooperation with other chaperones, the Hsp70 family stabilize preexistent proteins against aggregation and mediate the folding of newly translated polypeptides in the cytosol as well as within organelles. These chaperones participate in all these processes through their ability to recognize nonnative conformations of other proteins. They bind extended peptide segments with a net hydrophobic character exposed by polypeptides during translation and membrane translocation, or following stress-induced damage. In case of rotavirus A infection, serves as a post-attachment receptor for the virus to facilitate entry into the cell. Tissue specificity: HSPA1B is testis-specific.

Cellular localization

Cytoplasm. Localized in cytoplasmic mRNP granules containing untranslated mRNAs.

Images



All lanes : Anti-Hsp70 antibody (ab69413) at 1/1000 dilution

- Lane 1 :** Hsp70 recombinant human protein
- Lane 2 :** Hsc70 recombinant bovine protein
- Lane 3 :** Cell lysates prepared from heat shock treated Hela cells
- Lane 4 :** Cell lysates prepared from heat shock treated PC-12 cells
- Lane 5 :** Cell lysates prepared from heat shock treated Vero cells
- Lane 6 :** Cell lysates prepared from heat shock treated CHO-K1 cells

Predicted band size: 70 kDa

Please note: All products are "FOR RESEARCH USE ONLY. NOT FOR USE IN DIAGNOSTIC PROCEDURES"

Our Abpromise to you: Quality guaranteed and expert technical support

- Replacement or refund for products not performing as stated on the datasheet
- Valid for 12 months from date of delivery
- Response to your inquiry within 24 hours
- We provide support in Chinese, English, French, German, Japanese and Spanish
- Extensive multi-media technical resources to help you
- We investigate all quality concerns to ensure our products perform to the highest standards

If the product does not perform as described on this datasheet, we will offer a refund or replacement. For full details of the Abpromise, please visit <https://www.abcam.com/abpromise> or contact our technical team.

Terms and conditions

- Guarantee only valid for products bought direct from Abcam or one of our authorized distributors