


## Product datasheet

# Anti-Hsp90 beta (phospho S226) antibody ab63562

★☆☆☆☆ [2 Abreviews](#) [1 References](#) [2 Images](#)

### Overview

---

<b>Product name</b>	Anti-Hsp90 beta (phospho S226) antibody
<b>Description</b>	Rabbit polyclonal to Hsp90 beta (phospho S226)
<b>Host species</b>	Rabbit
<b>Tested applications</b>	<b>Suitable for:</b> WB, ICC/IF
<b>Species reactivity</b>	<b>Reacts with:</b> Mouse, Human <b>Predicted to work with:</b> Rat 
<b>Immunogen</b>	Synthetic peptide corresponding to Human Hsp90 beta (phospho S226). Database link: <a href="#">P08238</a>
<b>Positive control</b>	NIH/3T3 cells.
<b>General notes</b>	<p>The Life Science industry has been in the grips of a reproducibility crisis for a number of years. Abcam is leading the way in addressing this with our range of recombinant monoclonal antibodies and knockout edited cell lines for gold-standard validation. Please check that this product meets your needs before purchasing.</p> <p>If you have any questions, special requirements or concerns, please send us an inquiry and/or contact our Support team ahead of purchase. Recommended alternatives for this product can be found below, along with publications, customer reviews and Q&amp;As</p>

### Properties

---

<b>Form</b>	Liquid
<b>Storage instructions</b>	Shipped at 4°C. Store at -20°C. Stable for 12 months at -20°C.
<b>Storage buffer</b>	pH: 7.40 Preservative: 0.02% Sodium azide Constituents: PBS, 50% Glycerol (glycerin, glycerine), 0.87% Sodium chloride  Without Mg <sup>2+</sup> and Ca <sup>2+</sup>
<b>Purity</b>	Immunogen affinity purified
<b>Purification notes</b>	Purified from rabbit antiserum by affinity chromatography using epitope specific phosphopeptide. The antibody against non-phosphopeptide was removed by chromatography using non-phosphopeptide corresponding to the phosphorylation site.
<b>Clonality</b>	Polyclonal

Isotype

IgG

## Applications

### The Abpromise guarantee

Our **Abpromise guarantee** covers the use of ab63562 in the following tested applications.

The application notes include recommended starting dilutions; optimal dilutions/concentrations should be determined by the end user.

Application	Abreviews	Notes
WB	★☆☆☆☆ (2)	1/500 - 1/1000. Detects a band of approximately 83 kDa (predicted molecular weight: 83 kDa).
ICC/IF		1/500 - 1/1000.

## Target

### Function

Molecular chaperone that promotes the maturation, structural maintenance and proper regulation of specific target proteins involved for instance in cell cycle control and signal transduction. Undergoes a functional cycle that is linked to its ATPase activity. This cycle probably induces conformational changes in the client proteins, thereby causing their activation. Interacts dynamically with various co-chaperones that modulate its substrate recognition, ATPase cycle and chaperone function.

### Sequence similarities

Belongs to the heat shock protein 90 family.

### Domain

The TPR repeat-binding motif mediates interaction with TPR repeat-containing proteins.

### Post-translational modifications

Ubiquitinated in the presence of STUB1-UBE2D1 complex (in vitro).

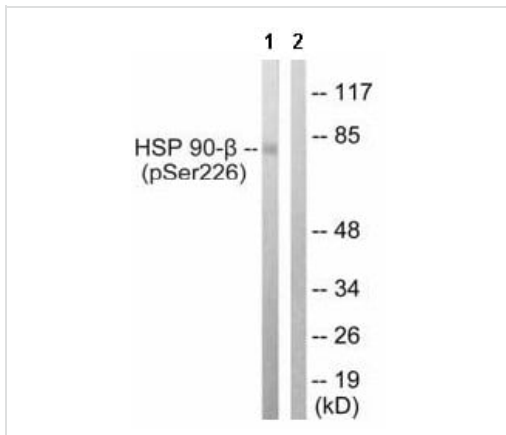
ISGylated.

S-nitrosylated; negatively regulates the ATPase activity.

### Cellular localization

Cytoplasm. Melanosome. Identified by mass spectrometry in melanosome fractions from stage I to stage IV.

## Images



Western blot - Anti-Hsp90 beta (phospho S226) antibody (ab63562)

**All lanes :** Anti-Hsp90 beta (phospho S226) antibody (ab63562) at 1/500 dilution

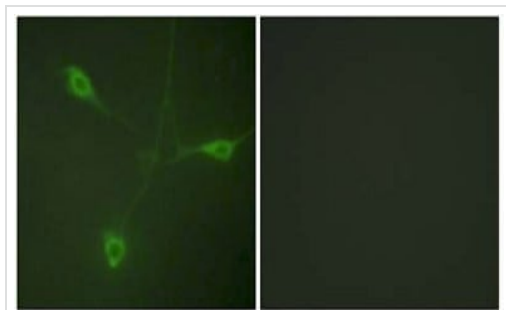
**Lane 1 :** extracts from A549 cells, treated with serum (20%, 15mins)

**Lane 2 :** extracts from A549 cells, treated with serum (20%, 15mins) with immunizing phosphopeptide at 10 µg

Lysates/proteins at 30 µg per lane.

**Predicted band size:** 83 kDa

**Observed band size:** 83 kDa



Immunocytochemistry/ Immunofluorescence - Anti-Hsp90 beta (phospho S226) antibody (ab63562)

ab63562 at 1/500 dilution staining NIH/3T3 cells, without (left) and with (right) immunizing peptide.

**Please note:** All products are "FOR RESEARCH USE ONLY. NOT FOR USE IN DIAGNOSTIC PROCEDURES"

### Our Abpromise to you: Quality guaranteed and expert technical support

- Replacement or refund for products not performing as stated on the datasheet
- Valid for 12 months from date of delivery
- Response to your inquiry within 24 hours
- We provide support in Chinese, English, French, German, Japanese and Spanish
- Extensive multi-media technical resources to help you
- We investigate all quality concerns to ensure our products perform to the highest standards

If the product does not perform as described on this datasheet, we will offer a refund or replacement. For full details of the Abpromise, please visit <https://www.abcam.com/abpromise> or contact our technical team.

### Terms and conditions

- Guarantee only valid for products bought direct from Abcam or one of our authorized distributors